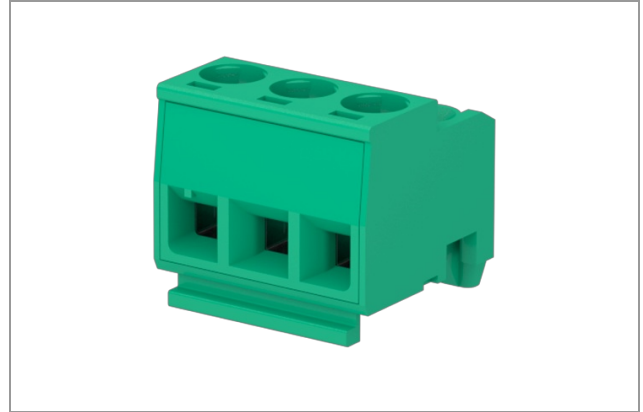


CSF020S1 - Plug

Number of poles: 2, Clamp tightening, 11A, 2.5mm², 14AWG, 300V, Pitch 5 mm, A, Wiring mode Straight, Green (RAL 6032), Soldering technology Not applicable, UL, VDE, IMQ, CUL



Number of poles:	2
Number of levels:	1
Sides configuration:	Side stackable
Pitch:	5 mm
Voltage:	300 V
Current :	11 A
Wire section:	0.05 ÷ 2.5 mm ² / 30 ÷ 14 AWG
Available approvals:	UL, VDE, IMQ, CUL

General Data

Features

Screw dimension	M3
Stripping length	6 mm
Operating temperature range	-40°C ÷ 120°C
Contact resistance	<15 mOhm
Insulation resistance	>1 GOhm

Certifications

VDE (n.40013401 Reg.-Nr.124817)

Rated voltage	250 V
Nominal current	10 A
Wire section	1.5 mm ²
Insulating category	I

UL (n.E167473)

Rated voltage	300 V
Nominal current	10 A
Wire section	14 AWG

IMQ (n.EE099)

Rated voltage	300 V		
Nominal current	11 A		
Wire section	2.5 mm ²		
Insulating category	I		
Overvoltage category/Pollution degree	III/3	III/2	II/2
Impulse voltage	4kV	4kV	4kV
Rated voltage	250V	300V	600V
Insulation voltage	250V	320V	630V

CUL (n.E167473)

Rated voltage	300 V
Nominal current	10 A
Wire section	14 AWG

Materials

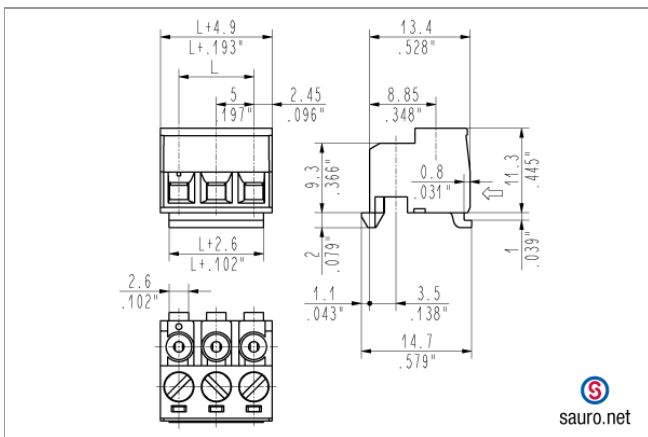
Components

Screw material	Nickel-plated copper alloy
Spring contact	Tin-plated copper alloy
Clamp tightening	Nickel-plated copper alloy
Insulating housing material	PA Polyamide
Insulating material group	I (CTI >= 600V)

Available colors

green	(similar to RAL 6032)
black	(similar to RAL 9005)
light grey	(similar to RAL 7035)
dark gray	(similar to RAL 7040)
orange	(similar to RAL 2003)
blue	(similar to RAL 5012)
red	(similar to RAL 3017)
another colors	(on demand)

Technical drawing



Derating curve

