

# 10AQS/1SS+AQW

Front panel sealing • variable heights



## DISTINCTIVE FEATURES

Front panel sealing to IP67

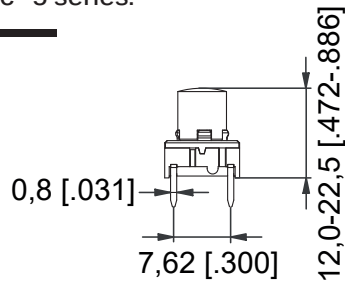
Excellent illumination with 10AQS

Variable total heights

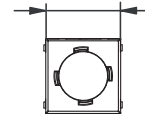


SWITCH SPECIFICATIONS : see Multimec™ 5 series.

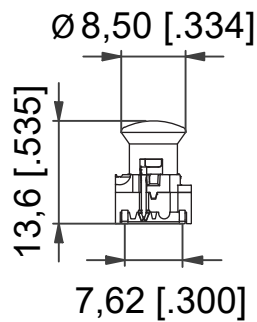
5E+1SS - TH



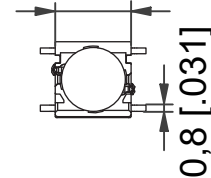
Max 10,3 [.406]



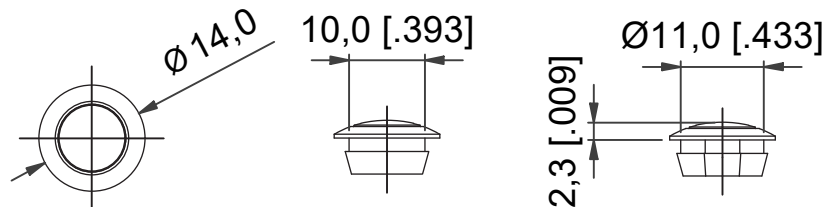
5G+10AQS - SMD W/LED



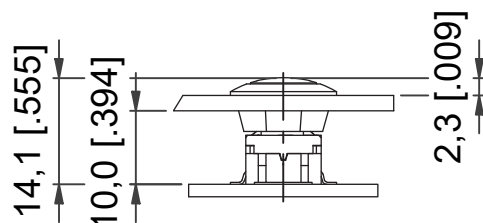
Max 10,3 [.406]



AQW



5G+10AQS+AQW



The company reserves the right to change specifications without notice. All tolerance if not otherwise specified  $\pm 0.2\text{mm}$ .

# 10AQS/1SS+AQW

Front panel sealing • variable heights



## GENERAL SPECIFICATIONS

- Front panel sealing: IP67 to IEC 60529
- Mechanical lifecycle (sealing) : 500,000 activations
- Recommended panel thickness: 2.0 mm



## MATERIALS

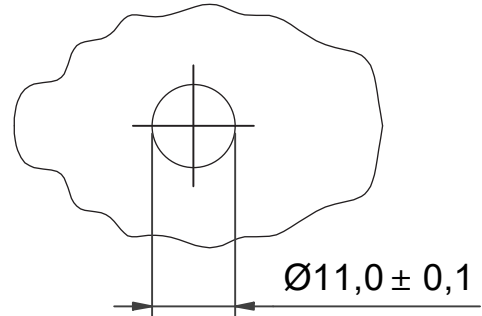
- Sealing: silicone
- 10AQS cap: polycarbonate (PC) UL94H2
- 1SS cap: polyamide UL94V2

### DISCLAIMER:

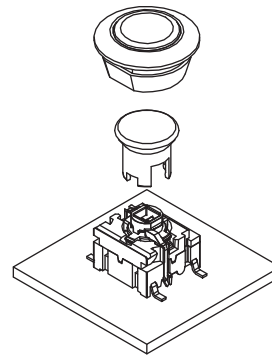
AQW sealing is produced in silicone. This material is not suitable for all industries. Please contact us for a check of chemical resistance for your specific environment.



## PANEL CUT-OUT



## ASSEMBLY



### NOTE:

Lowest behind the panel height possible with this solution is 5E+1SS09-12.0+AQW that has the behind the panel height of 9.0 mm.

# 10AQS/1SS+AQW

Front panel sealing • variable heights



## BUILD YOUR PART NUMBER

**ILLUMINATED**

				<b>10AQS</b>		<b>AQW</b>		
SERIES				CAP	COLOR	SEALING		INNER
<b>5G</b>					<b>16</b> Frosted white		<b>09</b> black	<b>16</b> frosted white
	MOUNTING		LED					
	<b>TH9</b> Through-hole		<b>02</b> blue		<b>82</b> red			
	<b>SH9</b> Surface mount		<b>22</b> green		<b>2242</b> green/yellow			
		ACTUATION FORCE	<b>29</b> high intensity green		<b>8222</b> red/green			
		<b>20</b> 2.0 N	<b>42</b> yellow		<b>8242</b> red/yellow			
		<b>35</b> 3.5 N	<b>61</b> white					
		<b>65</b> 6.5 N						
		<b>20Q</b> 2.0 N quiet						

**NON-ILLUMINATED**

			<b>1SS</b>			<b>AQW</b>		
SERIES	MOUNTING		CAP	COLOR	HEIGHT	SEALING		INNER
<b>5E</b>	<b>TH9</b> Through-hole			<b>09</b> black	<b>12.0</b> 12 mm		<b>09</b> black	<b>02</b> green
	<b>SH9</b> Surface mount				<b>15.0</b> 15 mm			<b>03</b> grey
		ACTUATION FORCE			<b>16.0</b> 16 mm			<b>08</b> red
		<b>20</b> 2.0 N			<b>19.0</b> 19 mm			<b>36</b> signal white
		<b>35</b> 3.5 N			<b>22.5</b> 22.5 mm			
		<b>65</b> 6.5 N						
		<b>20Q</b> 2.0 N quiet						



## ABOUT THIS SERIES

- ⚠ **Notice :** If an application requires both non-illuminated and illuminated AQW solution, 10AQS cap can be used for both to ensure the same behind the panel height.
- ⚠ **Notice :** Switches, caps and sealings are ordered separately.