



PULSANTI ANTIVANDALO LUMINOSI Ø 19

Ø 19 Illuminated vandal resistant switches | *Poussoirs antivandales lumineux Ø 19*

Corrente 50 mA	Current 50 mA	Courant 50 mA
Tensione 24 Vdc	Voltage 24 Vdc	Tension 24 Vdc
Led 20 mA	Led 20 mA	Led 20 mA
Corpo Acciaio inox	Body Stainless steel	Corps Acier inox
Tasto Acciaio inox	Actuator Stainless steel	Bouton Acier inox
Contatti Ottone argentato	Contacts Silver plated brass	Contacts Laiton argenté
Grado di protezione IP 66	Sealing IP 66	Indice de protection IP 66
Protezione TVS	Protection TVS	Protection TVS



Codice vite	Codice saldare	Codice cavetti	Colore led	Tensione Led
Screw code Code - à vis	Solder code Code - à souder	Flying leads code Code - à fils	Led colour Couleur led	Led Voltage Tension Led

Senza resistenza No resistor Sans résistance				
MP0001.T.RD	MP0001.S.RD	MP0001.FL.RD	■	1,85 V
MP0001.T.GR	MP0001.S.GR	MP0001.FL.GR	■	3,50 V
MP0001.T.AM	MP0001.S.AM	MP0001.FL.AM	■	2,30 V
MP0001.T.BL	MP0001.S.BL	MP0001.FL.BL	■	3,50 V
MP0001.T.WH	MP0001.S.WH	MP0001.FL.WH	□	3,60 V
Con resistenza With resistor Avec résistance				
MP0001.T.RD.6	MP0001.S.RD.6	MP0001.FL.RD.6	■	6 V
MP0001.T.GR.6	MP0001.S.GR.6	MP0001.FL.GR.6	■	6 V
MP0001.T.AM.6	MP0001.S.AM.6	MP0001.FL.AM.6	■	6 V
MP0001.T.BL.6	MP0001.S.BL.6	MP0001.FL.BL.6	■	6 V
MP0001.T.WH.6	MP0001.S.WH.6	MP0001.FL.WH.6	□	6 V
MP0001.T.RD.12	MP0001.S.RD.12	MP0001.FL.RD.12	■	12 V
MP0001.T.GR.12	MP0001.S.GR.12	MP0001.FL.GR.12	■	12 V
MP0001.T.AM.12	MP0001.S.AM.12	MP0001.FL.AM.12	■	12 V
MP0001.T.BL.12	MP0001.S.BL.12	MP0001.FL.BL.12	■	12 V
MP0001.T.WH.12	MP0001.S.WH.12	MP0001.FL.WH.12	□	12 V
MP0001.T.RD.24	MP0001.S.RD.24	MP0001.FL.RD.24	■	24 V
MP0001.T.GR.24	MP0001.S.GR.24	MP0001.FL.GR.24	■	24 V
MP0001.T.AM.24	MP0001.S.AM.24	MP0001.FL.AM.24	■	24 V
MP0001.T.BL.24	MP0001.S.BL.24	MP0001.FL.BL.24	■	24 V
MP0001.T.WH.24	MP0001.S.WH.24	MP0001.FL.WH.24	□	24 V



PULSANTI ANTIVANDALO LUMINOSI Ø 19

Ø 19 Illuminated vandal resistant switches | *Poussoirs antivandales lumineux Ø 19*

Corrente 50 mA	Current 50 mA	Courant 50 mA
Tensione 24 Vdc	Voltage 24 Vdc	Tension 24 Vdc
Led 20 mA	Led 20 mA	Led 20 mA
Corpo Acciaio inox	Body Stainless steel	Corps Acier inox
Tasto Acciaio inox	Actuator Stainless steel	Bouton Acier inox
Contatti Ottone argentato	Contacts Silver plated brass	Contacts Laiton argenté
Grado di protezione IP 66	Sealing IP 66	Indice de protection IP 66
Protezione TVS	Protection TVS	Protection TVS

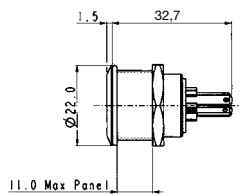


Codice vite	Codice saldare	Codice cavetti	Colore led	Tensione Led
Screw code Code - à vis	Solder code Code - à souder	Flying leads code Code - à fils	Led colour Couleur led	Led Voltage Tension Led

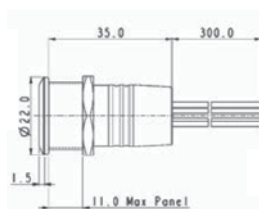
Senza resistenza No resistor Sans résistance				
MP0002.T.RD	MP0002.S.RD	MP0002.FL.RD	■	1,85 V
MP0002.T.GR	MP0002.S.GR	MP0002.FL.GR	■	3,50 V
MP0002.T.AM	MP0002.S.AM	MP0002.FL.AM	■	2,30 V
MP0002.T.BL	MP0002.S.BL	MP0002.FL.BL	■	3,50 V
MP0002.T.WH	MP0002.S.WH	MP0002.FL.WH	□	3,60 V
Con resistenza With resistor Avec résistance				
MP0002.T.RD.6	MP0002.S.RD.6	MP0002.FL.RD.6	■	6 V
MP0002.T.GR.6	MP0002.S.GR.6	MP0002.FL.GR.6	■	6 V
MP0002.T.AM.6	MP0002.S.AM.6	MP0002.FL.AM.6	■	6 V
MP0002.T.BL.6	MP0002.S.BL.6	MP0002.FL.BL.6	■	6 V
MP0002.T.WH.6	MP0002.S.WH.6	MP0002.FL.WH.6	□	6 V
MP0002.T.RD.12	MP0002.S.RD.12	MP0002.FL.RD.12	■	12 V
MP0002.T.GR.12	MP0002.S.GR.12	MP0002.FL.GR.12	■	12 V
MP0002.T.AM.12	MP0002.S.AM.12	MP0002.FL.AM.12	■	12 V
MP0002.T.BL.12	MP0002.S.BL.12	MP0002.FL.BL.12	■	12 V
MP0002.T.WH.12	MP0002.S.WH.12	MP0002.FL.WH.12	□	12 V
MP0002.T.RD.24	MP0002.S.RD.24	MP0002.FL.RD.24	■	24 V
MP0002.T.GR.24	MP0002.S.GR.24	MP0002.FL.GR.24	■	24 V
MP0002.T.AM.24	MP0002.S.AM.24	MP0002.FL.AM.24	■	24 V
MP0002.T.BL.24	MP0002.S.BL.24	MP0002.FL.BL.24	■	24 V
MP0002.T.WH.24	MP0002.S.WH.24	MP0002.FL.WH.24	□	24 V

Dimensioni | Dimensions | Dimensions

Contatti a saldare | Solder contact | Contacts à souder



Cavetti | Flying leads | Fils



Contatti a vite | Screw contact | Contacts à vis

