



POSEIDON[®] Asistent

CONFIGURATION AND MANAGEMENT SOFTWARE FOR LIGHTING SYSTEMS

USER MANUAL version 1.6.3.



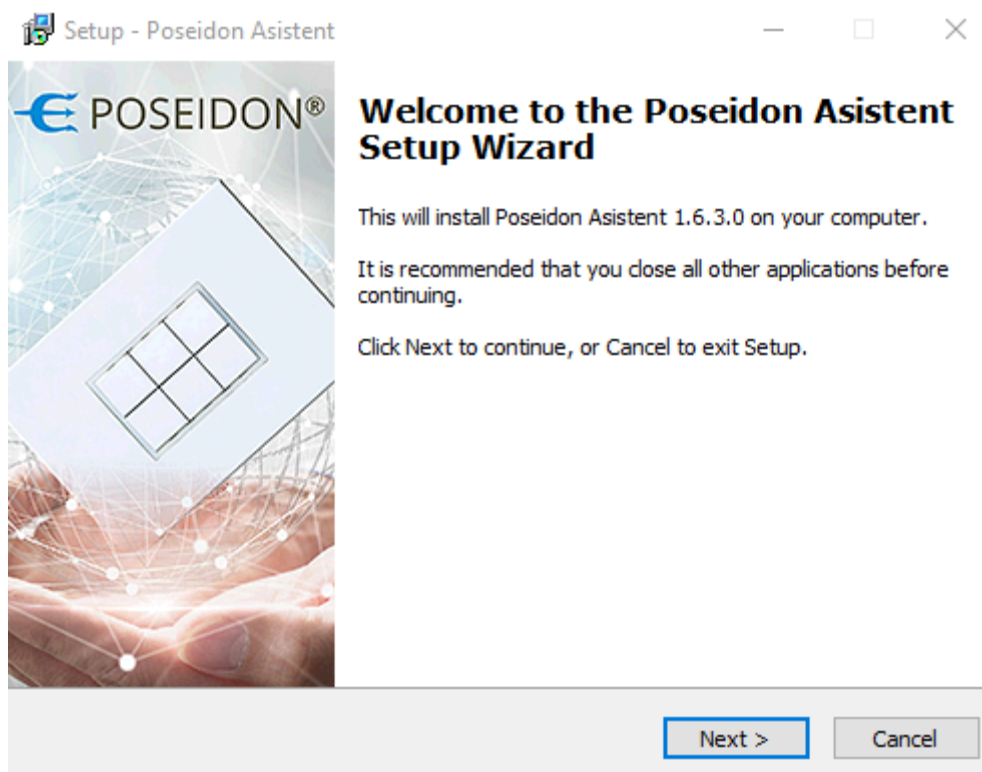
The Poseidon® Asistent software provides an easy and structured environment for configuration of all elements of Poseidon® wireless control system. The Poseidon® Asistent software provides also a user-friendly access to functions which are not directly accessible via the programming button on the devices. It allows easy creation and editing of links between transmitters, receivers and sensors. The configuration workload particularly for larger installations is significantly reduced by multiple criteria sorting and by user friendly interface.

CONTENTS

1	Installation.....	4
1.1	Language settings	4
2	Description of the main menu	5
2.1	File	5
2.2	Project.....	5
2.3	Communication	6
2.4	Help.....	6
3	Communication settings	7
4	Project settings	9
4.1	Setting of project structure	9
4.2	Project information	9
4.3	Setting of groups.....	10
5	Device search and creation of projects	11
5.1	Search – Identification of receivers	11
5.2	Search – Identification of transmitters.....	12
5.3	Search for receivers around another device than the connected RF interface	13
5.4	Inserting devices into project	13
5.5	Info Screen.....	14
6	Meaning and function of icons above columns with devices	16
6.1	Status and settings of devices	16
6.2	Location	16
6.2.1	Location settings tab.....	17
6.3	Filter.....	17
6.4	Device grouping.....	18
6.5	Search	18
6.6	Listening to transmitters	18
6.6.1	Search for a transmitter in the left tree using an INI message.....	18
6.6.2	Transmitter state monitoring	19
6.6.3	Searching and adding new transmitters to a project	19
7	Links.....	20
7.1	Creation of new link.....	21
7.2	Change link settings.....	21
7.3	Cancelling the link.....	21
7.4	Basic links functions.....	22
7.4.1	Advanced functions	22
7.5	Pairing link P8 TR 2 C/U DIN	23
7.6	Copying possibilities	24
7.6.1	Copy links for multiple transmitters.....	24
7.6.2	Copy links for multiple receivers	25
7.6.3	Replacing links in a receiver with links from another receiver of the same type.....	26
7.6.4	Copy receiver channel settings.....	26
7.6.5	Other possibilities and creation of special links	26
7.7	Setting priorities	27
7.8	Editing the transmission route	27
7.9	Repeater function.....	28
7.9.1	Creating a repeater link	28
7.9.2	Repeater settings in the device	28
7.10	Keyboard shortcut support.....	29
8	Changing the device settings.....	29
8.1	Write changes to the device	29
8.2	Device password.....	30
9	RF Range.....	30
10	Virtual devices.....	31
11	Technical support and software updates	36

1 Installation

Run the installation file **Poseidon_X_setup.exe** (X means version number) to open the Setup wizard window. Press **NEXT** to go through individual setup dialogues as in the standard setup of software under Windows. It is possible to change the target folder for installation of the software and the folder for the application shortcut, and to choose whether to use the desktop shortcut or not.



Minimum requirements (HW):

- Win XP or higher
- Free USB port
- 50 MB HDD free space
- 32-bit (x86) or 64-bit (x64) processor with frequency 1 GHz or higher
- 1 GB RAM (32-bit system) or 2 GB RAM (64-bit system)
- DirectX 9 graphic device with WDDM 1.0 driver or higher

1.1 Language settings

To set the English language of Poseidon® Asistent software click on „**Soubor**“ at the upper left menu, choose „**Nastavení aplikace**“ and from the pop up window select „**EN**“ from the drop down menu and confirm by „**OK**“. After confirming the language settings you need to restart the application.

2 Description of the main menu

2.1 File

New - close the opened file and create a new one.

Open – open an existing file with the extension *.p8c.

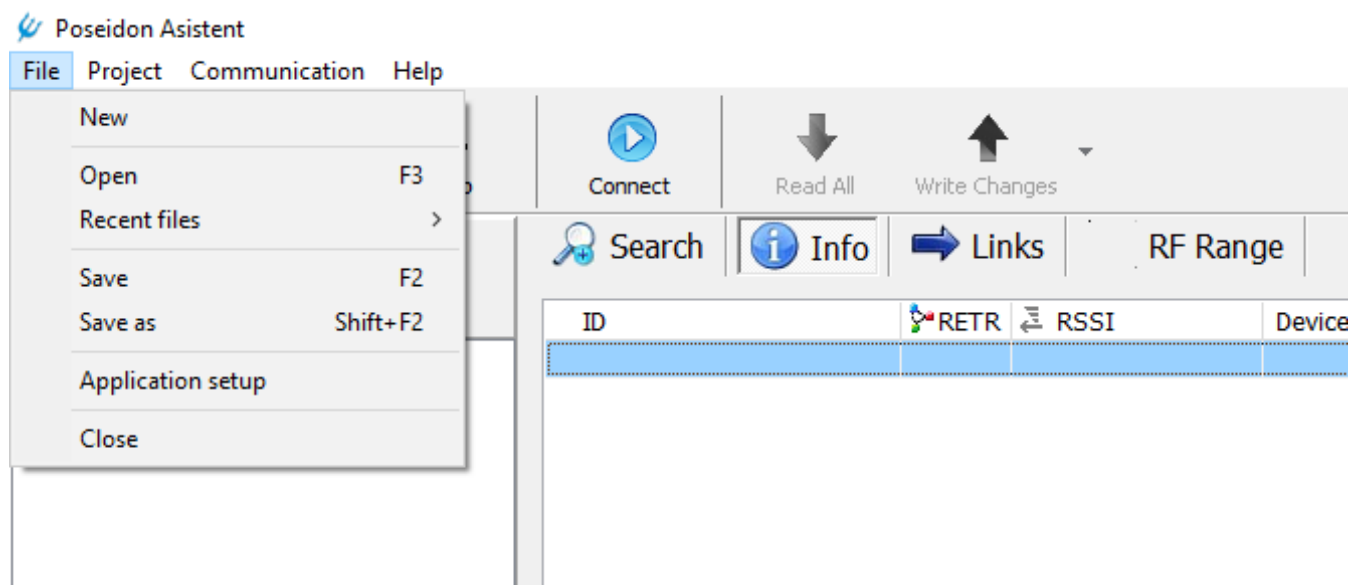
Recent files - displays the history of open projects and allows them to be opened.

Save – save data in a file. If no file name has been set, the Save as dialogue will appear.

Save as – open the dialogue to set a file name and its location and to save data in this file.

Application setup – open the dialogue to change the software language version and to set a service password.

Close – close the application.

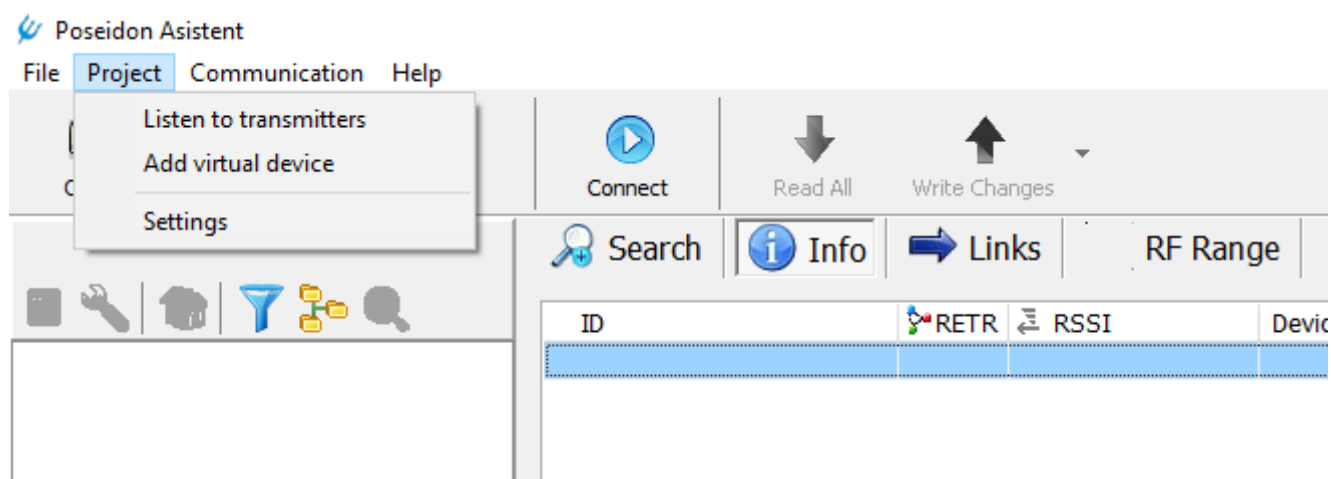


2.2 Project

Listen to transmitters – open a window for listening to messages with the status of transmitters.

Add virtual device – open a window for adding virtual devices to the project.

Settings – open the dialogue to make project settings. It is possible to enter a project name and create groups and subgroups of Poseidon components for later sorting according to the location or function.



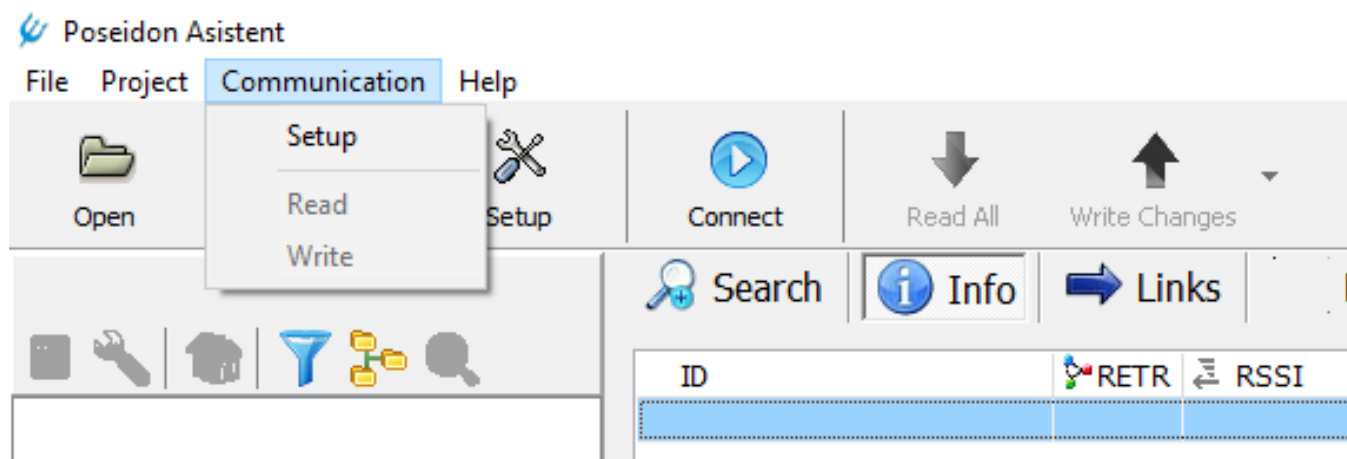
2.3 Communication

This tab contains functions to set the actual communication between the PC and the USB transmitter to transfer data between the PC and the Poseidon devices for setting and configuration.

Setup – open the dialogue to establish a connection between interface (P8 TR USB, P8 TR IP or P8 GWA DIN) and the PC. After the connection has been established, this option is no longer available.

Read – current set up of the devices in the opened project will be read and displayed in the Poseidon® Asistent software in the PC. This command is equal to click on the green arrow (“Read All”).

Write – the changes made in the Poseidon® Asistent software will be saved to the devices. This command is equal to click on the red arrow (“Write changes”).



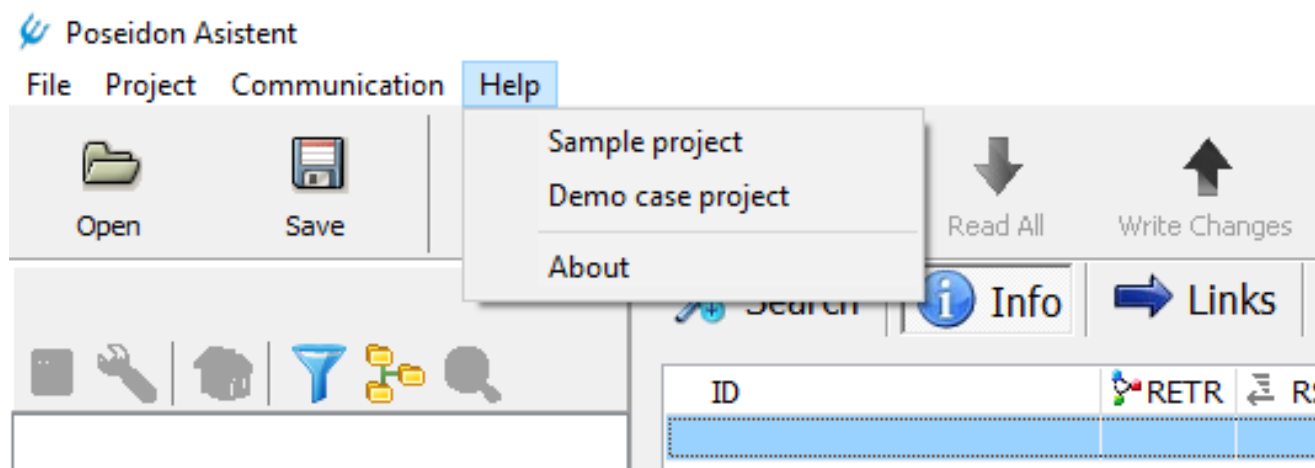
2.4 Help

Introduces the program features, describes the functions and contains the sample project.

Sample project – includes a sample Poseidon® file (.p8c) with the initial settings of the Poseidon components. It is possible to program the features of the Poseidon® components in an off-line mode. The sample project is not possible to use in real installation. For this purpose, it is also possible to create your own project using virtual elements (see chapter 10).

Demo case project - open a file in which devices from the POSEIDON® system are inserted, which includes a so-called demo case. It is intended only for testing the program environment off-line (without any components).

About – provides information about the actual version of the program, link to the website of the Poseidon® system and contacts for e-mail communication with company ENIKA.CZ.

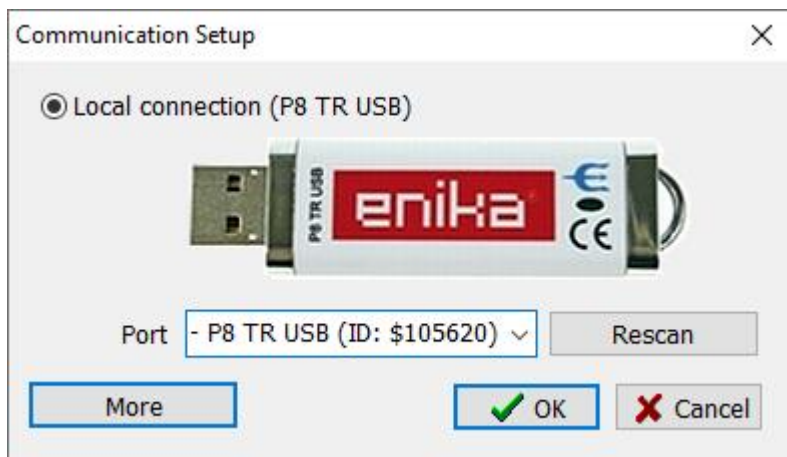


3 Communication settings

To access the tools for communication (configuration) with the RF elements of the Poseidon® system, you must first set up the connection between the radio interface (P8 TR USB, P8 TR IP or P8 GWA DIN) and the PC.

Go to: Main menu – Communication – Setup

Communication via Local Connection

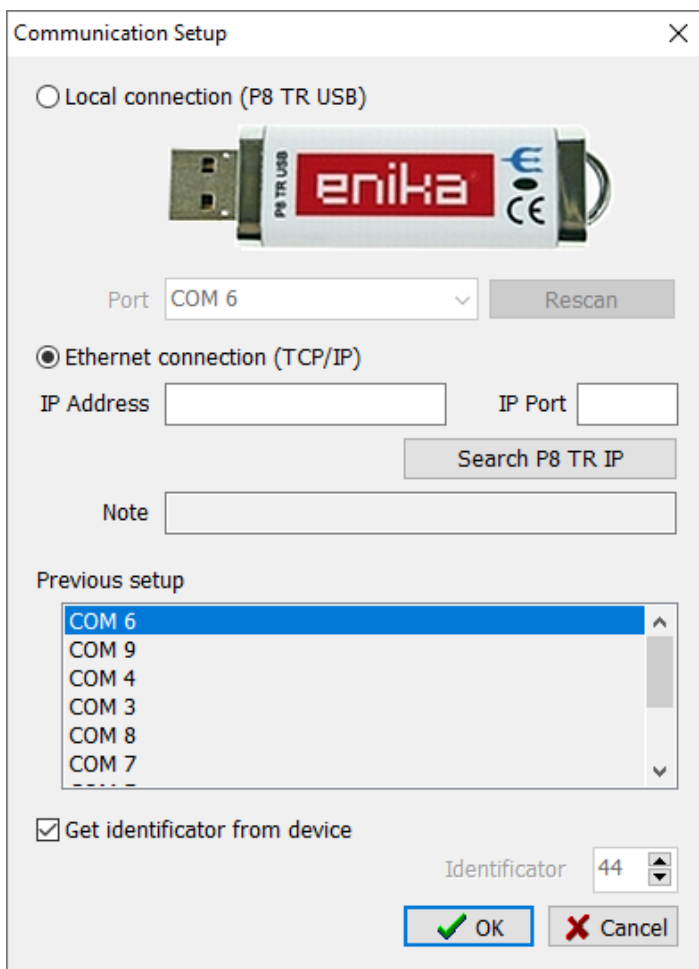


Local connection – access the wireless configuration using the P8 TR USB inserted into the computer's USB port.

Port – number of the computer's port where the USB transmitter is inserted. Press Rescan to read all the USB transmitters connected to the computer, including their ID and port number.

More button is used to connect and configure the Poseidon devices via the ethernet interface P8 TR IP or P8 GWA DIN.

Communication via Ethernet connection



Insert the IP Address and IP port data of the required device.

Search P8 TR IP is for searching the ethernet network and finding all connected interfaces of the Poseidon® system, including their IP Address.

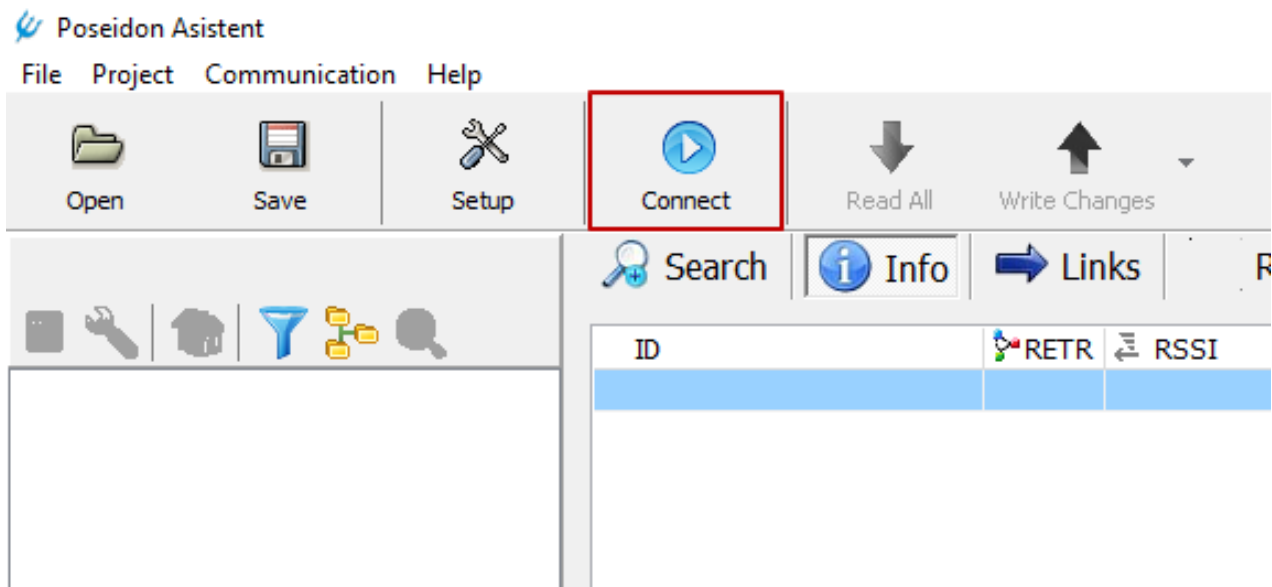
Previous setup displays the list of COM Ports and IP addresses recently used for configuration.

Get the identification from device – the device identifier is changed in case the configuration is done using more devices for configuration.

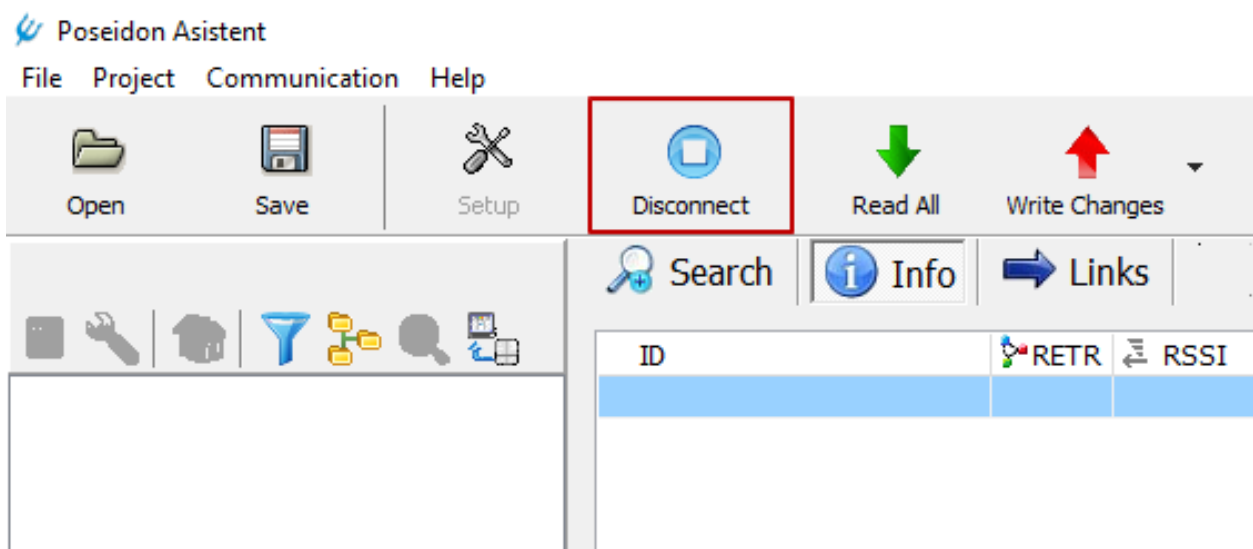
Note: When using the Poseidon ethernet interface P8 TR IP or P8 GWA DIN for configuration of the Poseidon installation, the ethernet communication (sending and receiving information) with the superior building automation system is deactivated!

Therefore, the connection is recommended only for the time necessary to write configuration changes or read the current data.

To activate the communication via radio interface (P8 TR USB, P8 TR IP, P8 GWA DIN) press the "**Connect**" button.



Activation and correct communication is indicated by the change of the blue connection button with the white stop button in the middle. When the connection is established the green (Read All) and red (Write Changes) arrows are activated.



To disconnect simply click on the blue "**Disconnect**" stop button.

4 Project settings

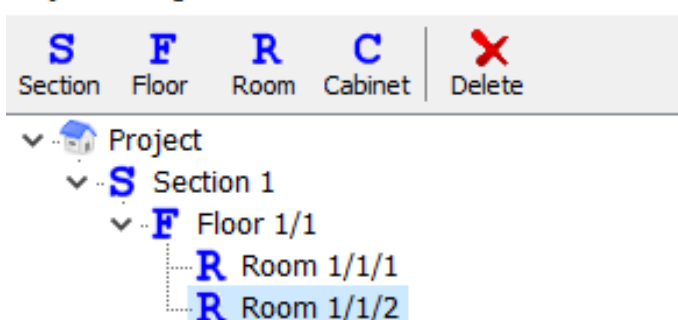
Name, description, owner, versions can be set for each project. In addition, the necessary number of sections and optional groups of devices can be created and appropriately named within the object/project according to the location or function. Listed devices will later be sorted in these groups, which will provide an easy navigation and search for devices, especially in larger installations.

Go to: Main menu – Project – Settings

4.1 Setting of project structure

Location - use the **S F R C** buttons in the left part of the window to create the structure of large projects.

Project settings

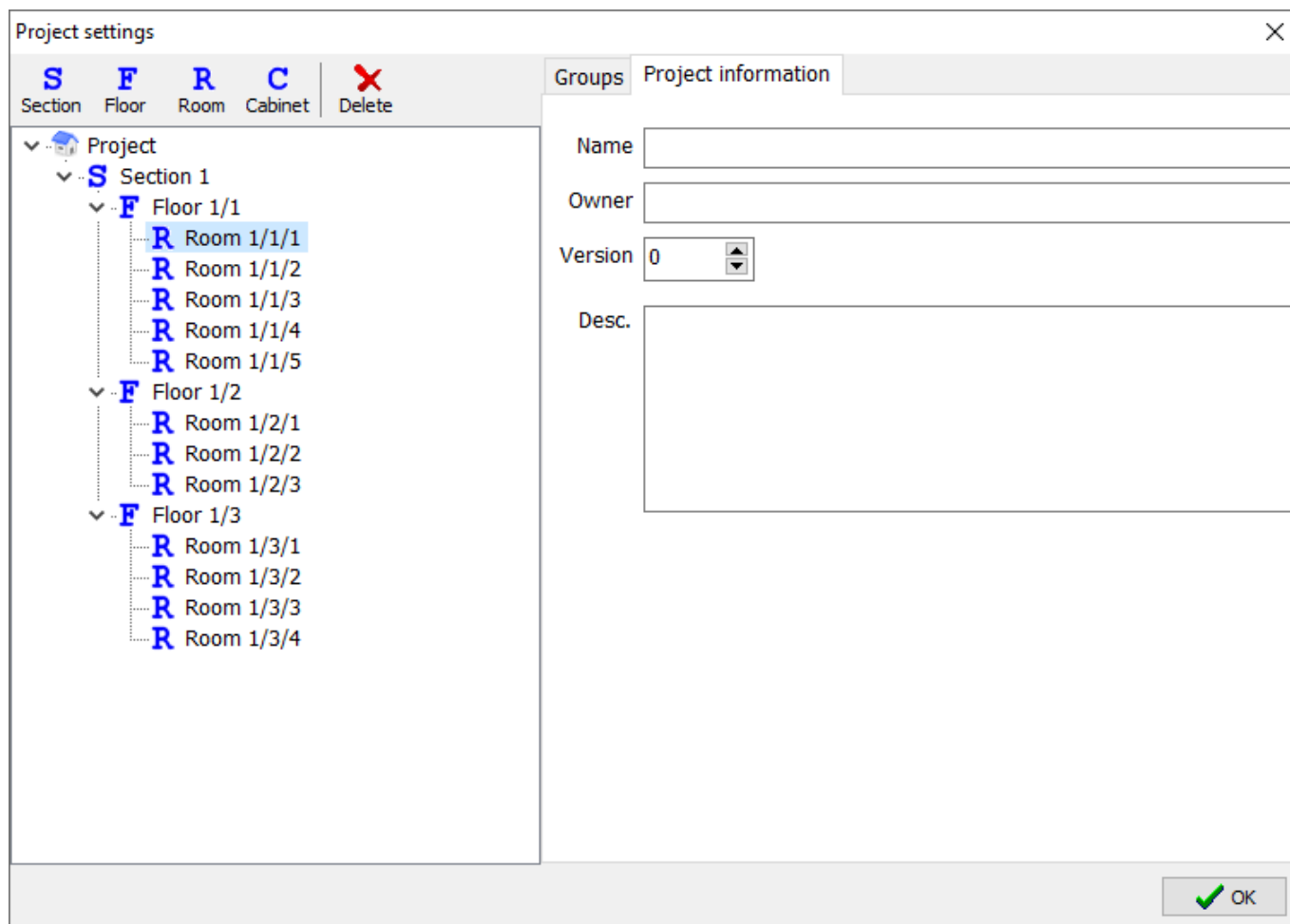


- Buttons:**
- S** Section – add another section (building)
 - F** Floor – add a floor in the selected building
 - R** Room – add a room in the selected floor
 - C** Cabinet – add a cabinet/switchboard in the selected floor
 - X** Delete – remove the selected item

After the project structure is defined the Poseidon devices can be sorted according to it. Individual parts of the project structure can be renamed by clicking on the selected line.

4.2 Project information

In the Project information tab, you can enter Name, owner's name, version number and brief description.



4.3 Setting of groups

A number of groups necessary to sort devices according to type, purpose and function will be created in the **Groups** tab.

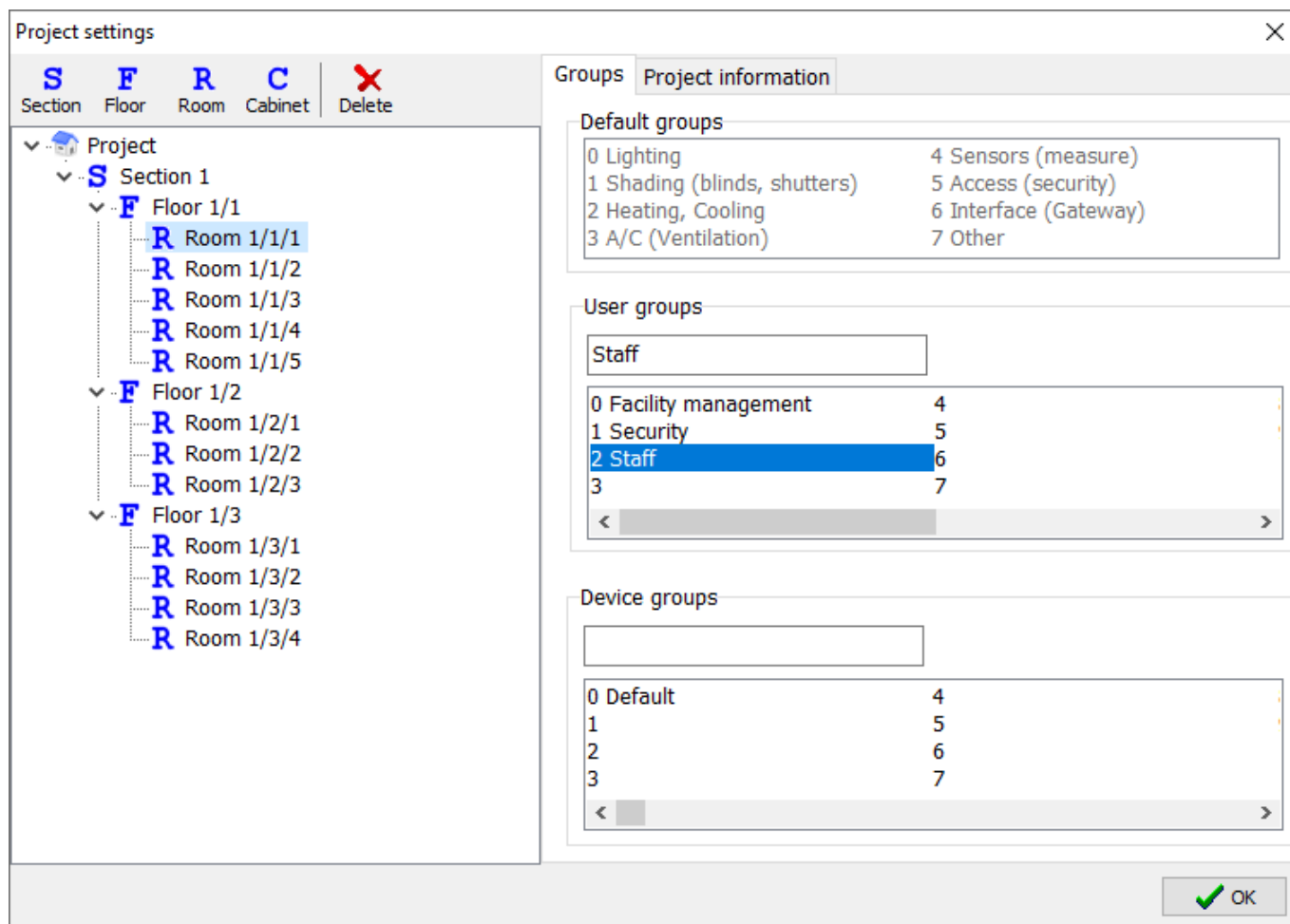
Available groups:

Default groups – 8 predefined groups

User groups – 16 groups defined by user


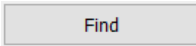
Device groups – 256 groups defined by user. It can be used e.g. to group devices in the same building or in one project file. The device group number is displayed at the time of the search and thus it is possible to distinguish already set devices from newly installed ones.

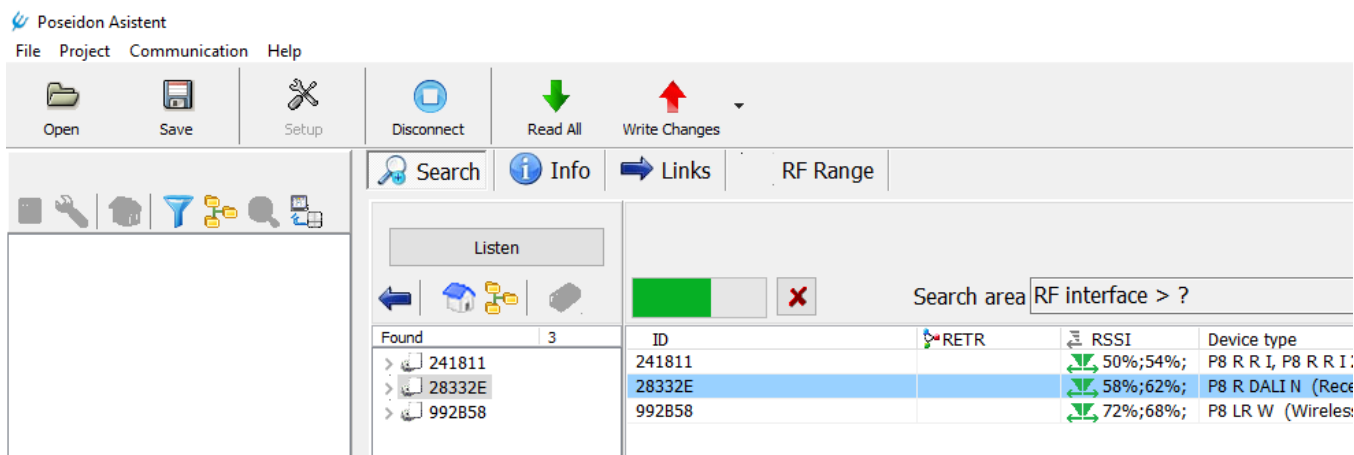
Note: After changing the name of a folder or a group, simply click on the outside space of the entry box to save the changes. If you confirm by ENTER – this will close the window without saving changes.







5 Device search and creation of projects

5.1 Search – Identification of receivers


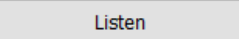
In the main window first select the  Search mode, then click on the  button to list all devices (receivers) which are within the range and for which the search mode is active. The factory setting of each Poseidon device which is powered from the mains enables to identify it during the first 5 minutes after the power is on. If you exceeded this time switch off and on the power supply and repeat the search process. The mode can be changed in the card of the respective receiver. You can choose between "Temporarily visible", "Permanently visible" and "Invisible" modes. In the Found column, each identified device will be visible with its unique ID number, description (name) and level of the connection quality with the USB transmitter or ethernet interface.

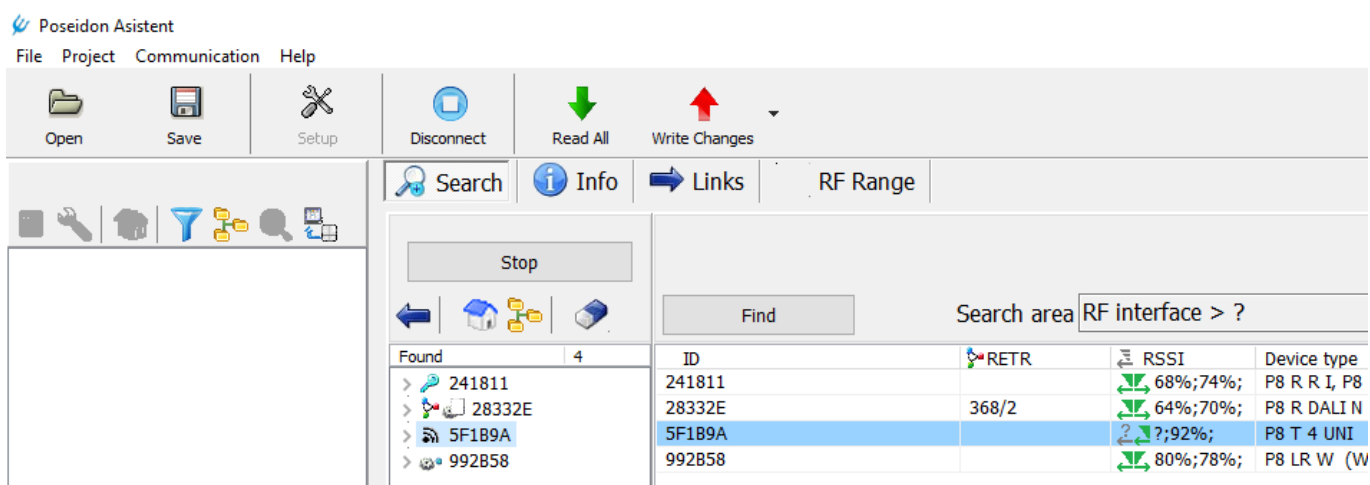


The list of found devices is supplemented by tool buttons:







-  Button for inserting the selected device into the project (can also be done by dragging the device to the left project tree). If the button is pressed during the search, the search is interrupted and the device is inserted into the project.
-  Distribution of found devices into branches according to the assigned value of the device group.
-  Distribution of found devices into branches according to the type name of the device.
-  Button for clearing the list of found devices.

5.2 Search – Identification of transmitters

In the main window first select the  Search mode, then click on the  Listen button to search for all active transmitters within the range. Each transmitter must be activated by broadcasting the initialization code which is sent by short double press of any button on the transmitter. The identified transmitter will appear in the Found column together with the identified receivers. Click on Stop to cancel the transmitters search mode.



Icons are used in the list of found devices to indicate the properties of the found devices:

-  Transmitter device (does not support remote management).
-  The device has an empty transmitters memory and does not have a set device group (probably a new device).
-  The device has some entries in the memory, it has links but not set a group.
-  The device has some entries in the memory and also has a set device group.
-  The device is password protected.
-  For devices that have the repeater enabled, this second icon is also displayed.

The right part shows the device identification number, group and index information in the case of an active repeater, radio signal strength, device type designation, brief description of the device or device channel, note (additional device information) and the assigned device group.

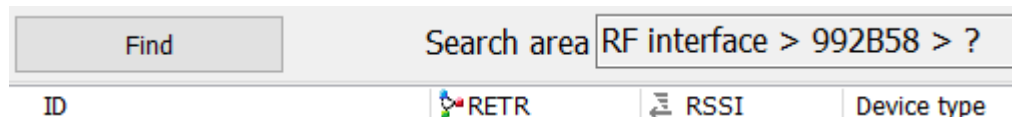
Note

- #PowerON = The device was switched ON within 5 minutes.
- #Empty = The device has an empty memory of transmitters (no links).
- #TheMenuIsActive = The device has an active MENU (someone is currently operating via a programmer button on the device).
- #TheMenuWasActive = The device had an active menu in the last 5 minutes.
- #PasswordProtected = A password for remote management access is set on the machine.

Devices already inserted in the project are not displayed again! During the onsite installation, we recommend entering the ID numbers of individual elements into the project documentation according to their final location in the building! At a later stage, when identifying the Poseidon devices, it will be easier to check that all Poseidon devices were identified (found) and to change their settings if necessary, e.g. in order to ensure better communication between a USB transmitter and a non-identified receiver by moving closer to its location, or check if the wiring and connecting of the devices was done correctly or to check if there is any damage done to the device.


5.3 Search for receivers around another device than the connected RF interface

In the Search area field, there is a path to the device in the vicinity of which we want to search for devices. Can only be used for searching! The Listen tool always works around the RF interface! The route always starts with the connected RF interface. In addition, up to 3 device's ID can be entered to determine the search area around the last device on the route using the route tools. This route is set either via the button next to the route and by entering individual IDs, or you can enter and add IDs (with the SHIFT key) by dragging the device from the left tree of the application.

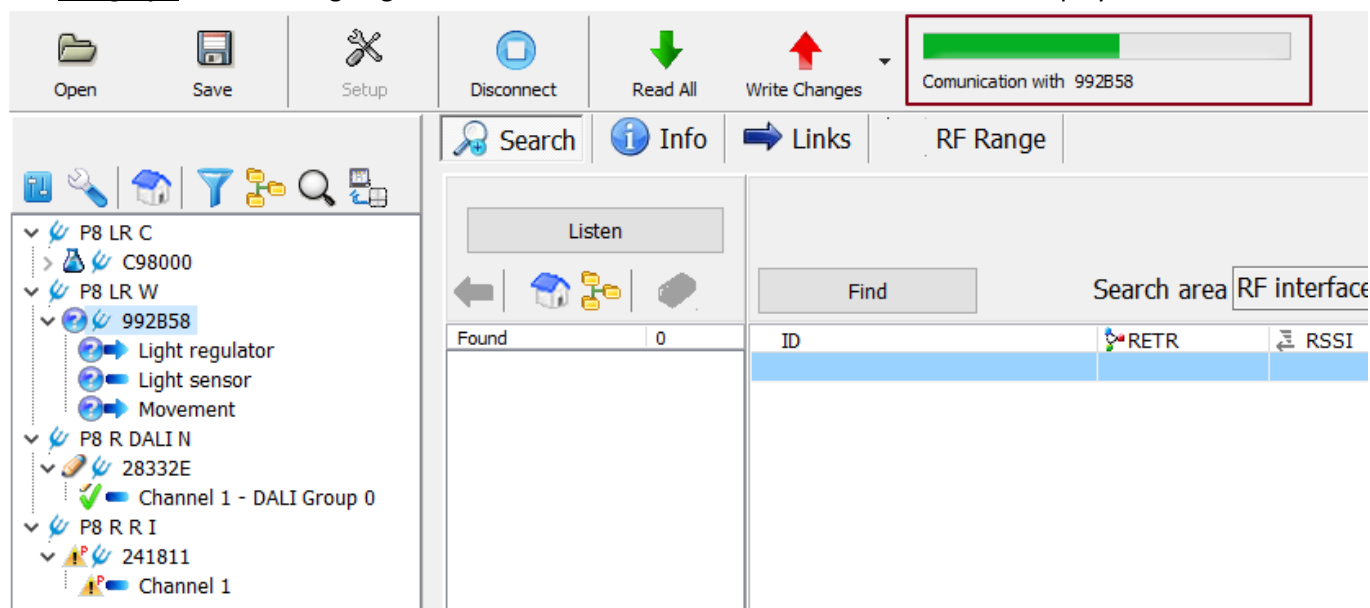


When searching in other zone than around the RF interface, the Info tab (in the RSSI column) mentions where it was found. If a device that has been searched for via a route is inserted into the project, this route is retained for further configuration communication.

5.4 Inserting devices into project

After pressing  button the device is inserted into the project. Another option is to drag the device ID from the Found column to the left column. Before inserting the transmitter, the window for naming and locating the transmitter will automatically pop up.

The **Bar-graph** indicates ongoing communication with the device whose ID number is displayed.



The devices and their channels are displayed by two sets of icons.

The left icon informs about the status of the device:

- Virtual device.
- The device has the same data as in the project or the device is a transmitter type without remote management support.
- Some memory has been changed in the PA and this change is not written to the device.
- Indication for a specific channel for which no change is made, but some unwritten change is made in its device.
- Communication with the device is in progress (read / write), or a request is not completed in the device.
- Communication with the device failed because it is password protected and the PA doesn't know the password.
- Communication with the device failed because it currently has an active menu (programming button pressed).
- Communication with the device failed because no response was received (either the device does not work or is out of RF range).

The right icon distinguishes:

- Active channel that transmits status information to RF (transmitter).
- An active channel that does not have an active (or does not support) broadcast status.

If the icon is grayed out, the channel is switched off or disabled.

5.5 Info Screen

The **Info** tab displays detailed information about all devices inserted (dragged) into the project which can be worked with, including their ID, location, and assignment to a group.

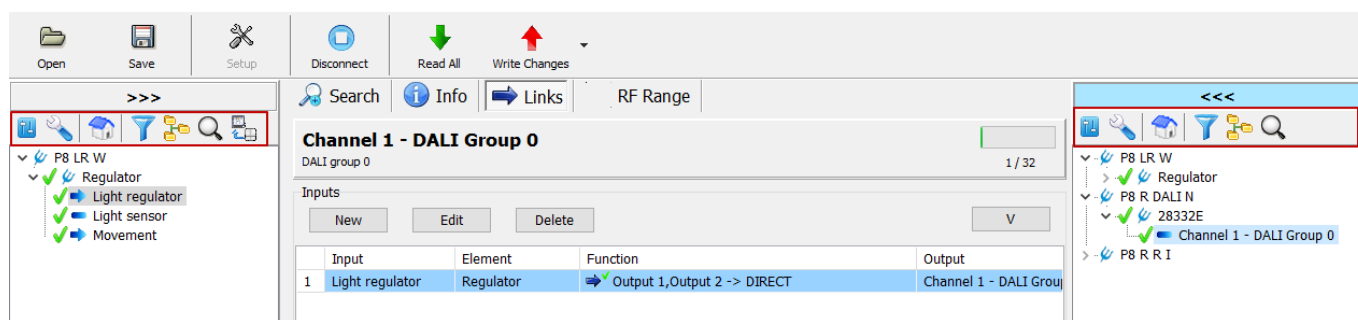
ID	RETR	RSSI	Device type	Description	Note	DG	Section	Floor	Room/Cabinet	Row;Col; Groups
992858		86%;80%;	P8 LR W	Wireless controller with light se		(1)	(2)	(1)		0, 1
99285A				Light regulator		(1)	(2)	(1)		0, 1
992858/1				Light sensor		(1)	(2)	(1)		0, 1
992858				Movement		(1)	(2)	(1)		0, 1
28332E	368/2	52%;54%;	P8 R DALI N	Receiver with DALI output		Default				
28332E/0				DALI group 0		Default				
241811		56%;60%;	P8 R R I, P8 R	Built-in roller control receiver	!! Invalid password!!	Default				
241811/0				Switching outputs for blinds		Default				

- **ID** - device identification number
- **RETR** - group and index information in the case of an active repeater
- **RSSI** - radio signal strength information. Depending on the device type and search method, multiple values are listed:
 - For transmitters, it's the value of the received packet in the RF interface from the transmitter with the ACK request or into RF interface from transmitter with ACK.
 - For devices with remote management, the signal strength received is indicated
 - in the RF interface (e.g. P8 TR USB) from the found device
 - in the found device from the RF interface
 - For devices with remote management found via an area of a device other than the RF interface, the RSSI values are listed in order
 - in the RF interface (e.g. P8 TR USB) from the found device
 - in the RF interface (e.g. P8 TR USB) from the first device in the route
 - in the found device from the last device in the route (from the device in whose area it is searched)
 - the RSSI column also shows the route along which the search was performed. For some columns, an icon has been added, and after hovering the mouse, a floating help has been added.




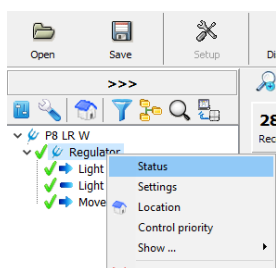
- **Device type** – type designation of the device
- **Description** – a brief description of the device or device channel
- **Note** – additional information about the device
- **DG** – device group
- **Section, Floor, Room, Row, Groups** – information of the distribution


6 Meaning and function of icons above columns with devices




6.1 Status and settings of devices

 Opens the **Status** tab, which reads the current status information from the device. The tab is also accessible in the drop-down menu under the right mouse button (*Status*). For some devices, it refers directly to the settings tab.



 Opens the **Device settings** tab, where can be displayed and changed all available parameters of the device. The tab is also accessible in the drop-down menu under the right mouse button (*Settings*).

6.2 Location

 Opens the **Location** tab. The tab is also accessible in the drop-down menu under the right mouse button (*Location*). The description of the device is displayed on the **Info** tab.

Note: Default - indicates a device that is not located or assigned to any device group.

ID	RETR	RSSI	Device type	Description	Note	DG	Section	Floor
992B58		78%;80%;	P8 LR W	Wireless controller with light se		(1)	(2)	(1)
992B5A				Light regulator		(1)	(2)	(1)
992B58/1				Light sensor		(1)	(2)	(1)
992B58				Movement		(1)	(2)	(1)
28332E	368/2	44%;54%;	P8 R DALI N	Receiver with DALI output		Default		
28332E/0				DALI group 0		Default		

6.2.1 Location settings tab

It is used to classify the device within the created project (see **chapter 4**) according to:

- placement in the building in Sections, Floors, Rooms, Switchboards as well as row and column numbers in the switchboard
- type, purpose of use or function into the Device, Default and User groups

Generate name – overwrites the name of the device with the type designation, or location.

The location of each channel is automatically taken over according to the location of the device (choice **According device**). After marking **Set**, it is possible to change the location of each channel of the receiver individually.

For multiple devices it's suitable to use the **Copy** and **Paste** features to speed up location settings.

6.3 Filter



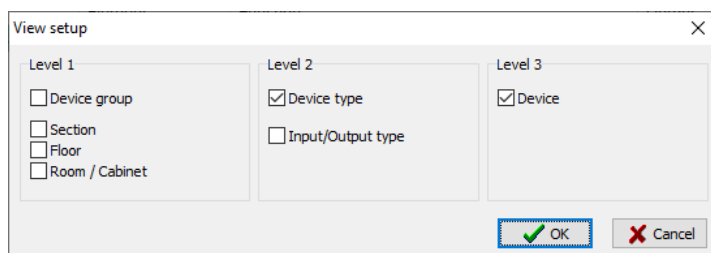
Opens the **View filter setup** tab. Displays in the current tree only devices according to selected criteria (parameters, location, groups). The other devices are then invisible, but will remain in the project. In the filtered list it's possible to show or hide channels without a location, channels with an already set location, or both.

To display all devices back use the button **Clear** that clears the selected criteria in this tab.

6.4 Device grouping



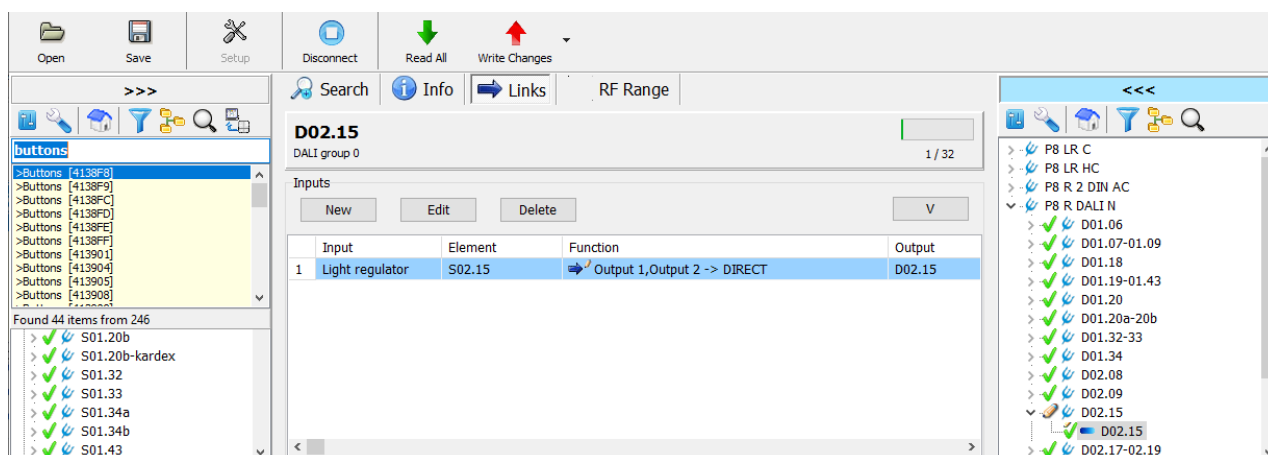
Opens the **View setup** tab which allows to sort the devices displayed in the tree according to the offered options. The window groups devices with the same parameters in the selected sublevels. In addition to the name itself, other information is displayed, such as device type, location, etc.



6.5 Search



Displays input field for keywords or their parts separated by a space (channel name, device name, device ID). The corresponding items from the tree are displayed below this field.



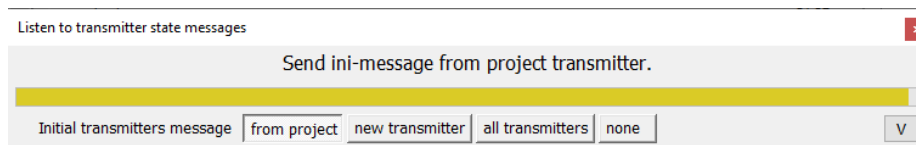
6.6 Listening to transmitters

6.6.1 Search for a transmitter in the left tree using an INI message



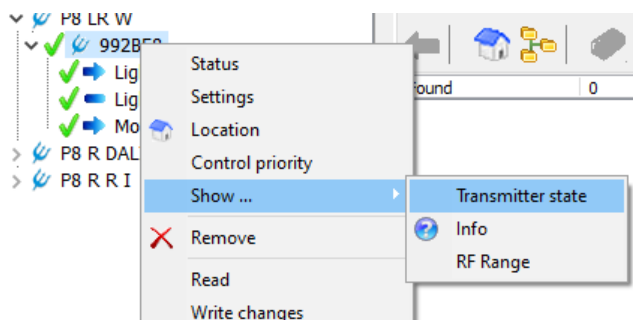
Opens **Listen to transmitter state message** floating window.

By sending an initialization message (pressing any button on the transmitter twice), the transmitter in the tree is automatically selected and the listening window is closed.

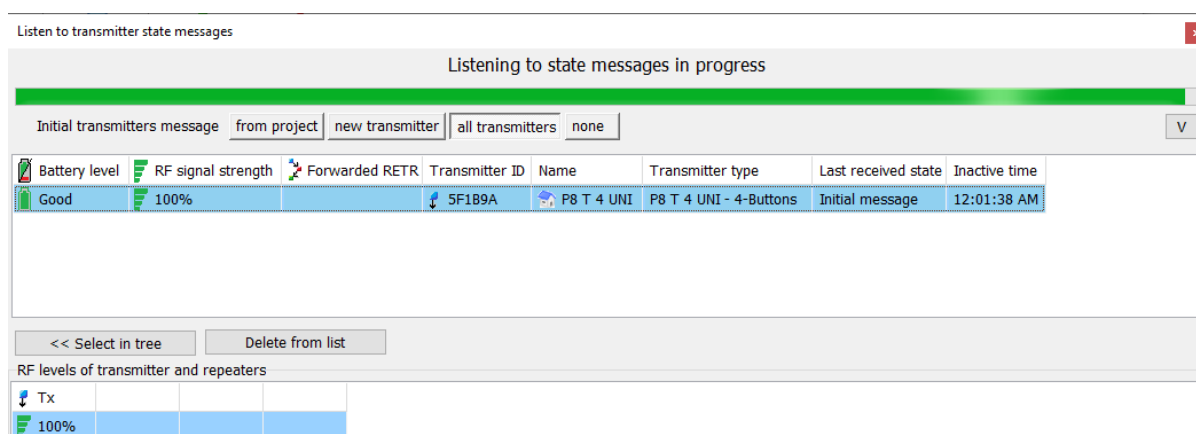


6.6.2 Transmitter state monitoring

Select the Transmitter state in the drop-down menu below the right mouse button for the selected transmitter.



Eventual: Menu – Project – Listen to transmitters.



There is also an option to add transmitters to the floating listening window by dragging from the left tree.


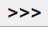
Displayed information:

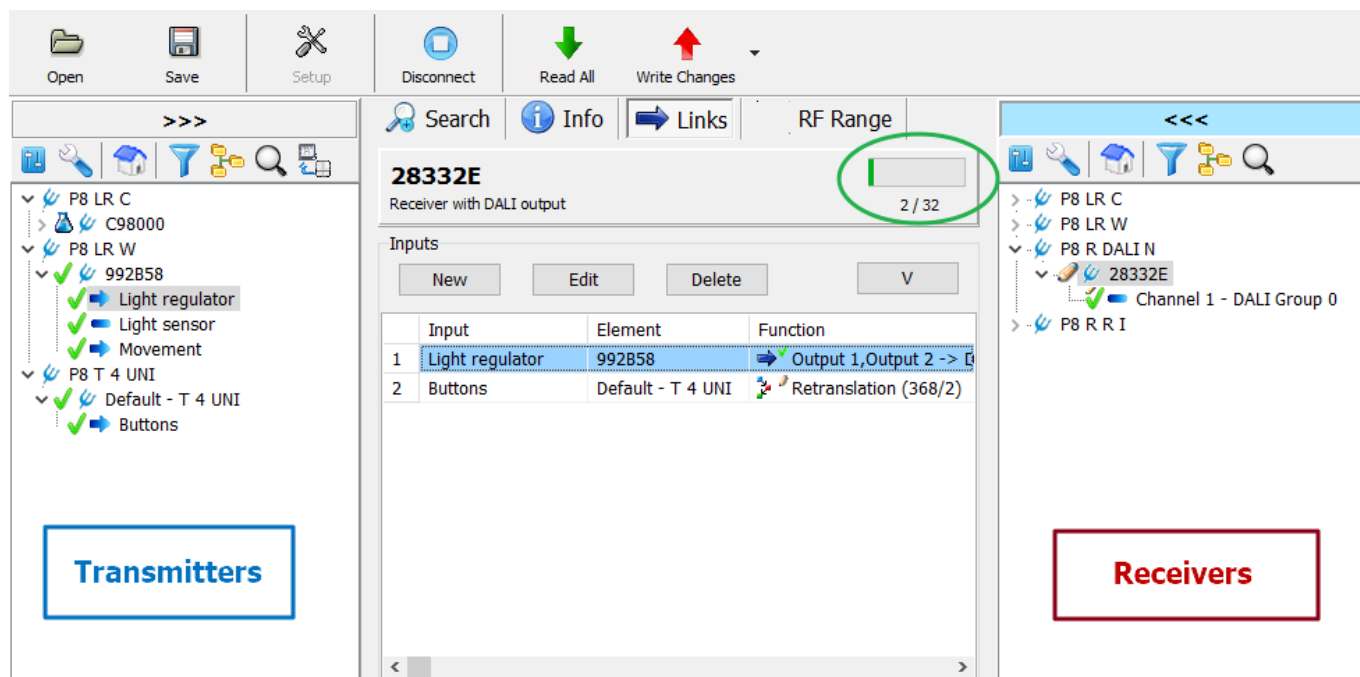
- Battery level
- Signal strength from the transmitter and signal strength from possible repeaters and acknowledged receiver (all the above RF signal levels are in terms of the received signal in the used RF interface)
- Group and index of possible repeaters
- Transmitter status (button, temperature, ...)
- Information whether the transmitter is in the project or new

6.6.3 Searching and adding new transmitters to a project






1. Switch form header to New transmitter or All transmitters.
2. Send an initialization message from new transmitter (pressing any button on the transmitter twice). The new transmitter is displayed with question mark instead of house.
3. Insert the transmitter into the project using the << Add to project button or drag it to the left tree.

7 Links







Select  **Links** section in the main window to start create links between the components. In the left column, all transmitters added to the project are displayed. In the right column, all receivers are sorted. Use the middle window to display current links, Edit, create New ones, set Priorities or Delete them. In addition, the left and right columns are supplemented by a button at the top  with which the preview for links according to transmitters or the preview for links according to receivers is selected. The link line displays the name of the transmitter, description of the function and the channel name of the receiver. Available memory of the receiver is expressed graphically by the green horizontal bar graph and numerically by two numbers divided by slash 2/32 - the first number provides information on established links while the second shows the maximum number of links for each receiver.







A list of links with functions is displayed in the Function column.

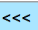
Input	Element	Function	Output
Light regulator	992B58	 Output 1,Output 2 -> DIRECT	Channel 1 - DALI Group 0
Buttons	Default - T 4 UNI	 Retranslation (368/2)	
Buttons	Default - T 4 UNI	 Top left -> TIMER (V: 100,0%)	Channel 2 - DALI Group 1
Buttons	Default - T 4 UNI	 Top right -> ON/OFF (V: 100,0%)	Channel 2 - DALI Group 1
Buttons	Default - T 4 UNI	 Bottom right -> DIMM 1BTN (V: 100,0%)	Channel 3 - DALI Group 2

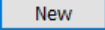
In the column describing the function of the transmitter, several icons are displayed, which are used to specify the type and status of the link. The individual statuses, including their meanings, are described in the following table.

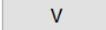
The type of link	Direct controlling, DEST	
	Repeater function (RETR)	
	Priority	
	Other functions	
Authorization of link function	Active = the function will be performed (white binding background)	 Top right
	Inactive = the function will not be performed (grey binding background)	 Top right

Locking the link against deleting	Unlocked (the lock image at the bottom right is not displayed)	
	Locked (the lock image at the bottom right is displayed)	
The write status of link in the device	Written in the device (top right - green check mark)	
	Not written in the device (top right - pencil symbol)	

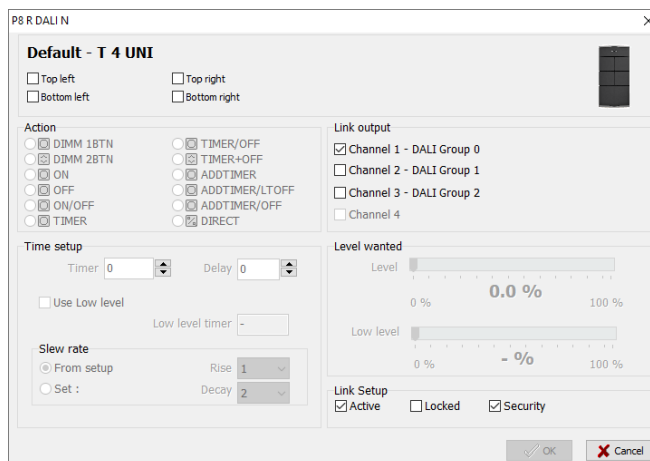
7.1 Creation of new link

When the preview for links according to receivers is selected  in the right tree mark the channel of the receiver intended for the link and in the left tree mark the transmitter.

The  button opens the window for creating and specifying a new link between selected transmitter and the channel of the receiver.

Another option is to select **New** in the drop-down menu below the  button.

The third option is to create a new link by dragging the input channel from the left tree to the center list of links.



Note: The link editor consists of several parts, some of them are common to most devices (types of links) and some are specific according to the input (transmitter) or the type of output (receiver).

At the top of the window select the transmitter button(s) for a link.

Action – desired function setting.

Link output – setting the outputs that the function / action should affect.

Additional parameters for the selected function / action:

Time setup (only for DALI outputs) – time selection for the function „Timer“ and the output relay closing delay time.

Link Setup - general properties (settings) of the link.

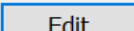
Active – activate or deactivate created links.

Locked – protect links in the receiver memory against manual removal using buttons on the device.

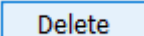
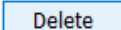
Security – adds a special floating code to increase the safety of the communication between the devices.


ACK – select this option for the device to require acknowledgement of receipt of the information transmitted (it is recommended to select this option in case the regulator is connected with a single receiver).

7.2 Change link settings

To change the link setting press the  button to open the window of the selected link. Use this window to change all settings and functions of the current link between the transmitter and the appropriate receiver channel. This window contains the same options as the window for the creation of a new link.

7.3 Cancelling the link

Press the  button to remove the selected link. To call up the function that cancel all unlocked links in the device, it is necessary to hold down the **SHIFT** key and click the  button at the same time. The user is prompted for confirmation before deleting all unlocked links. After deleting, only locked links remain in the machine.

It is necessary to confirm the changes by saving it to the memory of the device by click on  button.

7.4 Basic links functions

- **DIMM 1TL** (1-btn. function) – by short presses of the transmitter button, the brightness of the luminaires is alternately adjusted to the desired level and the luminaires go out. By long pressing the output signal can be continuously adjusted.
- **DIMM 2TL** (2-btn. function) – by short presses of the transmitter buttons, the brightness of the luminaires is alternately adjusted to the desired level and the luminaires go out. By long pressing the output signal can be continuously adjusted.
- **ON** (1-btn. function) – by pressing the transmitter button, the brightness of the luminaires is set to the desired level.
- **OFF** (1-btn. function) – by pressing the transmitter button the lights go out.
- **ON/OFF** (1-btn. function) – pressing the transmitter button alternately adjusts the brightness of the luminaires to the desired level and the luminaires go out.
- **TIMER** (1-btn. function) – after pressing the transmitter button, the relay closes for the set time.
- **TIMER/OFF** (1-btn. function) – after pressing the button of the transmitter the relay closes for the set time, in case of another press of the button before the end of the timer, the relay opens.
- **TIMER+OFF** (2-btn. function) – after pressing the button of the transmitter the relay closes for the set time, in case of pressing the second button before the end of the timer, the relay opens.

7.4.1 Advanced functions

Summary of functions from transmitters accessible exclusively by remote administration.

Switching and dimming receivers

- **ADDTIMER** (1-btn. function) – after pressing the transmitter button, the relay closes for the set time (marked as *Addition*). Each additional press increases the switching time by the same amount of time. The number of increments is limited by the time set as *Timer max*.
- **ADDTIMER/OFF** (1-btn. function) – after pressing the transmitter button, the relay closes for the set time (marked as *Addition*). Each additional press increases the switching time by the same amount of time. After reaching *Timer max*. another press opens the relay.
- **ADDTIMER/LTOFF** (1-btn. function) - after pressing the transmitter button, the relay closes for the set time (marked as *Addition*). Each additional press increases the switching time by the same amount of time. The number of increments is limited by the time set as *Timer max*. Long press of the button opens the relay.
- **OFF+ON** (2-btn. function) – Pressing the upper button on the transmitter opens the closed receiver relay. Pressing the lower button of the transmitter closes the open relay.

Receivers for window blinds

- **STOP** (1-btn. function) – after pressing the transmitter button, the closed output relay opens (stops the movement of the blind / shutter).
- **OPEN/OFF** (1-btn. function) – after pressing the transmitter button, the output relay for opening closes for a preset time. Pressing button repeatedly the relay opens.
- **CLOSE/OFF** (1-btn. function) – after pressing the transmitter button, the output relay for closing closes for a preset time. Pressing button repeatedly the relay opens.

Lighting regulator for Light regulator output

- **Dimmer** (1-btn., 2-btn. function) – after pressing the transmitter button, the regulation is switched off and the output signals of the regulator are set to the required value from the link (*Start Value*), regardless of the value of ambient light. By long pressing the output signal can be continuously adjusted.
- **ON** (1-btn. function) – after a short press of the transmitter button, the regulator changes the control mode and times according to the *Setup*. A long press has no effect.
- **OFF** (1-btn. function) - after a short press of the transmitter button, the regulator changes the control mode and times according to the *Setup*. A long press has no effect.
- **ON/OFF** (1-btn. function) – after a short press of the transmitter button, the regulator alternately changes the mode and times according to the current state *If isn't it in Normal mode and When required mode selected*.
- **Mode** (1-btn., 2-btn. and 3-btn. function) – automatically assigns supported states to the selected buttons. After a short press of the transmitter button, the regulator changes the control mode and times according to the automatically assigned functions. Supported states vary depending on the number of buttons selected.

- **ON+OFF** (2-btn. function) – after a short press of the upper (lower) button of the transmitter, the regulator changes the mode and times of regulation according to the *On action setup* (*Off action setup*). A long press has no effect.
- **Special function** (1-btn., 2-btn. function) – possibility to change the mode, timer and regulator settings.

Lighting regulator for Movement output

- **Movement** (1-btn. function) – pressing the transmitter button activates the motion sensor in the light regulator.
- **OFF** (1-btn. function) – pressing the transmitter button calms down the motion sensor in the light regulator.
- **Timer** (1-btn. function) – a short press of the transmitter button activates the motion sensor in the lighting regulator for the time set in the field *Time setup - Timer*.
- **Add timer** (1-btn. function) – each short press of the transmitter button extends the current time of the activated motion sensor in the lighting regulator by the time set in the field *Time setup – Add timer*.

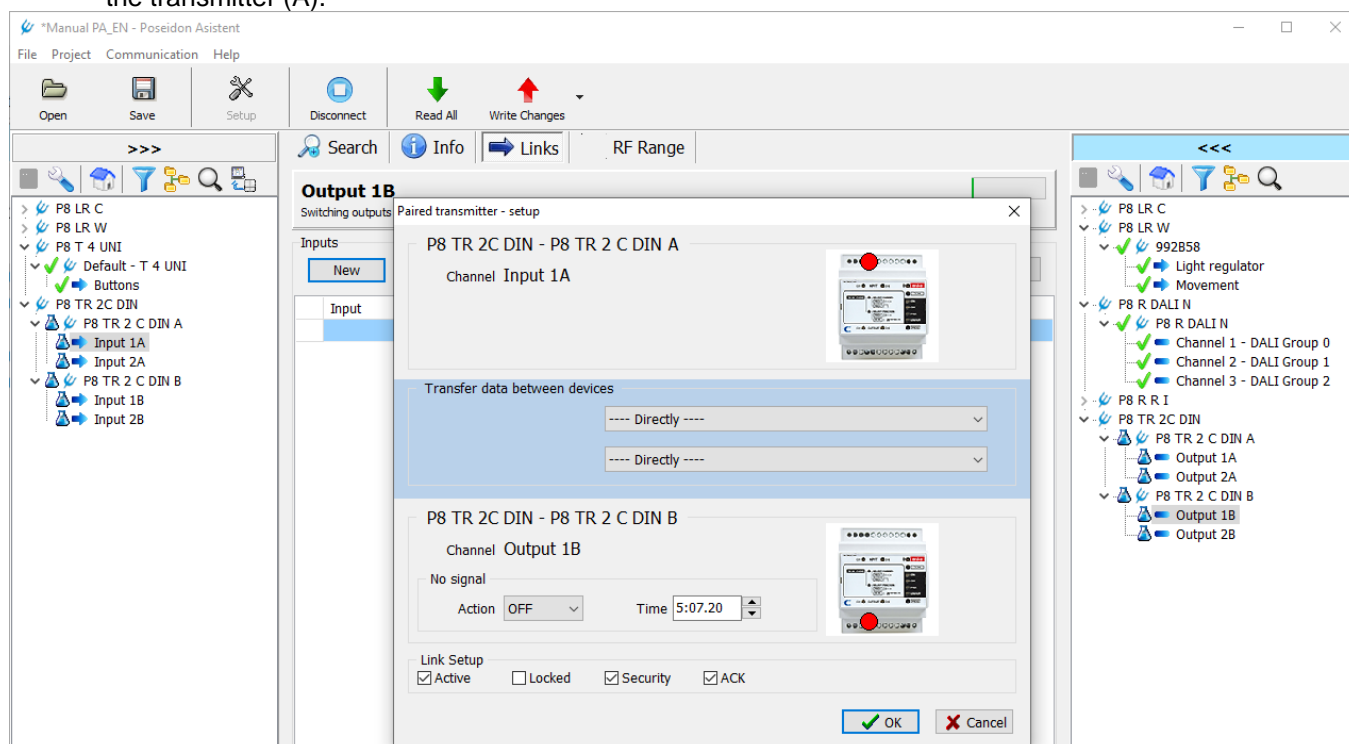
7.5 Pairing link P8 TR 2 C/U DIN

A pair connection can only be created between these two types of devices, this is not a feature of other devices! For two-way communication with feedback, it is necessary to create a pair of links for the required channels of both transmitters. Always the input channel of one transmitter with the output of the other and conversely.

Example:

A pair connection of channel No.1 of transmitter P8 TR 2 C DIN (A) with channel No.2 of transmitter P8 TR 2 C DIN (B)

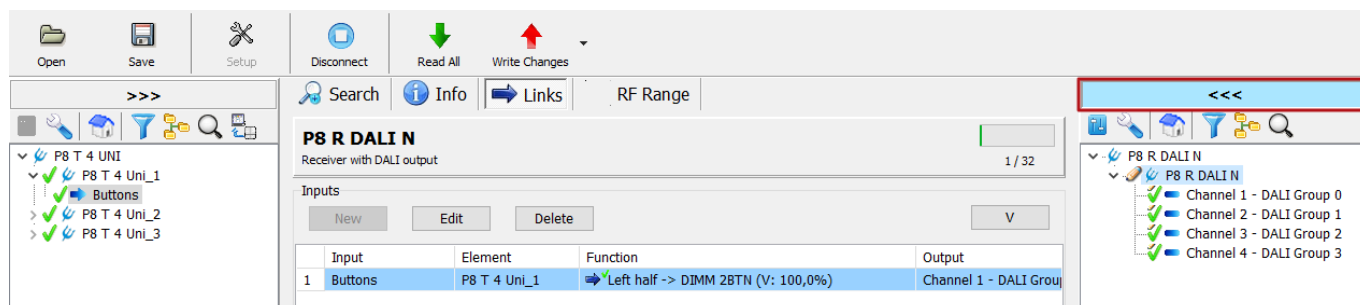
- 1) In the left column, mark the channel *Input 1* of the transmitter (A), in the right *Output 1* of the transmitter (B). The *New* button opens the tab for creating a link.
Transfer data between devices – allows you to select from the menu up to two devices from the project that can be used as signal repeaters in a given order. *Directly* = no repeaters.
No signal – Output action setting after the set *Time* in case of loss connection between transmitters.
- 2) To create a feedback link, it is necessary to create the same link for the direction from the transmitter (B) to the transmitter (A).




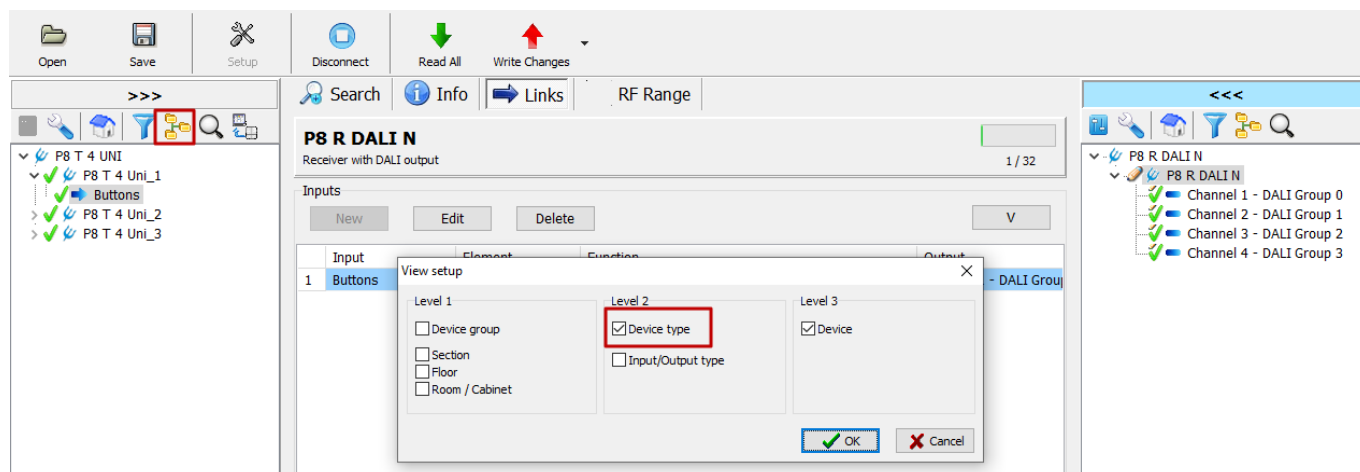
7.6 Copying possibilities

7.6.1 Copy links for multiple transmitters

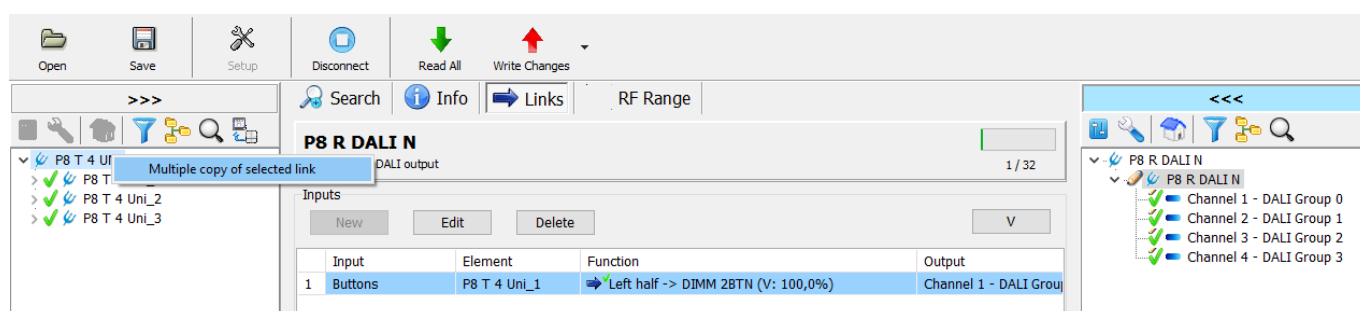
The function is intended for multiple creation (copying) of links for several transmitters to the receiver. A link from the sample transmitter is created to the target receiver. Make sure the preview for links according to receivers is selected <<<.



In the next step, it is necessary to group all transmitters of the same type into a common branch. The *View setup* window is called up by clicking on the  icon on the left transmitter's side. Check one of the boxes in *Level 2* (for example *Device type*) and confirm selection with the OK button.



Select the sample transmitter link from the link list. Press the right mouse button on common branch in the left tree and choose "Multiple copy of selected link" from the floating menu.



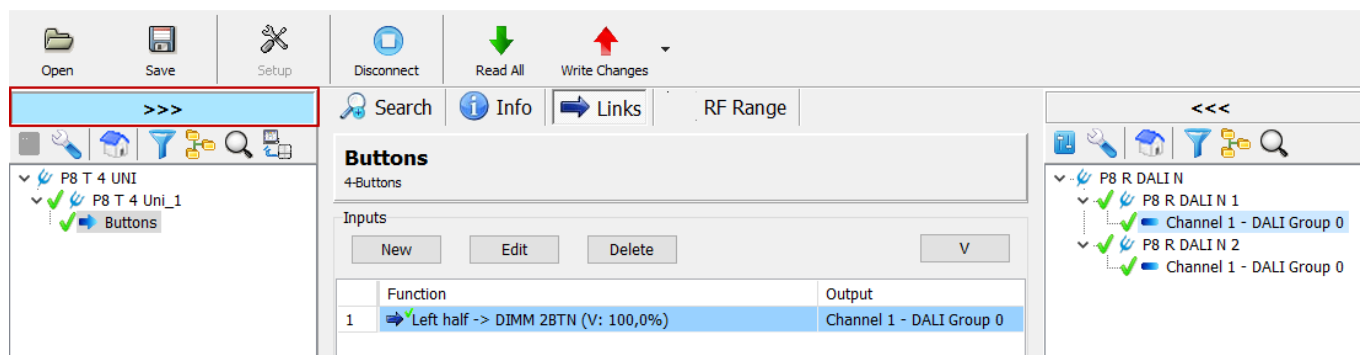
+


The window with confirmation appears. If more links from the selected transmitter are created in the device, then the user is asked whether to copy all links or only the selected one. After confirmation, links for all transmitters from the selected branch are automatically created. If all links cannot be created, the user is notified on lack of memory in the device. The result of creating links is immediately displayed in the list of links. Then it is necessary to *Write changes* into devices.

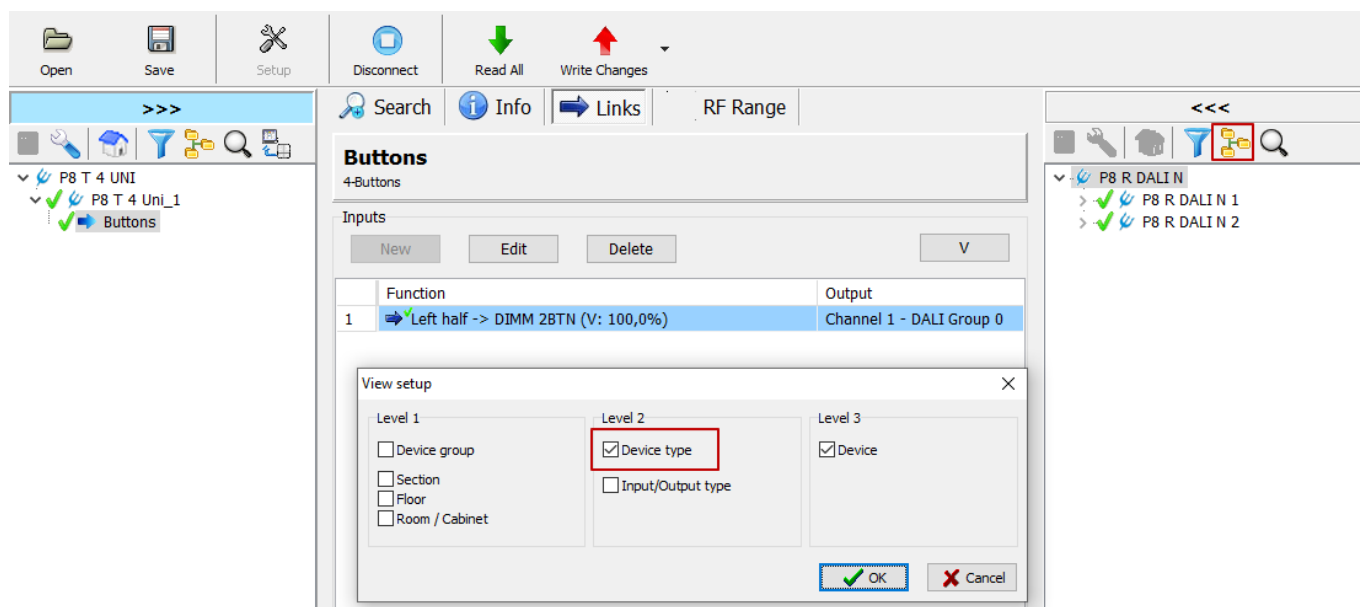
Note: Links are created only for transmitters of the same type as the sample transmitter. Other types of transmitters are ignored. Links are created only from transmitter channels that are of the same type (buttons, percentages, contacts, DEST,...).

7.6.2 Copy links for multiple receivers

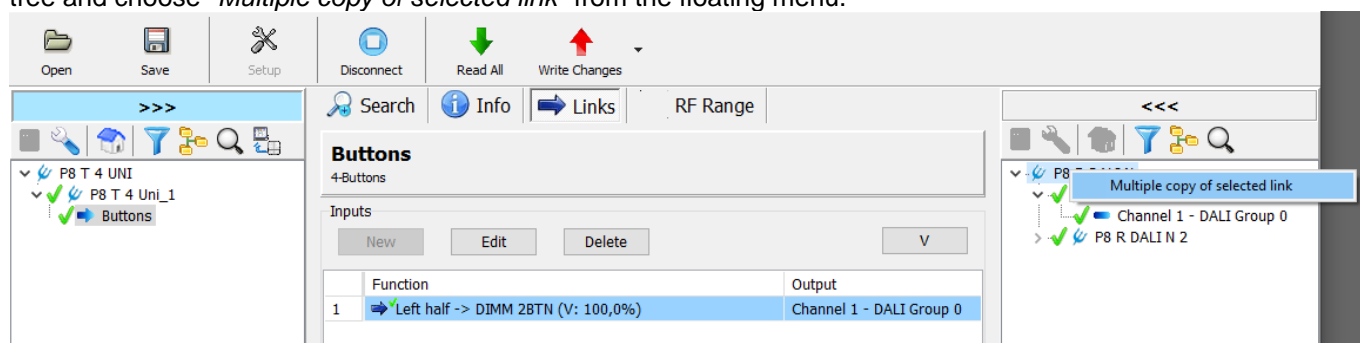
The function is intended for multiple creation (copying) of links to several receivers. A sample link from the desired transmitter is created to the target receiver. Make sure the preview for links according to transmitters is selected >>>.



In the next step, it is necessary to group all receivers of the same type into a common branch. The *View setup* window is called up by clicking on the  icon on the right receiver's side. Check one of the boxes in *Level 2* (for example *Device type*) and confirm selection with the OK button.



Select the sample transmitter link from the link list. Press the right mouse button on common branch in the right tree and choose "Multiple copy of selected link" from the floating menu.



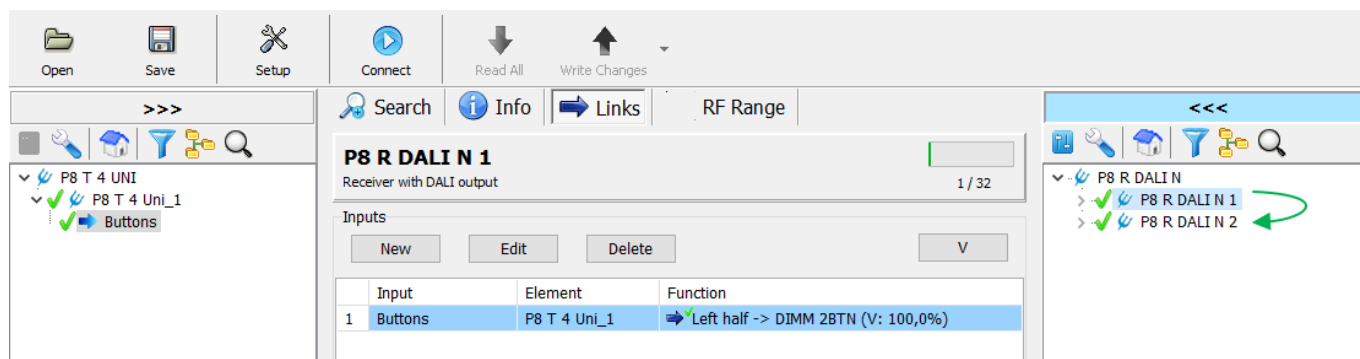
The window with confirmation appears. After confirmation, the sample link to the remaining receivers from the selected branch is automatically created. Then it is necessary to *Write changes* into devices. It is good to check and, if necessary, name the appropriate channels of the receivers correctly.

Note: DEST and RETR bindings cannot be copied in this way! Only links from the same transmitter as the sample link are copied and overwritten (there must also be a match of the selected button and possibly also a CODE parameter).

7.6.3 Replacing links in a receiver with links from another receiver of the same type

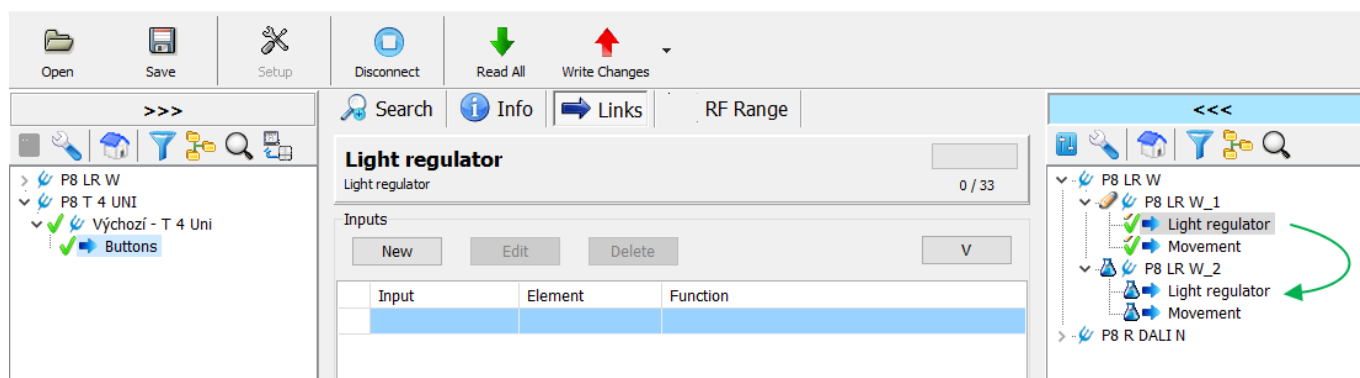
This procedure allows you to replace (copy) links to a receiver of the same type. Select the receiver on the right side and drag it by holding the left mouse button on another receiver of the same type. Confirm link replacement.

Note: If some links have already been created in the target receiver, they will be deleted (replaced) by links from the copied receiver.



7.6.4 Copy receiver channel settings

By holding down the SHIFT key and dragging the source receiver channel to the destination receiver channel, you can copy the receiver channel settings.



7.6.5 Other possibilities and creation of special links

Additional options for creating links can be found in the drop-down menu below the button V.

Edit – opens a window of an already created link for the possibility of change.

Delete – allows to delete the selected link.

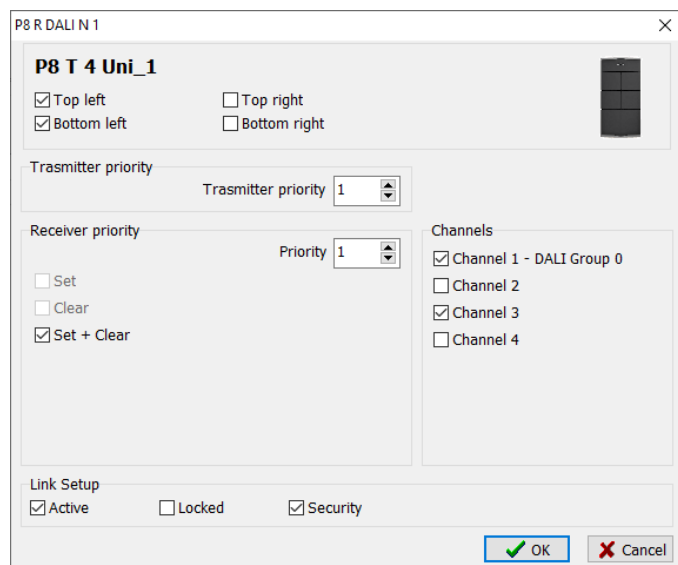
New with same parameters – opens a window for creating a new link with the selected transmitter. The link will already be preset according to the marked link. Therefore, the same link is established only with another transmitter.

Replace input – opens the marked link window and replace the existing transmitter with the one marked in the left column

RETR – opens a window for creating repeater link (see **chapter 7.9**).

Priority – opens a window for setting priorities and priority links (see **chapter 7.7**).

7.7 Setting priorities



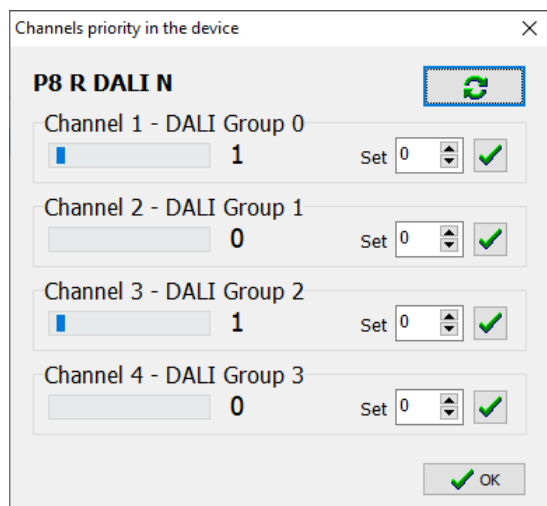
In the **Priority** window (see chapter 7.6.5) it is possible to set the priority of a given transmitter and at the same time create a link for setting the priority of a given receiver and its individual output channels.

The selected priority of the transmitter in the corresponding link is stored in the memory of the receiver.


Transmitter priority: sets a certain precedence for this transmitter in relation to the selected channels. In the order of the links, the transmitter priority setting must be higher than the actual functional link of this transmitter. All functions (actions) performed on this link and the links of this transmitter located further in the link memory are performed with this priority value.

If none of the priority type links is created for the given transmitter, then the transmitter accesses to the device / output / channel with priority 0.

Receiver priority: the transmitter can set, reset or set and reset the priority of this receiver (or selected channels) by pressing the selected button(s). After setting the priority, the receiver (selected channel) responds only to transmitters that have priority of this and higher values.

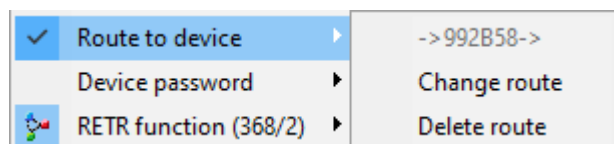


Detection and change of the currently set device priority is possible after right-clicking on the selected device by selecting **Control priority**.

Pressing the  button reads the current priority values of the individual channels of the device. Select **Set** to change the priority to the specified value. Confirm with the green mark to write the selected priority to the device.

7.8 Editing the transmission route

If the device which you want to communicate with via the RF interface is not in range, it is possible to use another device (which is within radio range) and communicate through it. Editing the route to the device is available by right-clicking on the device and selecting "Route to device". If a route is set, an icon will appear next to the subgroup name and the first item in the subgroup contains a list of route IDs.



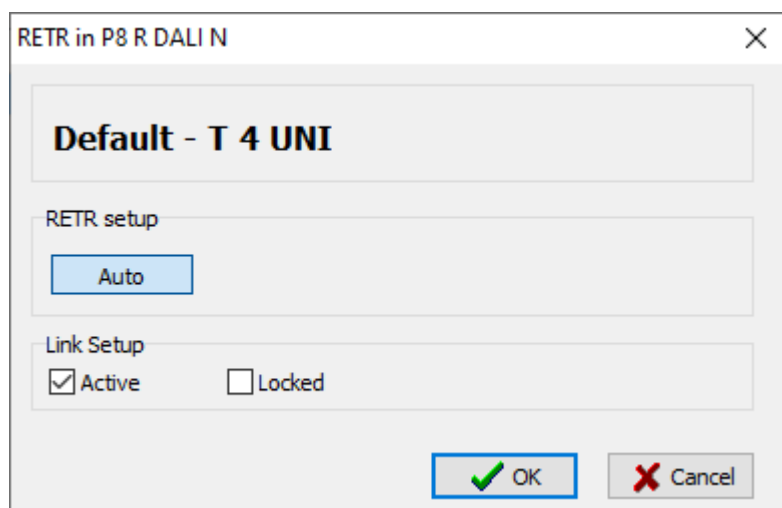
7.9 Repeater function

In case of insufficient signal range, it is possible to use the signal repeater function. Then the signal will be forwarded via this repeater element.

7.9.1 Creating a repeater link

In the left column it is necessary to select the transmitter or its channel whose signal will be forwarded. In the right column select the receiver (repeater). Not just one of its channels as in case when creating a common link.

Press the  button and select "RETR". A new window for creating the repeater link appears.



RETR setup:

Auto – allows to create a repeater link. Depending on the settings in the device, the receiver can operate in the simple repeater mode and also in a group of up to three receivers (repeaters).

Link setup:

Active – activation or deactivation of the link.

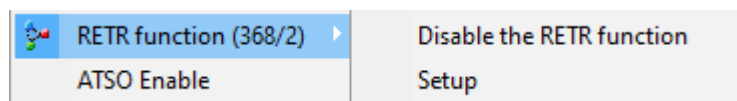
Locked – locking (protection) of the link in the receiver's memory against manual deletion by the buttons on the device.

7.9.2 Repeater settings in the device

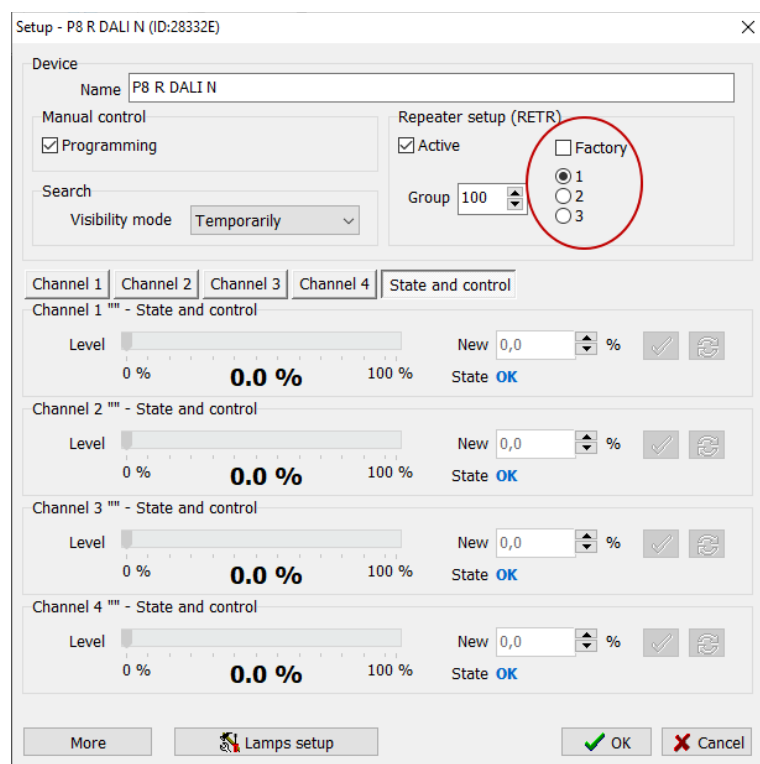
It is possible to access the repeater settings on the device by right-clicking on the device and selecting "RETR function".



If the RETR function is active in the device, the icon is displayed next to the subgroup name and the setting is indicated in the name. There are direct commands in the subgroup to enable and disable the RETR function. The "Setup" calls up the settings of the device.



If more repeater points from one transmitter are needed, it is necessary to ensure that receivers (repeaters) that are in the mutual RF range have a different index (1,2,3) set, otherwise there is a risk of mutual interference. The repeater group and Index are always selected in the settings of the individual devices.



7.10 Keyboard shortcut support

In the *Links* tab, it is possible to use several keyboard shortcuts.

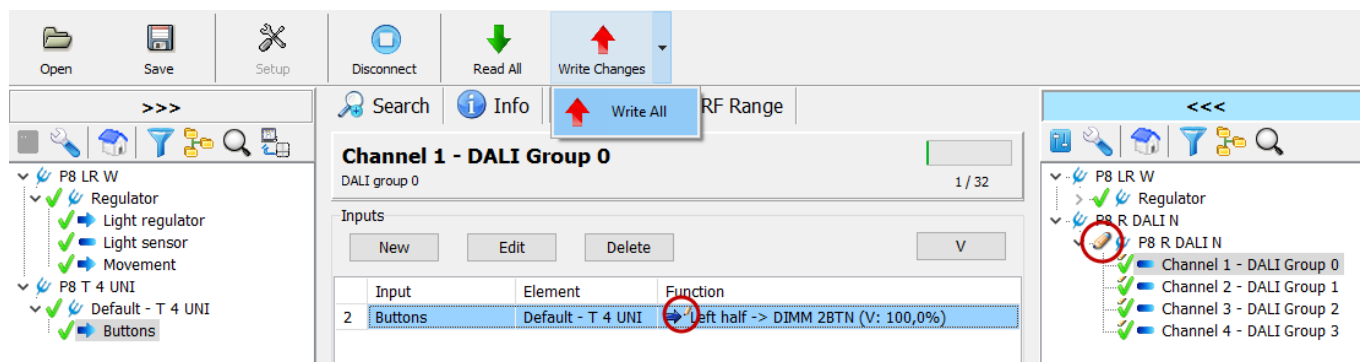
- The "INS" key calls up the editing of the selected link
- The "DEL" key calls up a query about deletion of the link
- The "ENTER" key searches for the corresponding input channel in the left tree
- The "WIN-Properties" key calls up the "V" floating menu

8 Changing the device settings

8.1 Write changes to the device

Each change of the settings or creating a link is displayed by changing the green symbol in front of the device name to the pencil symbol. For these changes to take effect, they must be written to the device's memory.

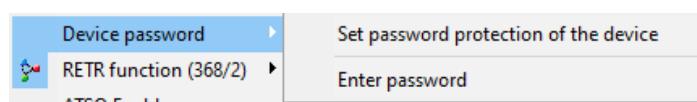
- To write only currently made changes to one device: by selecting and pressing the right mouse button, select "Write changes" in the drop-down menu.
- Write changes to all devices in the project: in the main menu - Communication - Write (or click on the red arrow button "Write changes").
- Write all data in the project to the device (data that has not been changed will also be overwritten): select "Write all" in the drop-down menu.



After correct writing, the green check symbol appears on the device again.

8.2 Device password

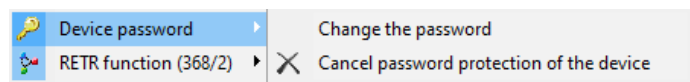
For a device that has a password set, it will not be possible to make setting changes, edit or delete its links without an open the project file. Setting the device password is available by right-clicking on the device and selecting "Device password".



Set password protection of the device = after entering a new password, this password is written immediately to the device (only possible in online mode).

Enter password = enter a password that is already set in the device.

If password protection of the device is used, a yellow key icon is displayed next to the subgroup name.



Change the password = changes immediately the password in the device (only possible in online mode).

Cancel password protection of the device = delete the password in the device (only available online).

Note: The device password can be used from version POSEIDON® Asistent 1.6.1. Do not use the password where there is a risk of configuration by an older version POSEIDON® Asistent 1.5.x.x.! In case of complications with the password, a factory reset of the device is required to cancel the forgotten device password!

9 RF Range

A useful tool for verifying the quality of transmission and designing repeater paths. It is used to determine the actual mutual ranges of the RF signal between the radio interface (P8 TR USB, P8 TR IP or P8 GWA DIN) and up to four other devices.

The window showing the signal levels is accessible by pressing the **RF Range** button.

The first row of the table is automatically filled by the ID number of the radio interface you are connected to the installation.

The other four cells (marked 1 to 4) are already used to assign individual devices for which we need to verify the RF range.

- Selected devices are simply selected from the menu of the left window and moved with the mouse to the given cell (1 to 4).
- To change an already inserted device, drag the other device from the left window to the ID number in the given cell.
- You can change the order of already selected devices by dragging the ID numbers.
- The shortcut **RT** indicates that the device is already used as a repeater and also shows in which repeater group **X/Y** is inserted (**X** - repeater group number, **Y** - assigned index in the group).

The **Analyze** button starts the detection of the current range status.

The screenshot shows the POSEIDON software interface. At the top, there is a toolbar with buttons for 'Open', 'Save', 'Setup', 'Disconnect', 'Read All', and 'Write Changes'. Below the toolbar is a navigation bar with 'Search', 'Info', 'Links', and a search box containing 'RF Range'. The main area is divided into a left sidebar and a right main panel.

The left sidebar shows a tree view of devices:

- P8 LR W
 - Regulator
 - Light regulator
 - Light sensor
 - Movement
- P8 R DALI N
 - P8 R DALI N
 - Channel 1 - DALI Group 0
 - Channel 2 - DALI Group 1
 - Channel 3 - DALI Group 2
 - Channel 4 - DALI Group 3
- P8 R R I
 - P8 R R I
 - Channel 1

The right main panel shows the results of the 'Analyze' button. At the top, there is a status bar with buttons for 'Analyze', 'Good', 'Low', 'Low limit', and 'none'. Below this, there are four device entries:

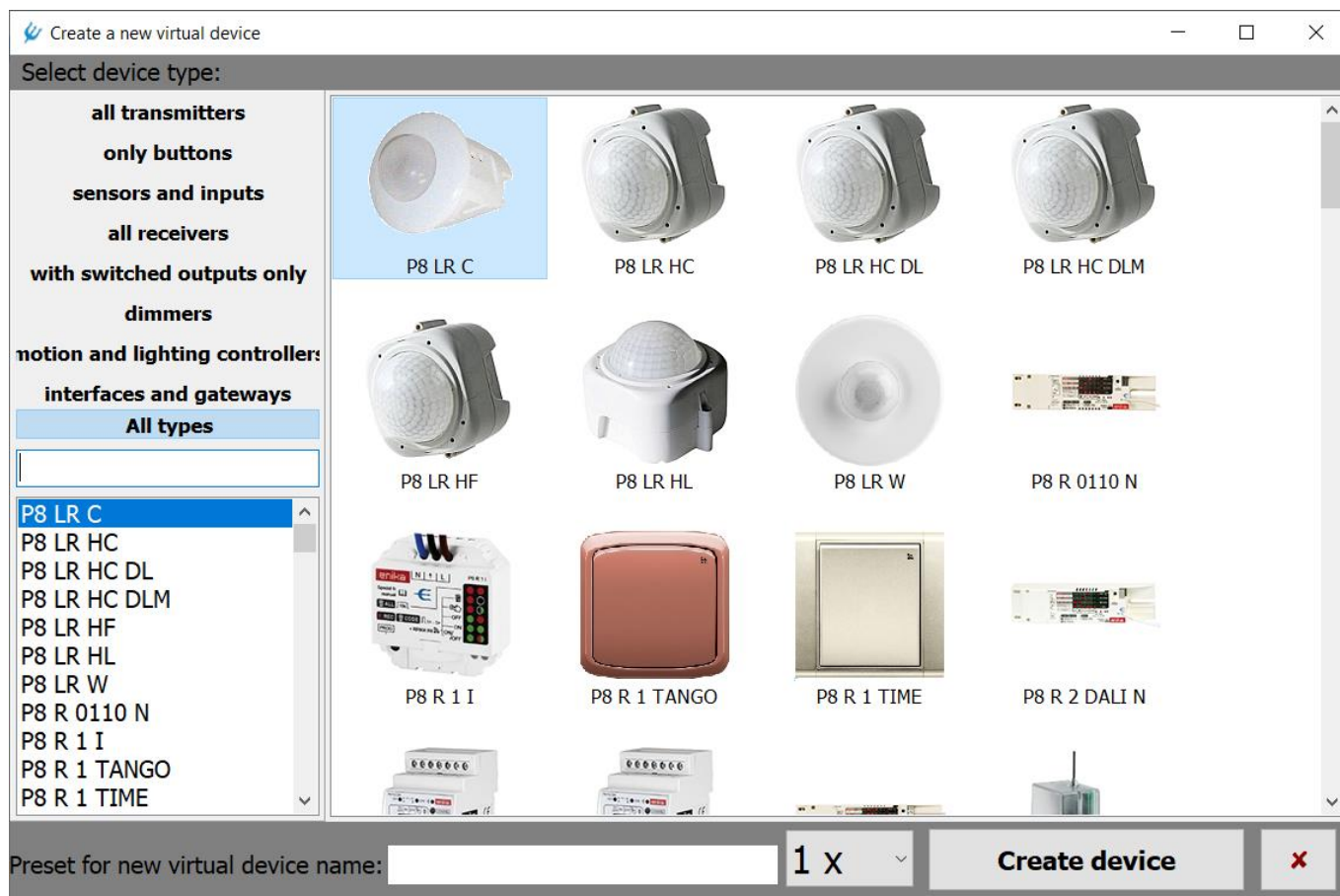
- 0 - [ID: 105620]
 - RF interface**
 - Buttons: 1, 2, 3
 - 1: 86% 2: 42% 3: 68%
- 1 - [ID: 992B58]
 - Regulator**
 - Buttons: 0, 2, 3
 - 0: 82% 2: 100%
- 2 - [ID: 28332E]
 - P8 R DALI N**
 - Buttons: 0, 1, 3
 - 1: 100% 3: 100%
 - RT: 368/2
- 3 - [ID: 241811]
 - P8 R R I**
 - Buttons: 0, 1, 2
 - 2: 100%
- 4 - not set
 - set device

10 Virtual devices

Virtual devices are used to create an off-line project without the need to establish communication with the device. To create a virtual element, click the *Project* tab and select *Add virtual device*.

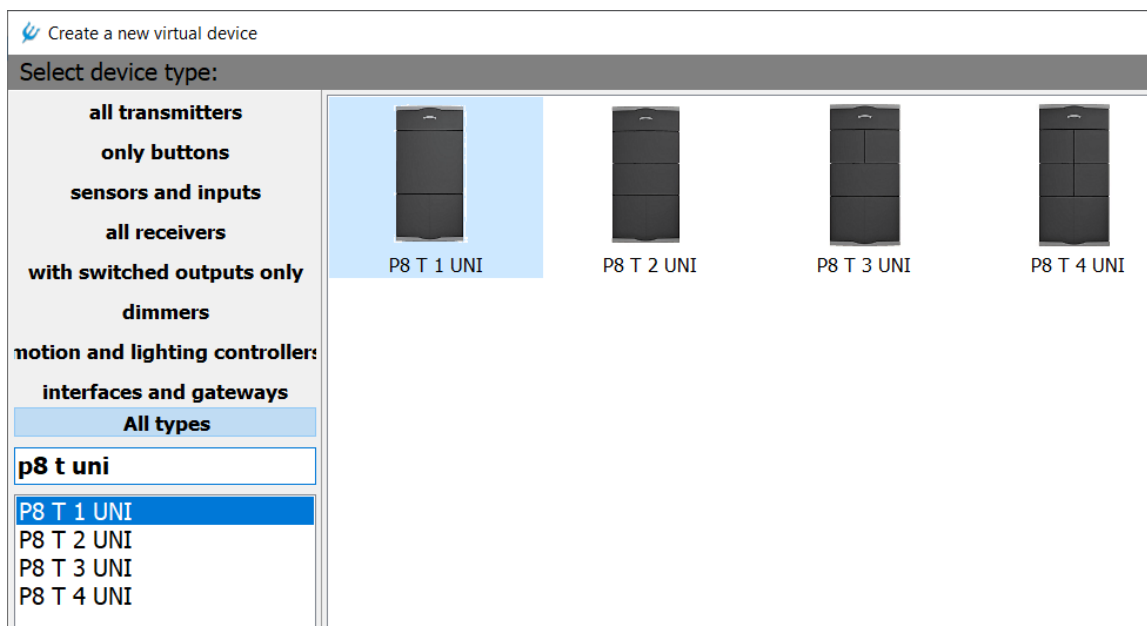
The screenshot shows the software menu bar with 'File', 'Project', 'Communication', and 'Help' tabs. The 'Project' tab is selected, and a dropdown menu is open showing the following options:

- Listen to transmitters
- Add virtual device** (highlighted)
- Settings



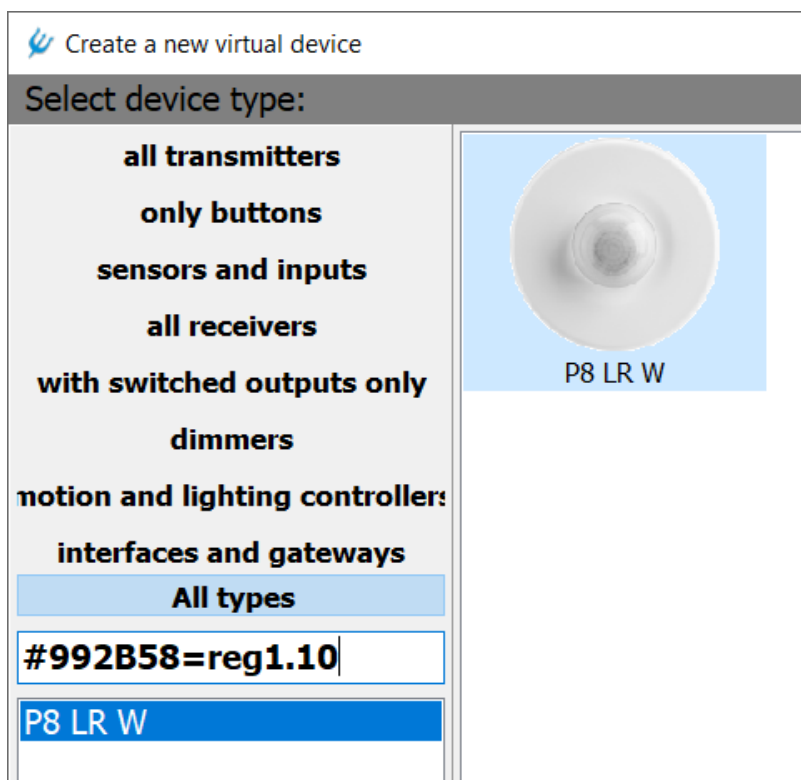
There are several ways to select a virtual element type:

1. The selection can be limited by filters
 - a. Device type filter (upper left corner)
 - b. Filter for required characters in the type name (input field below the group filter)



2. The selection from the offered list of devices or the list of pictures of devices (mouse selection)

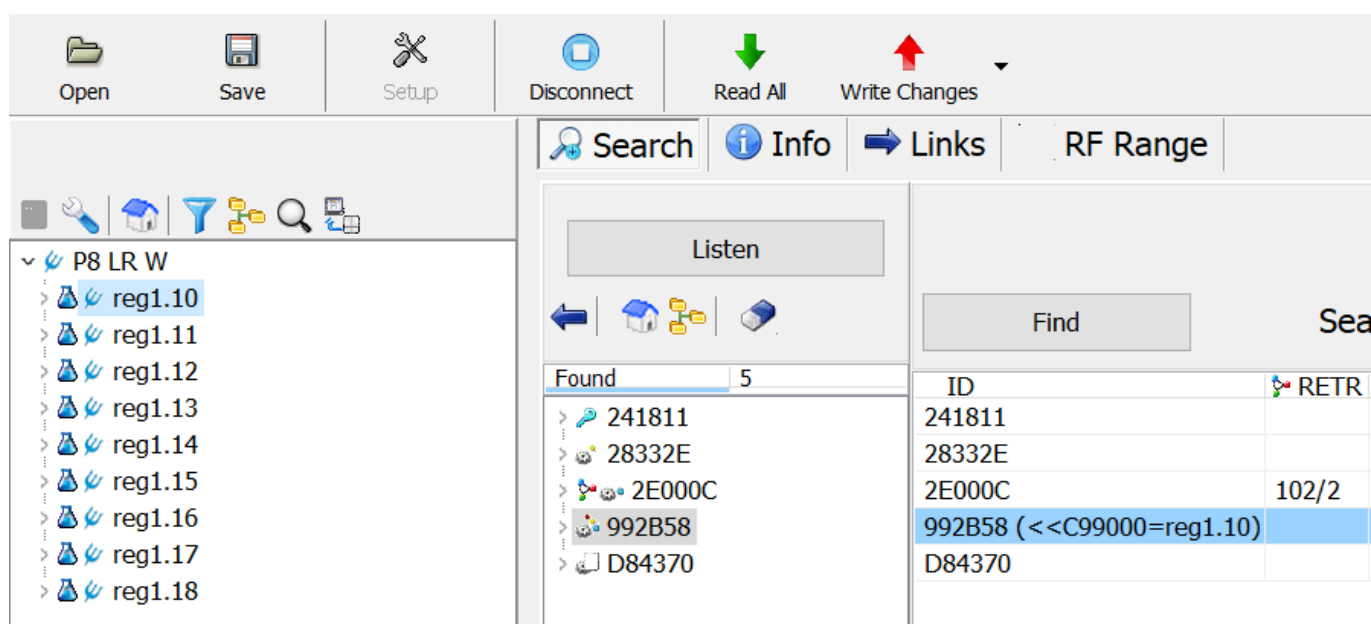
3. Selection by entering a specific device ID (if already known). In this case, the ID will be noted for later pairing with a real device.
 - a. Enter the # and 6 characters of the device ID in the filter field
 - b. After the device ID insert = character and a name suggestion



Creation and inserting a new virtual device into the project is done with the "Create device" button. The desired device name can be preset. If the name ends with a number, then this number is incremented after creation. It is also possible to set multiple 1x-10x creation.




When searching for a real device, the ID column contains information about the existence of a virtual element with the same ID.

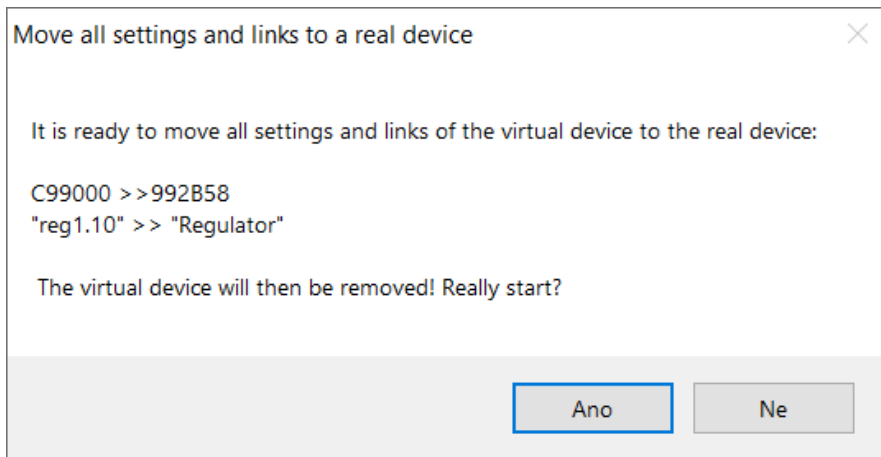


After insertion into the project, there is a note in the *Info* tab about the possibility of replacement.

ID	RETR
C99000 (>>992B58)	
C99008	
C99010	
C99018	
C99020	
C99028	
C99030	
C99038	
C99040	
992B58 (<<C99000=reg1.10)	
992B5A	
992B58/1	
992B58	

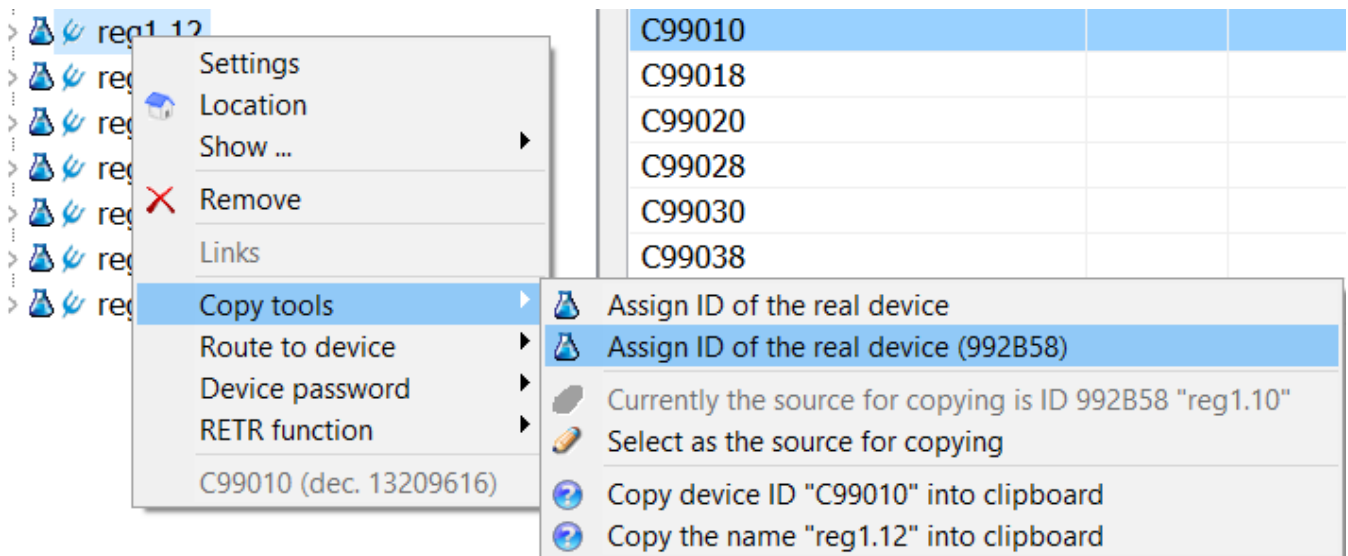
To transfer the prepared data in the virtual device to the real device use the floating menu of the virtual element.

The transfer is performed by selecting  **Move all settings and links to a real device**



If a real ID has not been assigned yet to a virtual element, it can be assigned additionally via the floating menu.

- a. By entering the ID from the keyboard
- b. Or according to the ID that is selected as the copy source



11 Technical support and software updates

This user manual describes the POSEIDON® Asistent software Version_1.6.3.

The current version of POSEIDON® Asistent software is available for free at www.lightingautomation.eu/

Subject to change without notice.

The logo for ENIKA, featuring the word "enika" in a bold, red, lowercase, sans-serif font with a registered trademark symbol (®) to the upper right.A commemorative logo for ENIKA's 30th anniversary. It features the year "1990" on the left and "2020" on the right, both in red. Between the years are three stylized "X" characters, each composed of a 3x3 grid of red squares, all in red.

ENIKA.CZ s.r.o.

Vlkov 33

509 01 Nová Paka

Czech Republic

tel. [+420 493 773 311](tel:+420493773311)

enika@enika.cz

www.enika.eu

www.lightingautomation.eu