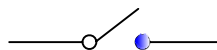
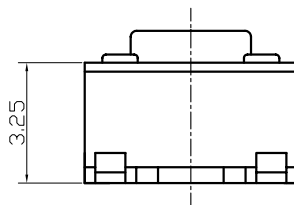
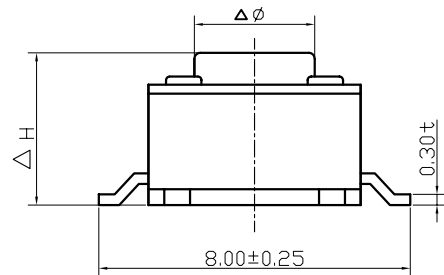
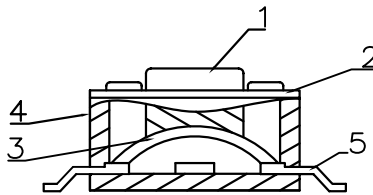
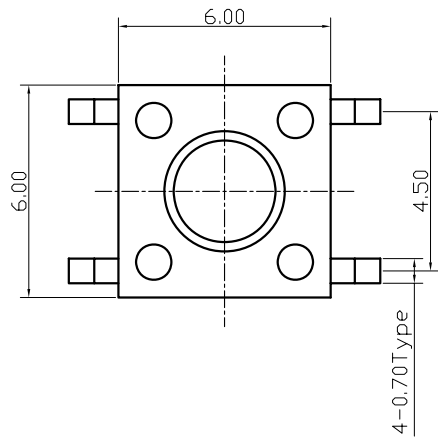



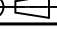
ABIDE BY WEEE&ROHS



Circuit diagram

table 1

PART NO	ΔH	ΔØ
TA603201S01	4.3	3.4
TA603201S02	5	3.3
TA603201S03	5.5	3.3
TA603201S04	6.0	3.3
TA603201S05	6.5	3.3
TA603201S06	7.0	3.2
TA603201S07	7.5	3.2
TA603201S08	8	3.1
TA603201S09	9	3.0
TA603201S10	9.5	3.0
TA603201S11	10	3.0

5	Terminal	—	1	Brass	Plating Silver	—	
4	Base	—	1	Nylon	Black	—	
3	Contact	—	1	Copper—Silver Composite		—	
2	Cover	—	1	Iron	Ni Plated	—	
1	Keystone	—	1	Nylon	Black	—	
ITEM	PART NAME	TER'NO.	QTY.	MATERIAL	FINISHING	REMARK	
APPROVALS			DATE	 东莞市凯华电子有限公司 KAIHUA ELECTRONICS CO.,LTD			
DRAWN	yinxuxin	2007.03.03					
CHECKED				TITLE:	轻触开关		
APPROVALS				PART NO.	TA603201S11		
TOLERANCES ARE		30≤L	±0.30	ANGLE	UNIT: mm	SCALE: 1:1	PROJ: 
		10<L≤30	±0.2				
		5<L≤10	±0.15				
		L≤5	±0.1	±2'	DRAWING NO.		SHEET 1 OF 1

ECN NO.	REV.	DATE.	DESCRIPTION.	CHANGE.	CHECK.	APPRO.
—	A	—	NEW	—	—	—

1. 一般特性 General Characteristics

- 1.1 额定值(Rating Value): DC12V 50mA.
- 1.2 工作温度(Work Temperature Range): $-10^{\circ}\text{C} \sim 70^{\circ}\text{C}$
- 1.3 存贮温度(Store Temperature Range): $-20^{\circ}\text{C} \sim 80^{\circ}\text{C}$
- 1.4 正常测试条件(未有特殊说明量测在以下条件进行):

General test condition (Tests and measurements shall be made under the following standard conditions unless otherwise specified):

正常温度: $5^{\circ}\text{C} \sim 35^{\circ}\text{C}$ 相对湿度: 45%~85% RH 气压: 8,600~10,600 帕
 Temperature: $5^{\circ}\text{C} \sim 35^{\circ}\text{C}$ Relative humidity: 45%~85% Air pressure: 8,600~10,600 pa

2. 产品外观及尺寸要求 Appearance & Dimension Requirement

- 2.1 产品外形结构紧凑, 无配合不良.
The structure of product is compact, and assembly of parts has no badness.
- 2.2 产品塑胶部件无严重缩水、披锋、欠注、斑点、破损或变形现象.
The plastic parts of product have no serious defects such as very serious shrink, scarcity, fleck, disrepair, transmutation, etc.
- 2.3 产品引脚和外壳无严重氧化、脏污、变形、毛刺或电镀不良.
Lead feet and shell have no serious defects such as oxidation, smudge, disrepair, burr, defects on plating.
- 2.4 开关操作顺畅, 节奏感强, 无明显卡塞现象.
Operating switch is unhindered, rhythmmed, and there is not palpable clag.
- 2.5 产品结构及尺寸参见产品规格图纸.
Construction and dimensions: Refer to individual product drawing.

3. 电气特性 Electronic Characteristics

No.	项 目 Item	测试方法 Test Method	测试设备 Equipment	特性要求 Requirements
3.1	接触电阻 Contact Resistance	在低电流 ($\leq 100\text{mA}$) 条件下测试. Measured at low current (100mA or less).	低电阻测试仪 Low Resistance Meter	100m Ω
3.2	绝缘阻抗 Insulation Resistance	测试相邻引脚之间, 引脚与外壳之间的绝缘阻抗. Measurement shall be made between adjacent terminals, between terminal and shell.	绝缘测试机 Insulation Resistance Tester	100M Ω
3.3	耐压测试 Dielectric Withstand Voltage	输入一定电压 (50-60Hz, 电压值 AC 250V) 1 分钟, 漏电流为 2mA, 测试邻近端子间. Apply certain voltage (50-60Hz, AC 250V) for 1 minute between adjacent contacts of the connector with 2mA leakage sensitivity.	耐压测试机 Puncture Tester	没有绝缘破坏. 电弧等异常. No arcing, break down and damaging insulation.

4. 机械特性 Mechanical Characteristics

No.	项 目 Item	测试方法 Test Method	测试设备 Equipment	特性要求 Requirements
4.1	操作力 Operation Force	<p>逐渐施力操作开关按键，测量开关到达全部工作行程时所需的最大操作力度。</p> <p>Operate the keystroke of the switch and then increase press strength gradually, Measured maximum operation force while the travel of the switch is full.</p>	<p>测力计</p> <p>Force Gauge</p>	160±50gf
4.2	行程 Full travel	<p>垂直操作开关按键，量测开关顶端最大移动距离。</p> <p>Operate the keystroke of the switch vertically, the travel distance of keystroke moving from its free position to maximum moving distance shall be measurement.</p>	<p>游标卡尺</p> <p>Vernier Caliper</p>	0.25±0.1mm

5. 可靠性测试 Reliability trial

No.	项 目 Item	测试方法 Test Method	测试设备 Equipment	特性要求 Requirements
5.1	可焊性试验 Solder ability Test	<p>端子顶部被浸入焊锡炉中，温度为 260±5℃，时间 5±1 秒。</p> <p>The top of the terminals shall be dipped in the solder bath at 260±5℃ for 5±1 seconds.</p>	<p>控温锡炉</p> <p>Solder Stove</p>	<p>引脚至少 95%上锡。</p> <p>Ninety-five percent of terminals shall be dipped.</p>
5.2	寿命试验 Operation Life	<p>开关在寿命试验设备上以约 60 次 / 分的速度连续被操作，具体次数见规格图示。</p> <p>Switch shall be operated continuously at about 60 cycles /min without load.</p>	<p>寿命试验机</p> <p>Life Tester</p>	<p>寿命:50,000 次</p> <p>实验后:</p> <p>绝缘电阻: 10MΩ Min</p> <p>操作力: 变化在±50%内</p> <p>开关外观及结构无损坏。</p> <p>Life test:50,000cycles</p> <p>After test,</p> <p>Insulation resistance: 10MΩ Min</p> <p>Operating force: Change should be within ±50% of specified value.</p> <p>No abnormalities shall be recognized in appearance and construction.</p>

5. 可靠性测试 Reliability trial

No.	项目 Item	测试方法 Test Method	测试设备 Equipment	特性要求 Requirements
5.3	耐焊接热 Resistance to Soldering heat	<p>开关在 150℃条件下预热 2 分钟后再于 260℃的回流焊炉中焊接。 Switches shall be heat up at 150℃ for 2 minutes, then be soldered at 260℃ Temperature profile(Reference)</p> 	回流焊 Re-flow soldering Stove	<p>本体无变形，能满足于机械、电气性能。 Appearance should be not damaged, electrical and mechanical characteristics shall be satisfied.</p>
5.4	耐高温测试 Resistance to Heat Test	<p>放置在温度 80±2℃环境中 96 小时后，再置于正常条件下 1 小时后测定。 The switch shall be stored at a temperature of 80±2℃ for 96 hours, Measurements shall be made after it be subjected to the standard conditions for 1 hour.</p>	高低温 试验机 High & Low Temperature Tester	<p>外观，机械及电气性能均符合要求。 Appearance, electrical and mechanical characteristics shall be satisfied.</p>
5.5	耐低温测试 Resistance to Cold Test	<p>放置在温度-20±2℃环境中 96 小时后，再置于正常条件下 1 小时后测定。 The switch shall be stored at a temperature of -20±2℃ for 96 hours, Measurements shall be made after it be subjected to the standard conditions for 1 hour.</p>	高低温 试验机 High & Low Temperature Tester	<p>外观，机械及电气性能均符合要求。 Appearance, electrical and mechanical characteristics shall be satisfied.</p>
5.6	耐湿性测试 Resistance to Humidity Test	<p>放置于温度 40±2℃,相对湿度为 90~96% 环境中 96 小时后，再置于正常条件下 1 小时后测定(注意要擦去水滴)。 The switch shall be stored at a temperature of 40±2℃,relative humidity 90~96% for 96 hours, Measurements shall be made after it be subjected to the standard conditions for 1 hour (Wipe out water drip).</p>	恒温恒湿箱 Temperature & Humidity Tester Chamber	<p>外观，机械及电气性能均符合要求。 Appearance, electrical and mechanical characteristics shall be satisfied.</p>
5.7	盐雾实验 Salt Mist Test	<p>试件在下述实验后测量： 1. 温度： 35±5℃ 2. 盐溶液浓度： 5±1%（质量百分比）， 3. 试验时间： 8 小时， 4. 试验后，将盐沉积物用水冲掉。 The switch shall be checked after following test: 1. Temperature: 35±5℃ 2. Salt solution: 5±1wt% 3. Duration: 8 hours, 4. After immersing, salt deposit shall be removed by running water.</p>	盐雾 试验机 Salt Spray Tester	<p>在金属件上没有严重腐蚀斑点。 No remarkable corrosion shall be recognized in metal parts.</p>