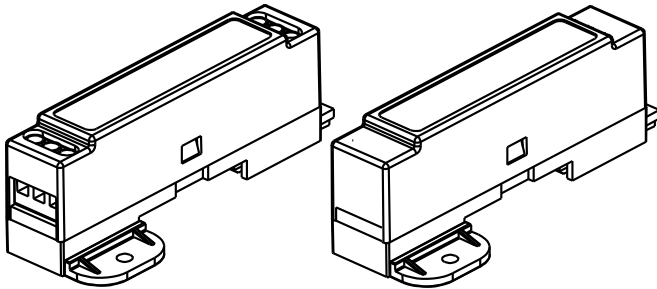


"Intelligent designs for high productivity"

1 MODULE ENCLOSURE LOW

FOR M36 DIN-RAIL

SERIES
M1 LOW

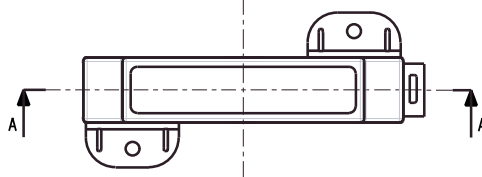
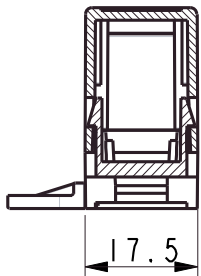
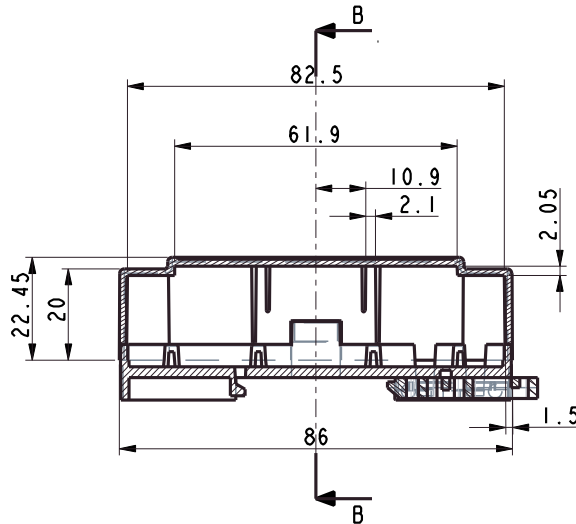


M1 low modules enclosure.

A simple and low cost two pcs enclosure for compact applications.

Options: Printed numbers and symbols on the cover.

Series M1 low is, if requested, available with customer specified holes in front. Prototype PCB, customized label and packing are available.



TECHNICAL DATA:

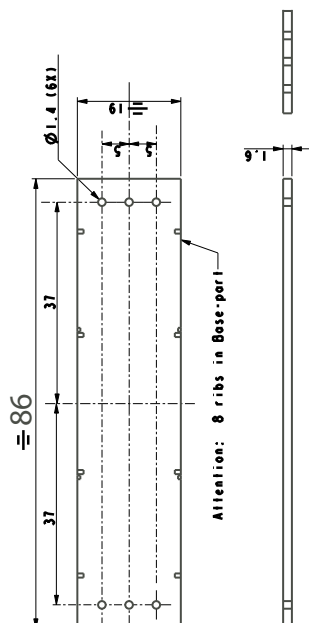
TOP PART:

Material: PC (other on request)
 Colour: Grey (RAL 7035) other on request
 Max.temperature: 100 C
 Width: 17.5mm
 (1 modules)

BASE PART:

Material: Noryl (other on request)
 Colour: Black (RAL 9005) other on request
 Max.temperature: 100 C
 Terminals: Up to 6 fixed or (2x3) plugable
 Mounting: DIN-rail (EN50022)

HORIZONTAL PCB DIMENSIONS:



TYPE M1 LOW	ORDER CODE
Complete 257 for plugable	p/n 8078010170
Complete 605 for fixed or screwless terminals	p/n 8078010171
Complete, closed, no terminals	p/n 8078010172
Top part, grey, closed	p/n 7078010170
Top part, grey, 257	p/n 7078010171
Top part, grey, 605 fixed terminals	p/n 7078010172
Terminal for M1, 257/3, HO/A, PCB part	p/n 1155703580
Terminal for M1, 256/3, wire part	p/n 1155603080
Terminal for M1 605/3, fixed terminals	p/n 3950143108
Screw/self-cutting 2 pcs	p/n 7006102965
Base part M1 with clip and 2 screws	p/n 4969002170
DIN-rail clip for M1	p/n 0669000225