

## NUTS AND CAPS

### UNION Series

1

2

3

ACCESSORIES

4



4

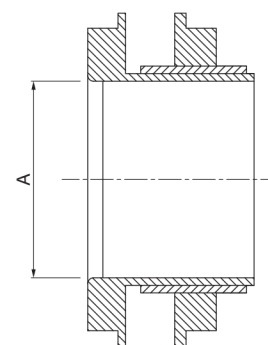


	CABLE SLEEVES (●)		CABLE SLEEVES (▲)		DIAPHRAM CABLE SLEEVE	
	Ø fixing hole		Glow wire 650°C	Glow wire 960°C	Glow wire 650°C	Glow wire 960°C
PG7	13					
PG9	16					
PG11	19					
PG13,5	21					
PG16	23	<b>805.3304</b> 100/1000	<b>805.3314HF</b> 100/1000	<b>805.3314</b> 100/1000	<b>805.3324HF</b> 100/1000	<b>805.3324</b> 100/1000
PG21	29	<b>805.3305</b> 100/1000	<b>805.3315HF</b> 100/1000	<b>805.3315</b> 100/1000	<b>805.3325HF</b> 100/1000	<b>805.3325</b> 100/1000
PG29	39,5	<b>805.3306</b> 50/500				
PG36	47,5	<b>805.3307</b> 25/200				
PG42	54,5					
PG48	60					
M12x1.5	12					
M16x1.5	16					
M20x1.5	20					
M25x1.5	25					
M32x1.5	32					
M40x1.5	40					
M50x1.5	50					
M63x1.5	63					

- (●) SCABOX Series type.
- (▲) CUBIK Series type.
- (\*) Without nut.



COUPLERS (WITH NUT AND SEAL)		BLANKING PLUG (*)
Standard	Heavy duty	
		<b>805.3385</b> 100/1000
		<b>805.3384</b> 100/1000
		<b>805.3383</b> 100/1000
		<b>805.3382</b> 100/1000
<b>805.3334</b> 10/50		<b>805.3381</b> 100/1000
<b>805.3335</b> 10/50		<b>805.3380</b> 100/1000
<b>805.3336</b> 10/50		<b>805.3386</b> 50/500
<b>805.3337</b> 5/25		<b>805.3387</b> 25/250
		<b>805.3388</b> 25/250
		<b>805.3389</b> 25/250
		<b>805.5840</b> 25/250
		<b>805.5832</b> 50/500
		<b>805.5825</b> 100/1000
<b>805.5225</b> 10/50	<b>805.5325</b> 10/50	<b>805.5820</b> 100/1000
		<b>805.5816</b> 100/1000
<b>805.5240</b> 5/25	<b>805.5340</b> 5/25	<b>805.5812</b> 100/1000
		<b>805.5850</b> 25/250
		<b>805.5863</b> 25/250



	A	Thread
<b>805.3335</b>	22mm	PG21
<b>805.3336</b>	27.8mm	PG29
<b>805.3337</b>	38.7mm	PG36
<b>805.5225</b>	19.6mm	M25x1.5
<b>805.5325</b>	19.6mm	M25x1.5
<b>805.5240</b>	33.6mm	M40x1.5
<b>805.5340</b>	33.6mm	M40x1.5

