

# Preset counters mechanic

## Meter and revolution counters, subtracting

### Display 4-digits, manual reset by button

#### ME102, UE102



ME102 - Meter counter



UE102 - Revolution counter

#### Features

- Preset counter with one preset
- Meter or revolution counter
- Subtracting
- Display 4-digits
- With reset button
- Compact design
- Surface mount housing

#### Technical data - electrical ratings

Preset	1 preset
Preset setting	Press reset button and hold. Enter desired value in any order. Release reset button.
Trigger / end contact	At 0000: As momentary contact: Contact duration dependent on speed e.g. 100 ms, at 10000 rpm and 50 revolutions = 1 digit At 9999: As permanent contact, contact remains until reset. If no reset takes place, the contact switches back at 8999.
Trigger / precontact	Preset number as momentary contact. End contact as permanent contact
Output contact	Change-over contact
Switching voltage	230 VAC / VDC
Switching current	2 A
Switching capacity	100 VA / 30 W
Spark extinguisher	Recommended for inductive load

# Preset counters mechanic

## Meter and revolution counters, subtracting

### Display 4-digits, manual reset by button

ME102, UE102

#### Technical data - mechanical design

Number of digits	4-digits
Digit height	5.5 mm
Count mode	Subtracting in a rotational direction to be indicated, adding in reverse direction
Drive shaft	Both sides, $\varnothing 4$ mm
Reset	Manual by button to preset
Operating torque	$\leq 0.8$ Nm (with 1 rev. = 1 count) $\leq 0.4$ Nm (with 50 rev. = 1 count)
Measuring range	See part number
Ambient temperature	0...+60 °C
Housing type	Surface mount housing
Housing colour	Grey
Dimensions W x H x L	60 x 62 x 68.5 mm
Mounting	Surface mount housing
Weight approx.	350 g
Material	Housing: Hostaform POM, grey
Connection	Cable 0.3 m, 3-pin

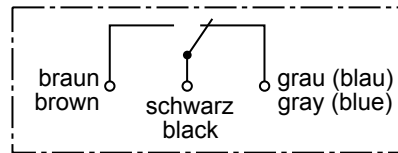
#### ME102

Function	Meter counter with preset
Display	White numbers on black Decimal digits in red
Measuring speed	5 revs. = 1 digit = <2000 m/min 5 revs. = 10 di. = <200.0 m/min
Measuring accuracy	1 m, 1 dm, 1 cm
Dimensions mounting plate	60 x 62 mm

#### UE102

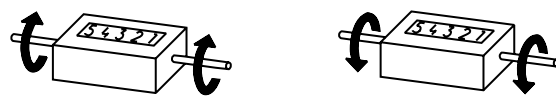
Function	Revolution counter with preset
Display	White numbers on black
Operating speed	$\leq 10000$ rpm
Dimensions mounting plate	60 x 62 mm 60 x 85 mm

#### Connection diagram



The connection diagram illustrates the ready status (counter preselected).

#### Direction of strokes and rotation



Away from user  
Sense of rotation I

Towards user  
Sense of rotation II

#### Accessories

##### Measuring wheels for ME102

MR211.04A	Circumf. 20 cm, knurled aluminium
MR241.04D	Circumf. 20 cm, smooth Hytrel TPE-E
MR261.04A	Circumf. 20 cm, knopped rubber NBR Nitril
MR291.04D	Circumf. 20 cm, grooved Hytrel TPE-E

# Preset counters mechanic

## Meter and revolution counters, subtracting

### Display 4-digits, manual reset by button

## ME102, UE102

### Part number

#### Meter counter

ME102.0

#### Measuring range / trigger

- A 9999 m / contact at 0000
- B 999.9 m / contact at 0000
- C 99.99 m / Contact at 0000
- D 8999 m / Contact at 9999
- E 899.9 m / Contact at 9999
- F 89.99 m / Contact at 9999
- G 8999 m / Contact at 9999, with precontact
- H 899.9 m / Contact at 9999, with precontact
- I 89.99 m / Contact at 9999, with precontact

#### Count mode /Direction of rotation

- 03 5 revs. = 100 digits / I
- 04 5 revs. = 100 digits / II
- 09 5 revs. = 10 digits / I
- 10 5 revs. = 10 digits / II
- 15 5 revs. = 1 digit / I
- 16 5 revs. = 1 digit / II
- 21 50 revs. = 1 digit x 10 / I
- 22 50 revs. = 1 digit x 10 / II

#### Housing

- A Grey, cable 0.3 m / without precontact / mounting plate 60 x 62 mm
- B Grey, cable 0.3 m / with precontact / mounting plate 60 x 62 mm

#### Trigger

- 1 Momentary contact at 0000
- 2 Permanent contact at 9999
- 3 Permanent contact at 9999, permanent precontact (\*) as momentary contact  
(\* indicate desired value when ordering)

#### Revolution counter

UE102.0

#### Measuring range / trigger

- A 9999 m / contact at 0000
- D 8999 m / Contact at 9999
- G 8999 m / Contact at 9999, with precontact

#### Count mode /Direction of rotation

- 05 1 rev. = 10 digits / I
- 06 1 rev. = 10 digits / II
- 11 1 rev. = 1 digit / I
- 12 1 rev. = 1 digit / II

#### Housing

- A Grey, cable 0.3 m / without precontact / mounting plate 60 x 62 mm
- E Grey, cable 1.0 m / with precontact / mounting plate 60 x 62 mm
- C Grey, cable 0.3 m / without precontact / mounting plate 60 x 85 mm

#### Trigger

- 1 Momentary contact at 0000
- 2 Permanent contact at 9999
- 3 Permanent contact at 9999, permanent precontact (\*) as momentary contact  
(\* indicate desired value when ordering)

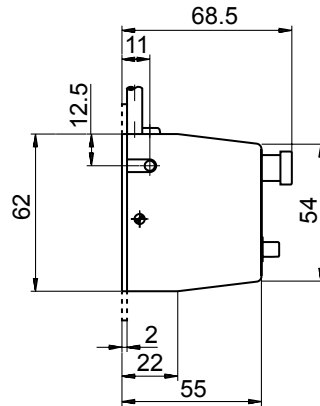
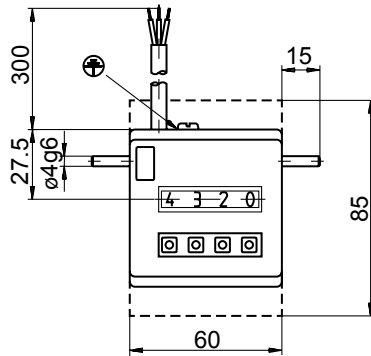
# Preset counters mechanic

Meter and revolution counters, subtracting  
Display 4-digits, manual reset by button

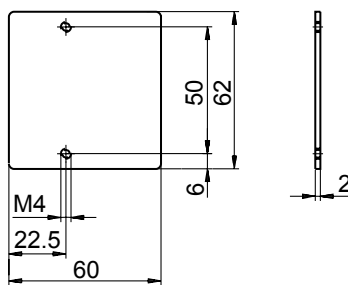
ME102, UE102

## Dimensions

### ME102, UE102



### Mounting plate ME102, UE102



### Mounting plate UE102

