

Preset counters mechanic

Meter and revolution counters, adding

Display 5 digits, manual reset by lever

ME280, UE280



ME280 - Meter counter



UE280 - Revolution counter

Technical data - electrical ratings

| | |
|--------------------|--|
| Preset | 2 presets |
| Preset setting | Press reset button and hold. Enter desired value in any order. Release reset button. |
| Limit switch | Trigger at preset 1 (adding) |
| Precontact | Trigger at preset 2 |
| Output contact | Change-over contact |
| Switching voltage | 230 VAC / VDC |
| Switching current | 2 A |
| Switching capacity | 100 VA / 30 W |
| Spark extinguisher | Recommended for inductive load |

Features

- Preset counter with one or two presets
- Meter or revolution counter
- Adding
- Display 5-digits
- Reset by lever

Technical data - mechanical design

| | |
|---------------------------|--|
| Number of digits | 5-digits |
| Digit height | 7 mm |
| Count mode | Adding in a rotational direction to be indicated, subtracting in reverse direction. See part number key |
| Drive shaft | Both sides, $\varnothing 7$ mm |
| Reset | By reset lever to preset value. Do not let snap lever or make jerky movements. |
| Ambient temperature | 0...+60 °C |
| Housing type | Surface mount housing |
| Housing colour | Grey |
| Dimensions W x H x L | 120 x 105 x 95 mm |
| Dimensions mounting plate | 158 x 105 mm |
| Mounting | Base plate, 4 mounting holes |
| Weight approx. | 1400 g |
| Material | Aluminium die cast alloy |
| Connection | Terminal block connector |

ME280

| | |
|--------------------|--|
| Function | Meter counter with preset |
| Display | White numbers on black Decimal digits in red |
| Measuring speed | 2 revs. = 1 digit = <3000 m/min 2 revs. = 10 di. = <300.0 m/min |
| Measuring accuracy | 1 m, 1 dm |
| Measuring range | 9 999.9 m and 99 999 m |

UE280

| | |
|-----------------|--------------------------------|
| Function | Revolution counter with preset |
| Display | White numbers on black |
| Operating speed | ≤6000 rpm |
| Measuring range | 99 999 |

Preset counters mechanic

Meter and revolution counters, adding Display 5 digits, manual reset by lever

ME280, UE280

Part number

Meter counter

ME280.0

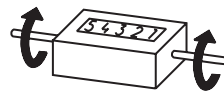
| | | |
|----|---|--|
| | | <u>Measuring range</u> |
| | A | 99 999 m |
| | B | 9999.9 m |
| | | <u>Count mode /Direction of rotation</u> |
| 07 | | 2 revs. = 10 digits / I |
| 08 | | 2 revs. = 10 digits / II |
| 13 | | 2 revs. = 1 digit / I |
| 14 | | 2 revs. = 1 digit / II |
| | | <u>Preset / reset</u> |
| 1 | | 1 preset / reset lever, permanent contact |
| 3 | | 2 presets / reset lever, permanent contact |

Revolution counter

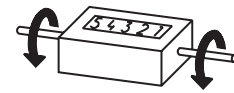
UE280.0

| | | |
|----|---|--|
| | | <u>Measuring range</u> |
| | A | 99 999 |
| | | <u>Count mode /Direction of rotation</u> |
| 11 | | 1 rev. = 1 digit / I |
| 12 | | 1 rev. = 1 digit / II |
| | | <u>Preset / reset</u> |
| 1 | | 1 preset / reset lever, permanent contact |
| 3 | | 2 presets / reset lever, permanent contact |

Direction of strokes and rotation



Away from user
Sense of rotation I



Towards user
Sense of rotation II

Accessories

Measuring wheels for ME280

| | |
|-----------|---|
| MR512.07A | Circumf. 50 cm, knurled aluminium |
| MR542.07D | Circumf. 50 cm, smooth Hytrel TPE-E |
| MR552.07A | Circumf. 50 cm, smooth Vulkollan PUR |
| MR562.07A | Circumf. 50 cm, knopped rubber NBR Nitril |
| MR592.07D | Circumf. 50 cm, grooved Hytrel TPE-E |

Dimensions

