

HEADERS FOR PCB.
CONNETTORI MASCHIO PER C.S.
CONNECTEURS MÂLE POUR C.I.
STIFTLISTE FÜR LEITERPLATTEN

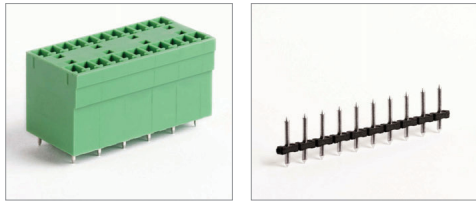
Pitch Passo	Passo Rastermaß	mm
Rated Voltage Tensione nominale	Rated Voltage Tensione nominale	V
Rated Current Intensità nominale	Rated Current Intensità nominale	A
Temperature Temperatura	Temperature Temperatura	°C
Housing Corpo isolante	Housing Corpo isolante	

IMQ	EN61984	
VDE	EN61984	
cUL	UL1059 + C22.2 n°158	
Poles Poli	Polzahl	X
Colors Colori	Colori	Y
Other informat Altre dati	Wenigere Informationen	P.

MRT33 P7.62 / X	... Y N...
Type Pitch Poles Version Colors Printing	Versione Colori Numerazione
Type Passo Poli Versione Colori Marquage	Versione Colori Marquage
Type Rastermaß Polzahl Versione Farben Bedruckung	Versione Farben Bedruckung

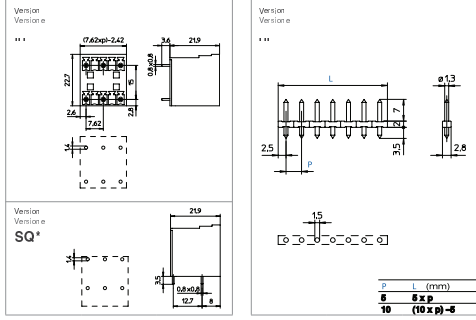
* SQ Version = Horizontal version

MRT33	MRT33..SQ*	CHM
Single block - Blocco unico Monobloc - Einzelblock	Single block - Blocco unico Monobloc - Einzelblock	Single block - Blocco unico Monobloc - Einzelblock
Poles - Poli - Pôles - Polzahl	2/6	Poles - Poli - Pôles - Polzahl
		2/24 (5) 2/12 (10)



7,62	5 - 10
500	250 - 630
10	10
110	110
PA - UL 94 V0	PA - UL 94 V0

V	A	mm²/AWG
300	8	30 + 16
min 2 - max 6		
VE		
D/B4		



CUM	CPM	CPM..SQ*	CPM..A	CPM..SQ*A
Single block - Blocco unico Monobloc - Einzelblock	Single block - Blocco unico Monobloc - Einzelblock	Single block - Blocco unico Monobloc - Einzelblock	Single block - Blocco unico Monobloc - Einzelblock	Single block - Blocco unico Monobloc - Einzelblock
Poles - Poli - Pôles - Polzahl	2/36 (5) 2/18 (10)	Poles - Poli - Pôles - Polzahl	2/24	Poles - Poli - Pôles - Polzahl
				2/24



5 - 10	5 - 5,08	5 - 5,08
250 - 500	320	320
16	20	20
85	110	110
PC - UL 94 V0	PA - UL 94 V0	PA - UL 94 V0

V	A	mm²/AWG
250 (5)	500 (10)	16
300	14	24 + 12
min 2 - max 36 (pitch 5) / max 18 (pitch 10)		
GR / on demand NE		
D/B4		

