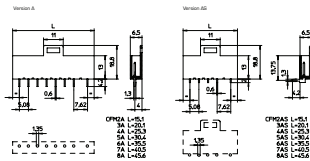


CFM WIRE TO BOARD SHROUDED HEADER



Features Friction lock single row header, mates with B595

Material PA UL94V0

Electrical Voltage 320 V
Current rating 4A

Mechanical Temperature rating: -30 °C to 85 °C

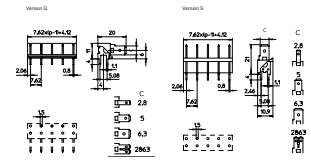
Product Code

| A | B | C | D |
|-----|-----|---|----|
| CFM | /Ax | x | GR |

B Number of contacts from 02 to 08

C A: straight
AS: right angle

CQ WIRE TO BOARD FAST - ON



Features Fast - on header 7.62 mm pitch
UL file number E150931

Material Insulator: PC UL94V0
Contact: FeP02
Plating Ni+Sn

Electrical Voltage 320 V
Current rating depending on contact shape C: 2.8=6A 5=10A 6.3=16 A 28x3=16 A max depending on cable size

Mechanical Temperature rating: -30 °C to 85 °C

Product Code

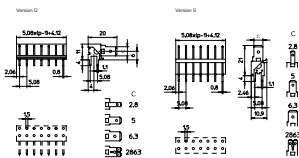
| A | B | C | D |
|-----|-----|----|----|
| CQx | /Bx | /x | NE |

A Version:
S: Straight
Q: Right angle

B Number of contacts from 02 to 11

C Terminal shape (see drawing)

CQ WIRE TO BOARD FAST - ON



Features Fast - on header 5.08 mm pitch
UL file number E150931

Material Insulator: PC UL94V0
Contact: FeP02
Plating Ni+Sn

Electrical Voltage 200 V
Current rating depending on contact shape C: 2.8=6A 5=10 A 6.3=16 A 28x3=16 A max depending on cable size

Mechanical Temperature rating: -30 °C to 85 °C

Product Code

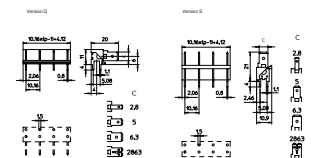
| A | B | C | D |
|-----|-----|----|----|
| CQx | /Ax | /x | NE |

A Version:
S: Straight
Q: Right angle

B Number of contacts from 02 to 17

C Terminal shape (see drawing)

CQ WIRE TO BOARD FAST - ON



Features Fast - on header 10.16 mm pitch
UL file number E150931

Material Insulator: PC UL94V0
Contact: FeP02
Plating Ni+Sn

Electrical Voltage 500 V
Current rating depending on contact shape C: 2.8=6A 5=10 A 6.3=16 A 28x3=16 A max depending on cable size

Mechanical Temperature rating: -30 °C to 85 °C

Product Code

| A | B | C | D |
|-----|-----|----|----|
| CQx | /Cx | /x | NE |

A Version:
S: Straight
Q: Right angle

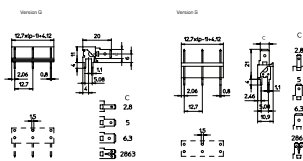
B Number of contacts from 02 to 09

C Terminal shape (see drawing)



CQ

WIRE TO BOARD FAST - ON



Features Fast - on header 12.7 mm pitch
UL file number E150931

Material Insulator: PC UL94V0
Contact: FePO2
Plating Ni+Sn

Electrical Voltage 330 V
Current rating depending on contact shape C 2.8=6A 5=10 A 6.3=16 A 2863=16 A max depending on cable size

Mechanical Temperature rating: -30 °C to 85 °C

Product Code

| A | B | C | D |
|-----|-----|----|----|
| CQx | /Dx | /x | NE |

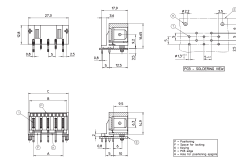
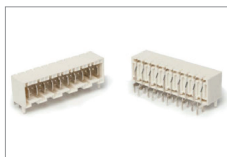
Version:
S Straight
Q Right angle

A Number of contacts from 02 to 07

B Terminal shape (see drawing)

RAST 5 90°

HEADER HORIZONTAL PTH



Features PCB male header, 90°, pitch 5 mm

Material Insulator: PA 66 ULV0 GWT-compliant
Contact: Brass Tin Plated

Electrical Current rating: 10 A
Dielectric withstanding: 250 V
Insulation resistance: 1000 Ω mini
Contact resistance: 10 mΩ max

Mechanical Temperature Range: -30 °C to 120 °C

Product Code

| A | B | C | D | E | F |
|------|----|----|----|-----|----|
| CTR1 | P5 | xx | SQ | Vyy | NA |

C Number of contacts from 02 to 12

D SQ: 90° version

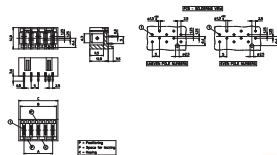
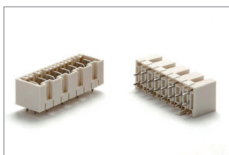
E Different version, depending on P-F-K

F NA: Natural colour of the plastic body

| Position | A | B | C |
|----------|-------|-------|-------|
| 02 | 5.00 | 10.20 | 12.30 |
| 03 | 10.00 | 15.20 | 17.30 |
| 04 | 15.00 | 20.20 | 22.30 |
| 05 | 20.00 | 25.20 | 27.30 |
| 06 | 25.00 | 30.20 | 32.30 |
| 07 | 30.00 | 35.20 | 37.30 |
| 08 | 35.00 | 40.20 | 42.30 |
| 09 | 40.00 | 45.20 | 47.30 |
| 10 | 45.00 | 50.20 | 52.30 |
| 11 | 50.00 | 55.20 | 57.30 |
| 12 | 55.00 | 60.20 | 62.30 |

RAST 5

HEADER VERTICAL PTH



Features PCB male header, 90°, pitch 5 mm

Material Insulator: PA 66 ULV0 GWT-compliant
Contact: Brass Tin Plated

Electrical Current rating: 10 A
Dielectric withstanding: 250 V
Insulation resistance: 1000 Ω mini
Contact resistance: 10 mΩ max

Mechanical Temperature Range: -30 °C to 120 °C

Product Code

| A | B | C | D | E |
|------|----|----|-----|----|
| CTR1 | P5 | xx | Vyy | NA |

C Number of contacts from 02 to 16

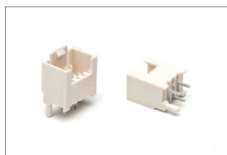
D Different version, depending on P-F-K

E NA: Natural colour of the plastic body

| Position | A | B | C |
|----------|-------|-------|-------|
| 02 | 5.00 | 10.20 | 12.30 |
| 03 | 10.00 | 15.20 | 17.30 |
| 04 | 15.00 | 20.20 | 22.30 |
| 05 | 20.00 | 25.20 | 27.30 |
| 06 | 25.00 | 30.20 | 32.30 |
| 07 | 30.00 | 35.20 | 37.30 |
| 08 | 35.00 | 40.20 | 42.30 |
| 09 | 40.00 | 45.20 | 47.30 |
| 10 | 45.00 | 50.20 | 52.30 |
| 11 | 50.00 | 55.20 | 57.30 |
| 12 | 55.00 | 60.20 | 62.30 |
| 13 | 60.00 | 65.20 | 67.30 |
| 14 | 65.00 | 70.20 | 72.30 |
| 15 | 70.00 | 75.20 | 77.30 |
| 16 | 75.00 | 80.20 | 82.30 |

RAST 2.5

HEADER VERTICAL PTH



NEW PRODUCT UNDER DEVELOPMENT, PLEASE CONTACT US FOR ANY REQUEST.

