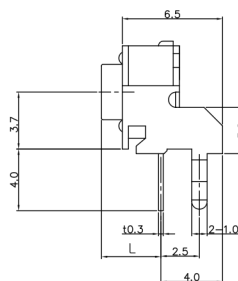
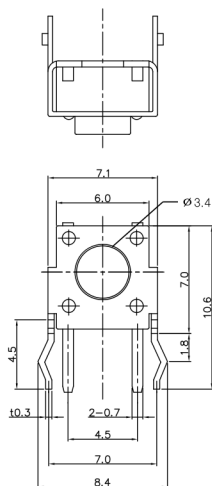


TACT SWITCH(DIP TYPE)

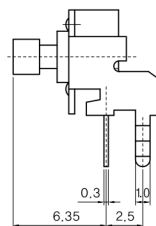
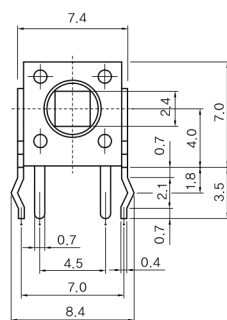
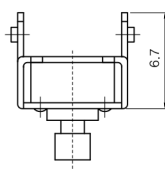
STP-1236



- 1. Rating : DC 12V, 50mA
- 2. Travel : 0.25±0.1m/m
- 3. Contact Resistance : 100mΩ Max.
- 4. Life : 80,000 Cycles
- 5. Operating Force : 160±50gf

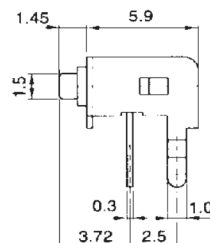
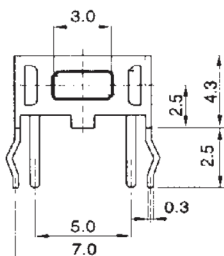
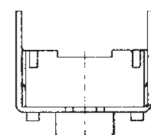
Model No.	STP1236	STP1236A	STP1236B	STP1236C	STP1236D	STP1236E	STP1236F	STP1236G	STP1236J
L	3.15	3.85	8.35	6.85	11.85	6.15	7.35	5.85	15.85

STP-1236T



- 1. Rating : DC 12V, 50mA
- 2. Travel : 0.25±0.1m/m
- 3. Operating Force : 160±50gf
- 4. Contact Resistance : 100mΩ Max.
- 5. Life : 80,000 Cycles

STP-1117



- 1. Rating : DC 12V, 50mA
- 2. Travel : 0.25± m/m
- 3. Operating Force : 180±50gf
- 4. Contact Resistance : 100mΩ Max.
- 5. Life : 50,000 Cycles

Model No.	Operating Force
STP 1117	180±50gf
STS 1117W	250±50gf