

INDICO D44 / D44 INDICO 95 / INDICO 95-LWEB LED / D44K/P01-LWWEB-AL

## Product Info

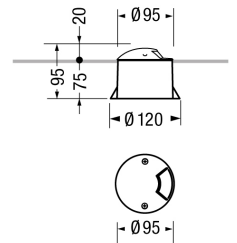


<b>Item code</b>	INDICO D44 / D44K/P01-LWWEB-AL
<b>Category</b>	Walk-over
<b>Environments</b>	urban landscape, façades and architectural works, wellness, hallway, conference hall, places of worship, residential lighting
<b>Mounting type</b>	with rough-in housing
<b>Mounting note</b>	On normally inflammable surfaces allowed.
<b>Body</b>	Corrosion resistant die-cast aluminium body and dome.
<b>Painting</b>	Polyester powder coating, with a pluri-processed against corrosion (passed the exposure of over 1500 hours in a saline mist environment).
<b>Screws</b>	AISI 304 stainless steel screws.
<b>Seals</b>	Silicone Rubber.
<b>Static load</b>	2000Kg
<b>Standard Colour</b>	AL   aluminium grey
<b>Option colors</b>	GR   graphite satin finish



## Dimensions

<b>Weight (kg)</b>	1.2
<b>D: Total diameter device (mm)</b>	95
<b>Volume piece packed (m³)</b>	5

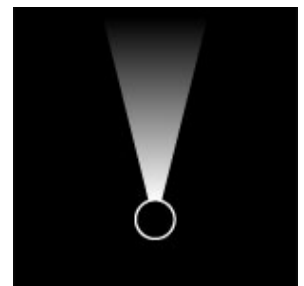


## Included Accessories

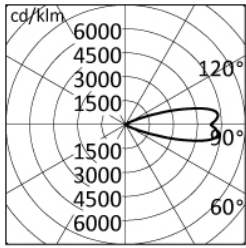
<b>Rough-in housing</b>	Ground and Wall rough-in housing box, high impact resistant composite technopolymer (Code PT0781).
-------------------------	--

## Optical System

<b>Diffuser</b>	Unbreakable UV-resistant polycarbonate.
<b>Beam</b>	ellittical
<b>Emission</b>	direct
<b>Adjustable</b>	Yes



## Photometrics



h (m)	∅ (m)	— $\gamma=0.0$ $\alpha=13^\circ$	∅ (m)	- - - $\gamma=0.0$ $\beta=43^\circ$	Emed (lx)
5.00	1.29		3.91		5
4.00	1.03		3.13		8
3.00	0.77		2.35		14
2.00	0.52		1.57		31
1.00	0.26		0.78		126

## Sources

<b>MacAdam</b>	Step 3
<b>Output Flux</b>	49 lm
<b>Source type</b>	LED
<b>System power</b>	2W
<b>Temperature Colour</b>	3000K CRI>80

## Electrical

<b>Ballast type</b>	ON-OFF.
<b>Frequency</b>	50-60Hz
<b>Lifetime</b>	60.000h L90B10 (Ta=25°C)
<b>Line input</b>	Pre-wired and tested with resin sealed watertight H07RN-F - H05RN-F (tellux/P01 model) cable (for a fast and secure connection to the main power line, use ACS/CR1 connector or similar).
<b>Mounting ballast type</b>	Integral
<b>Voltage</b>	220-240V
<b>Separate ignition</b>	No
<b>Emergency 1E</b>	No
<b>Emergency 3E</b>	No

## Optional Accessories

### Electrical

**ACS/CR1**

Fast IP68 connector 1bar (10m-1h) for cable Ø7-12mm - 3x1.5mm.

**ACS/CR6**

4 ways IP68 wiring box for cable Ø5-14mm - 3x1,5mm.