

HORO 2000 A/M



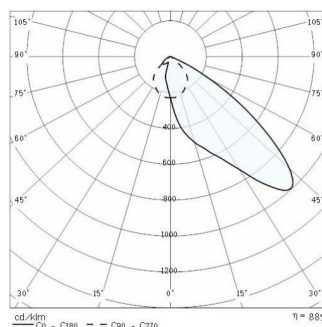
Part number	04022194
Lampholder:	cabie
Light Source:	METAL HALIDE LAMPS
Wattage:	1x2000 W
Finish:	GR-94 / Metallic grey / Textured
Insulation class:	I
Degree of protection:	IP 65
IK-J-xxIP:	IK09 12J xx7
Optic:	ASYMMETRIC MEDIUM REFLECTOR
Ta MIN luminaire:	-30°
Ta MAX luminaire:	25°



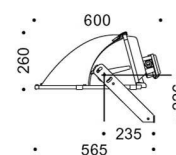
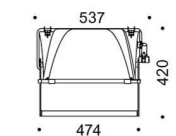
Description

- Discharge lamp floodlight for indoor and outdoor lighting, comprising:
- Die-cast aluminum housing chemically pre-treated and painted with polyester powder coating
 - Flat extra clear tempered glass diffuser
 - Extra pure polished aluminium reflectors
 - Anti-ageing silicone gasket
 - Automatic line isolator switch in LCP
 - Electrical connection box in black technopolymer
 - Ceramic lamp supports with stainless steel check spring
 - Stainless steel locking springs for the glass
 - Stainless steel external screws
 - Fully integrated stainless steel safety spring clips
 - Mounting bracket in hot dip galvanised steel
 - Patented anti-vacuum device
 - Adequate power supply units, available as accessories, must be used for all floodlights

PHOTOMETRIC DATA



TECHNICAL DRAWINGS



HORO 2000 HQI-TS D/S / HQI-TS N/L / MHN-LA / MHN-FC



14020601
Power supply unit 400 V - 50 Hz, class I, on galvanised steel plate for 2000W metal halide lamps (not for HQI-TS and HQI-TS High Flux) with fuse and without ignitor



14014420
Set including power supply unit and power-factor capacitor for 2000W HQI-TS 400V 50 Hz lamp

HORO 2000 HQI-TS N/L / MHN-LA / MHN-FC



14106003
Aluminium power supply unit IP65, 400 V - 50 Hz, class I, for 2000 W HQI-T / MHN-LA / MHN-FC / HQI-TS N/L metal halide lamps (not for HQI-TS and HQI-TS High Flux), without ignitor

HORO



14090394
External cowl in sheet aluminium, provides full cut off with peak beam max 55° and reduces upward light pollution.



14090494
External cowl in sheet aluminium, provides full cut off with peak beam max 60° and reduces upward light pollution.



14090594
External cowl in sheet aluminium, provides full cut off with peak beam max 65° and reduces upward light pollution.



14090202
Long mounting bracket in hot dipped galvanised steel suitable for use when mounting one floodlight above another to avoid interference of light distribution.



14159204
Horo viewfinder