

THEOS GLASS MINI SR/150



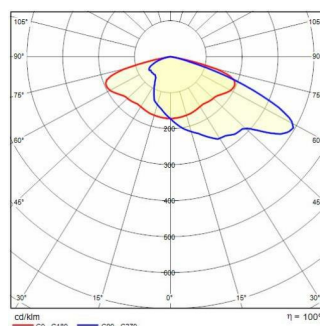
Part number	3105241
Lampholder:	LED
Light Source:	LED
Wattage:	35 W
Finish:	AN-96 / Anthracite gray / Textured
Insulation class:	II
Degree of protection:	IP66
IK-J-xxIP:	IK08 6J xx5
CRI:	70
Kelvin:	3000
Power factor:	$\text{COS}\phi \geq 0,9$
Optic:	ROAD REFLECTOR
Lightsource lumen output:	5091 lm
Luminaire lumen output:	4581 lm
L:	L90
B:	B10
Lifetime:	100000 h
Ta MIN luminaire:	-40°
Ta MAX luminaire:	55°
ULR:	0%
IPEA* (Street Lighting):	A6+
IPEA* (Area Lighting):	A7+
IPEA* (Cycle/Pedestrian Lighting):	A5+
IPEA* (Green Areas):	A5+
IPEA* (Historical Areas):	A10+
Luminous Intensity Class:	G*4



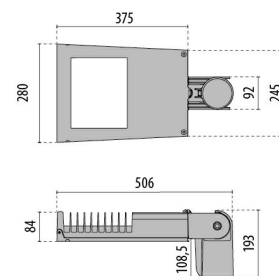
Description

- Series of LED road lighting luminaires, in two versions, comprising:
- Die-cast aluminium housing chemically pre-treated and painted with polyester powder coating
 - Die-cast aluminium trim ring, polyester-powder painted after chemical surface treatment, fully integrated and hinged to the housing
 - Painted die-cast aluminium pole-mounting joint for pole \varnothing 60 mm or 76 mm
 - High-transparency polycarbonate lenses for best light transmission
 - Optics available depending on the models: SR/075 for narrow roads with an L/H ratio (road width/pole height) between 0.5 and 0.75; SR/100 for two-lane roads and L/H ratio equal to 1; SR/125 for wide roads and L/H ratio equal to 1.25; SR/150 for wide roads and L/H ratio equal to 1.5
 - The "SECURE LIGHT DISTRIBUTION" system guarantees uniform light distribution even in the remote case of LED failures
 - Compliant with the UNI 10819 Standard and with the Italian regional laws on light pollution
 - High resiliency anti-ageing silicone gasket with high elastic return capacity
 - Flat extra clear tempered glass diffuser
 - Automatic line isolator switch that cuts off power supply when ring is opened
 - High efficiency electronic driver
 - Complete with supplementary device for protection against network surges of up to 10 kV (DM)

Photometric data



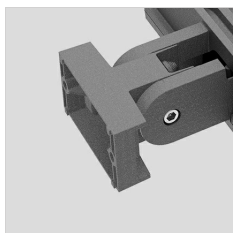
Technical drawings



- Electrical connection with outdoor rated plug & socket quick connector (IP66), complete with cable, that allows connection to mains without opening the luminaire. Made in PA66 with silver-plated brass contacts, for cables Ø 9 - Ø 12 mm
- Stainless steel external screws
- Consult factory for other colour temperatures and colour rendering index
- Consult factory for 7-pin NEMA socket options for external control systems connection.
- CLO (Constant light output) option available. Consult Factory
- Photometric data measure according to UNI EN 13032-4 and IES LM-79-08

OPTIONAL ACCESSORIES

THEOS GLASS



14174796
Wall mount bracket THEOS
Anthracite gray



14077796
Hot-dipped galvanized wall angled
steel bracket, cataphoresis and
polyester powder
Anthracite gray