

## THEOS GLASS SR/075



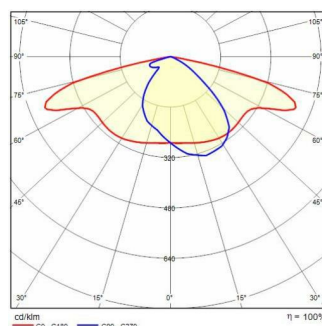
<b>Part number</b>	306430
<b>Lampholder:</b>	LED
<b>Light Source:</b>	LED
<b>Wattage:</b>	104 W
<b>Finish:</b>	AN-96 / Anthracite gray / Textured
<b>Insulation class:</b>	II
<b>Degree of protection:</b>	IP66
<b>IK-J-xxIP:</b>	IK08 9J xx5
<b>CRI:</b>	70
<b>Kelvin:</b>	4000
<b>Power factor:</b>	$\text{COS}\phi \geq 0,9$
<b>Optic:</b>	ROAD REFLECTOR
<b>Lightsource lumen output:</b>	16294 lm
<b>Luminaire lumen output:</b>	13892 lm
<b>L:</b>	L70
<b>B:</b>	B10
<b>Lifetime:</b>	72000 h
<b>Ta MIN luminaire:</b>	-40°
<b>Ta MAX luminaire:</b>	55°
<b>ULR:</b>	0%
<b>IPEA* (Street Lighting):</b>	A5+
<b>IPEA* (Area Lighting):</b>	A8+
<b>IPEA* (Cycle/Pedestrian Lighting):</b>	A4+
<b>IPEA* (Green Areas):</b>	A4+
<b>IPEA* (Historical Areas):</b>	A9+
<b>Luminous Intensity Class:</b>	G*4



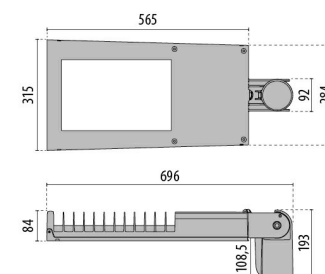
### Description

- Series of LED road lighting luminaires, in two versions, comprising:
- Die-cast aluminium housing chemically pre-treated and painted with polyester powder coating
  - Die-cast aluminium trim ring, polyester-powder painted after chemical surface treatment, fully integrated and hinged to the housing
  - Die-cast aluminium pole-mounting joint, painted grey, for pole  $\varnothing$  60 mm or 76 mm
  - Flat extra clear tempered glass diffuser
  - High-transparency polycarbonate lenses for best light transmission
  - Optics available depending on the models: SR/075 for narrow roads with an L/H ratio (road width/pole height) between 0.5 and 0.75; SR/100 for two-lane roads and L/H ratio equal to 1; SR/125 for wide roads and L/H ratio equal to 1.25; SR/150 for wide roads and L/H ratio equal to 1.5
  - Anti-aging silicone gasket with high resiliency
  - Cable gland M20x1.5 for cables  $\varnothing$  10-  $\varnothing$  14 mm
  - Automatic line isolator switch that cuts off power supply when ring is opened
  - High efficiency electronic driver
  - Versions are available with ON-OFF driver and dimmable DALI
  - Compliant with the UNI 10819 Standard and with the Italian regional laws on light pollution
  - Stainless steel external screws
  - Complete with supplementary device for protection against network surges of up to 10

### Photometric data



### Technical drawings

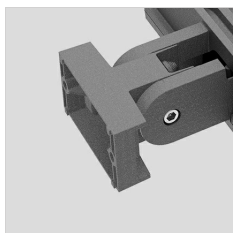


kV (DM)

- The "SECURE LIGHT DISTRIBUTION" system guarantees uniform light distribution even in the remote case of LED failures
- Versions with automatic power reduction available
- All versions are available with 3000K LEDs on request
- Other colour temperatures and colour renderings are available upon request
- Photometric data measure according to UNI EN 13032-4 and IES LM-79-08
- Photometric data measure according to UNI EN 13032-4 and IES LM-79-08

## OPTIONAL ACCESSORIES

### THEOS GLASS



14174796  
Wall mount bracket THEOS



14077796  
Hot-dipped galvanized wall angled  
steel bracket, cataphoresis and  
polyester powder