

# THEOS GLASS SR/150



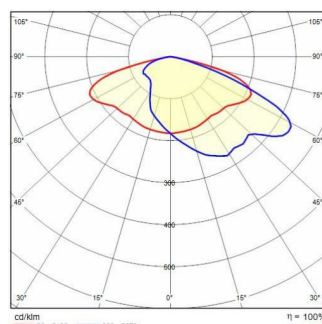
|   |                                    |
|---|------------------------------------|
| <b>Part number</b>                        | 306457                             |
| <b>Lampholder:</b>                        | LED                                |
| <b>Light Source:</b>                      | LED                                |
| <b>Wattage:</b>                           | 104 W                              |
| <b>Finish:</b>                            | AN-96 / Anthracite gray / Textured |
| <b>Insulation class:</b>                  | II                                 |
| <b>Degree of protection:</b>              | IP66                               |
| <b>IK-J-xxIP:</b>                         | IK08 9J xx5                        |
| <b>CRI:</b>                               | 70                                 |
| <b>Kelvin:</b>                            | 4000                               |
| <b>Power factor:</b>                      | $\text{COS}\phi \geq 0,9$          |
| <b>Optic:</b>                             | ROAD REFLECTOR                     |
| <b>Lightsource lumen output:</b>          | 16294 lm                           |
| <b>Luminaire lumen output:</b>            | 13456 lm                           |
| <b>L:</b>                                 | L70                                |
| <b>B:</b>                                 | B10                                |
| <b>Lifetime:</b>                          | 72000 h                            |
| <b>Ta MIN luminaire:</b>                  | -40°                               |
| <b>Ta MAX luminaire:</b>                  | 55°                                |
| <b>ULR:</b>                               | 0%                                 |
| <b>IPEA* (Street Lighting):</b>           | A4+                                |
| <b>IPEA* (Area Lighting):</b>             | A7+                                |
| <b>IPEA* (Cycle/Pedestrian Lighting):</b> | A4+                                |
| <b>IPEA* (Green Areas):</b>               | A4+                                |
| <b>IPEA* (Historical Areas):</b>          | A8+                                |
| <b>Luminous Intensity Class:</b>          | G*4                                |



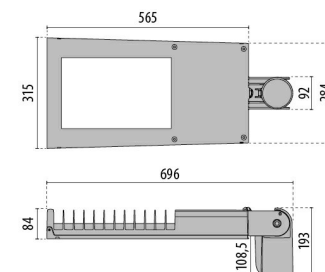
## Description

- Series of LED road lighting luminaires, in two versions, comprising:
- Die-cast aluminium housing chemically pre-treated and painted with polyester powder coating
  - Die-cast aluminium trim ring, polyester-powder painted after chemical surface treatment, fully integrated and hinged to the housing
  - Die-cast aluminium pole-mounting joint, painted grey, for pole  $\varnothing$  60 mm or 76 mm
  - Flat extra clear tempered glass diffuser
  - High-transparency polycarbonate lenses for best light transmission
  - Optics available depending on the models: SR/075 for narrow roads with an L/H ratio (road width/pole height) between 0.5 and 0.75; SR/100 for two-lane roads and L/H ratio equal to 1; SR/125 for wide roads and L/H ratio equal to 1.25; SR/150 for wide roads and L/H ratio equal to 1.5
  - Anti-aging silicone gasket with high resiliency
  - Cable gland M20x1.5 for cables  $\varnothing$  10-  $\varnothing$  14 mm
  - Automatic line isolator switch that cuts off power supply when ring is opened
  - High efficiency electronic driver
  - Versions are available with ON-OFF driver and dimmable DALI
  - Compliant with the UNI 10819 Standard and with the Italian regional laws on light pollution
  - Stainless steel external screws
  - Complete with supplementary device for protection against network surges of up to 10

## Photometric data



## Technical drawings

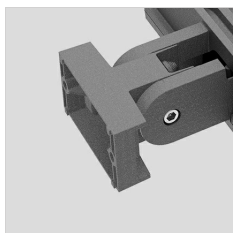


kV (DM)

- The "SECURE LIGHT DISTRIBUTION" system guarantees uniform light distribution even in the remote case of LED failures
- Versions with automatic power reduction available
- All versions are available with 3000K LEDs on request
- Other colour temperatures and colour renderings are available upon request
- Photometric data measure according to UNI EN 13032-4 and IES LM-79-08
- Photometric data measure according to UNI EN 13032-4 and IES LM-79-08

## OPTIONAL ACCESSORIES

### THEOS GLASS



14174796  
Wall mount bracket THEOS



14077796  
Hot-dipped galvanized wall angled  
steel bracket, cataphoresis and  
polyester powder