

THEOS GLASS SR/100



Part number	306460
Lampholder:	LED
Light Source:	LED
Wattage:	136 W
Finish:	AN-96 / Anthracite gray / Textured
Insulation class:	II
Degree of protection:	IP66
IK-J-xxIP:	IK08 9J xx5
CRI:	70
Kelvin:	4000
Power factor:	$\cos\phi \geq 0,9$
Optic:	ROAD REFLECTOR
Lightsource lumen output:	21726 lm
L:	L70
B:	B10
Lifetime:	72000 h
Ta MIN luminaire:	-40°
Ta MAX luminaire:	50°
ULR:	0%
IPEA* (Street Lighting):	A4+
IPEA* (Area Lighting):	A8+
IPEA* (Cycle/Pedestrian Lighting):	A4+
IPEA* (Green Areas):	A4+
IPEA* (Historical Areas):	A10+
Luminous Intensity Class:	G*4

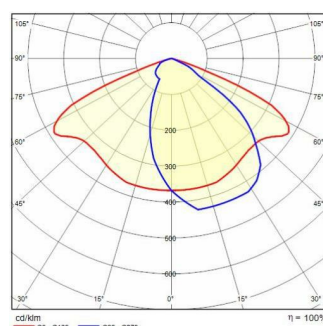


Description

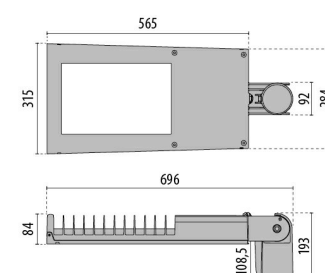
Series of LED road lighting luminaires, in two versions, comprising:

- Die-cast aluminium housing chemically pre-treated and painted with polyester powder coating
- Die-cast aluminium trim ring, polyester-powder painted after chemical surface treatment, fully integrated and hinged to the housing
- Die-cast aluminium pole-mounting joint, painted grey, for pole Ø 60 mm or 76 mm
- Flat extra clear tempered glass diffuser
- High-transparency polycarbonate lenses for best light transmission
- Optics available depending on the models: SR/075 for narrow roads with an L/H ratio (road width/pole height) between 0.5 and 0.75; SR/100 for two-lane roads and L/H ratio equal to 1; SR/125 for wide roads and L/H ratio equal to 1.25; SR/150 for wide roads and L/H ratio equal to 1.5
- Anti-aging silicone gasket with high resiliency
- Cable gland M20x1.5 for cables Ø 10- Ø 14 mm
- Automatic line isolator switch that cuts off power supply when ring is opened
- High efficiency electronic driver
- Versions are available with ON-OFF driver and dimmable DALI
- Compliant with the UNI 10819 Standard and with the Italian regional laws on light pollution
- Stainless steel external screws
- Complete with supplementary device for protection against network surges of up to 10 kV (DM)

Photometric data



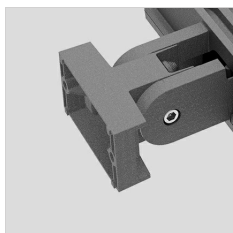
Technical drawings



- The "SECURE LIGHT DISTRIBUTION" system guarantees uniform light distribution even in the remote case of LED failures
- Versions with automatic power reduction available
- All versions are available with 3000K LEDs on request
- Other colour temperatures and colour renderings are available upon request
- Photometric data measure according to UNI EN 13032-4 and IES LM-79-08
- Photometric data measure according to UNI EN 13032-4 and IES LM-79-08

OPTIONAL ACCESSORIES

THEOS GLASS



14174796
Wall mount bracket THEOS



14077796
Hot-dipped galvanized wall angled
steel bracket, cathodization and
polyester powder