

THEOS GLASS MINI SR/100



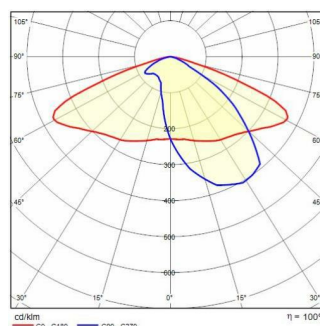
Part number	3101912
Lampholder:	LED
Light source:	LED
Wattage:	58 W
Finishing:	AN-96 / Anthracite gray / Textured
Insulation class:	II
IP degree of protection:	IP66
IK-J-xxIP:	IK08 6J xx5
CRI:	70
Kelvin:	4000
Power factor / COS Φ:	>0.9
Optic:	Road reflector
Lightsource lumen output (lm):	9021 lm
Luminaire lumen output (lm):	8291 lm
L:	L90
B:	B10
Lifetime:	100000 h
Min. ambient temperature (°C):	-40
Max. ambient temperature (°C):	55
ULR light pollution (%):	0%
IPEA* (road lighting):	A8+
IPEA* (large areas, roundabouts):	A9+
IPEA* (cycle-pedestrian):	A8+
IPEA* (green areas):	A8+
IPEA* (historic city centers):	A12+
Luminous Intensity Class:	G*2



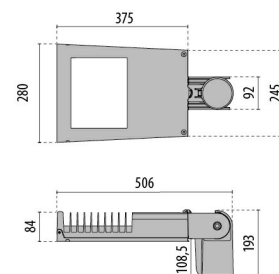
Description

- Series of LED street lighting luminaires, in two sizes, comprising:
- Die-cast aluminium housing, powder-polyester coated ISO 9227
 - Die-cast aluminium trim ring, polyester-powder painted after chemical surface treatment, fully integrated and hinged to the housing
 - Painted die-cast aluminium pole-top adaptor for pole Ø 60 / 76 mm
 - High-transparency polycarbonate lenses grant an optimized light transmission
 - The "SECURE LIGHT DISTRIBUTION" system guarantees uniform light distribution even in the remote case of LED failures
 - High resiliency anti-ageing silicone gasket with high elastic return capacity
 - Extra clear, tempered, flat glass diffuser
 - Switch splitter automatically disconnects the power supply when the cable cover is opened
 - Built-in driver
 - Integral surge protection device (SPD) against mains overvoltages up to 10 kV
 - Stainless steel external screws
 - Complete with 1 meter H07RN-F 2x1.5 mm² or H07RN-F 4x1.5 mm² cable for dimmable versions, which allows connection to the mains without opening the luminaire
 - Optics available: SR/075 for narrow roads with an L/H ratio (road width/pole height) between 0.5 and 0.75; SR/100 for two-lane roads and L/H ratio equal to 1; SR/125 for wide roads and L/H ratio equal to 1.25; SR/150 for wide roads and L/H ratio equal to 1.5
 - Compliant with the UNI 10819 standards on light pollution

Photometric data



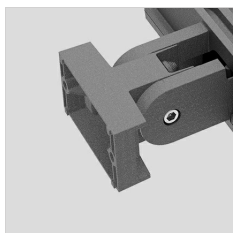
Technical drawings



- For other colour temperatures and different colour rendering index consult factory
- Consult factory for 7-pin NEMA socket options for external control systems connection
- CLO (Constant light output) option available. Consult factory
- Design by SILVIA PAOLA PENNACCHIO
- Photometric data measure according to UNI EN 13032-4 and IES LM-79-08

OPTIONAL ACCESSORIES

THEOS GLASS



14174796
Wall mount bracket THEOS
Anthracite gray



14077796
Hot-dipped galvanized wall angled
steel bracket, cataphoresis and
polyester powder
Anthracite gray

