

THEOS GLASS MINI SR/075



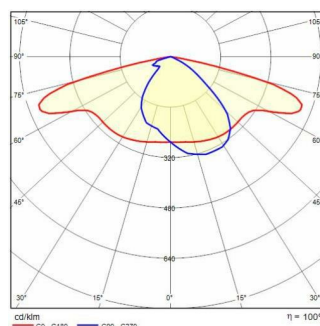
Part number	3105171
Lampholder:	LED
Light Source:	LED
Wattage:	19 W
Finish:	AN-96 / Anthracite gray / Textured
Insulation class:	II
Degree of protection:	IP66
IK-J-xxIP:	IK08 6J xx5
CRI:	70
Kelvin:	3000
Power factor:	$\text{COS}\phi \geq 0,9$
Optic:	Road reflector
Lightsource lumen output:	2806 lm
Luminaire lumen output:	2633 lm
L:	L90
B:	B10
Lifetime:	100000 h
Ta MIN luminaire:	-40°
Ta MAX luminaire:	55°
ULR:	0%
IPEA* (Street Lighting):	A7+
IPEA* (Area Lighting):	A8+
IPEA* (Cycle/Pedestrian Lighting):	A7+
IPEA* (Green Areas):	A7+
IPEA* (Historical Areas):	A12+
Luminance Intensity Class:	G*3



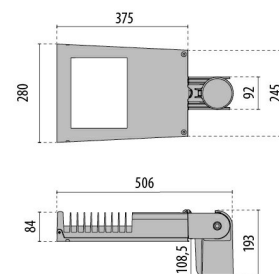
Description

- Series of LED street lighting luminaires, in two sizes, comprising:
- Die-cast aluminium housing, powder-polyester coated ISO 9227
 - Die-cast aluminium trim ring, polyester-powder painted after chemical surface treatment, fully integrated and hinged to the housing
 - Painted die-cast aluminium pole-top adaptor for pole \varnothing 60 / 76 mm
 - High-transparency polycarbonate lenses grant an optimized light transmission
 - The "SECURE LIGHT DISTRIBUTION" system guarantees uniform light distribution even in the remote case of LED failures
 - High resiliency anti-ageing silicone gasket with high elastic return capacity
 - Extra clear, tempered, flat glass diffuser
 - Switch splitter automatically disconnects the power supply when the cable cover is opened
 - Built-in driver
 - Integral surge protection device (SPD) against mains overvoltages up to 10 kV
 - Stainless steel external screws
 - Complete with 1 meter H07RN-F 2x1.5 mm² or H07RN-F 4x1.5 mm² cable for dimmable versions, which allows connection to the mains without opening the luminaire
 - Optics available: SR/075 for narrow roads with an L/H ratio (road width/pole height) between 0.5 and 0.75; SR/100 for two-lane roads and L/H ratio equal to 1; SR/125 for wide roads and L/H ratio equal to 1.25; SR/150 for wide roads and L/H ratio equal to 1.5
 - Compliant with the UNI 10819 standards on light pollution

Photometric data



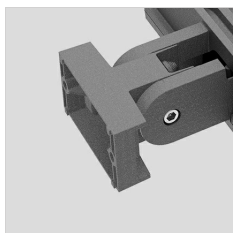
Technical drawings



- For other colour temperatures and different colour rendering index consult factory
- Consult factory for 7-pin NEMA socket options for external control systems connection
- CLO (Constant light output) option available. Consult factory
- Photometric data measure according to UNI EN 13032-4 and IES LM-79-08

OPTIONAL ACCESSORIES

THEOS GLASS



14174796
Wall mount bracket THEOS
Anthracite gray



14077796
Hot-dipped galvanized wall angled
steel bracket, cataphoresis and
polyester powder
Anthracite gray