

# THEOS GLASS MINI SR/100



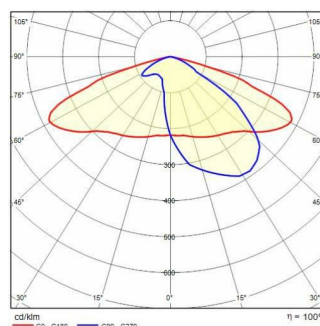
<b>Part number</b>	3105187
<b>Lampholder:</b>	LED
<b>Light source:</b>	LED
<b>Wattage:</b>	35 W
<b>Finishing:</b>	AN-96 / Anthracite gray / Textured
<b>Insulation class:</b>	II
<b>IP degree of protection:</b>	IP66
<b>IK-J-xxIP:</b>	IK08 6J xx5
<b>CRI:</b>	70
<b>Colour temperature:</b>	3000
<b>Power factor / COS Φ:</b>	>0.9
<b>Optic:</b>	Road reflector
<b>Lightsource lumen output (lm):</b>	5091 lm
<b>Luminaire lumen output (lm):</b>	4903 lm
<b>L:</b>	L90
<b>B:</b>	B10
<b>Lifetime:</b>	100000 h
<b>Min. ambient temperature (°C):</b>	-40
<b>Max. ambient temperature (°C):</b>	55
<b>ULR light pollution (%):</b>	0%
<b>IPEA* (road lighting):</b>	A8+
<b>IPEA* (large areas, roundabouts):</b>	A9+
<b>IPEA* (cycle-pedestrian):</b>	A7+
<b>IPEA* (green areas):</b>	A7+
<b>IPEA* (historic city centers):</b>	A12+
<b>Luminous Intensity Class:</b>	G*4



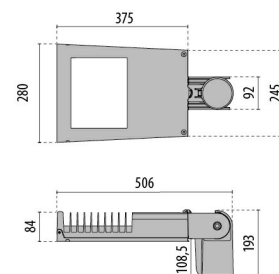
## Description

- Series of LED street lighting luminaires, in two sizes, comprising:
- Die-cast aluminium housing, powder-polyester coated ISO 9227
  - Die-cast aluminium trim ring, polyester-powder painted after chemical surface treatment, fully integrated and hinged to the housing
  - Painted die-cast aluminium pole-top adaptor for pole Ø 60 / 76 mm
  - High-transparency polycarbonate lenses grant an optimized light transmission
  - The "SECURE LIGHT DISTRIBUTION" system guarantees uniform light distribution even in the remote case of LED failures
  - High resiliency anti-ageing silicone gasket with high elastic return capacity
  - Extra clear, tempered, flat glass diffuser
  - Switch splitter automatically disconnects the power supply when the cable cover is opened
  - Built-in driver
  - Integral surge protection device (SPD) against mains overvoltages up to 10 kV
  - Stainless steel external screws
  - Complete with 1 meter H07RN-F 2x1.5 mm<sup>2</sup> or H07RN-F 4x1.5 mm<sup>2</sup> cable for dimmable versions, which allows connection to the mains without opening the luminaire
  - Optics available: SR/075 for narrow roads with an L/H ratio (road width/pole height) between 0.5 and 0.75; SR/100 for two-lane roads and L/H ratio equal to 1; SR/125 for wide roads and L/H ratio equal to 1.25; SR/150 for wide roads and L/H ratio equal to 1.5
  - Compliant with the UNI 10819 standards on light pollution

## Photometric data



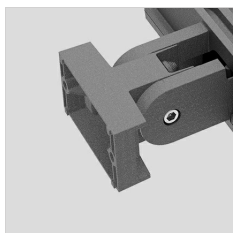
## Technical drawings



- For other colour temperatures and different colour rendering index consult factory
- Consult factory for 7-pin NEMA socket options for external control systems connection
- CLO (Constant light output) option available. Consult factory
- Design by SILVIA PAOLA PENNACCHIO
- Photometric data measure according to UNI EN 13032-4 and IES LM-79-08

## OPTIONAL ACCESSORIES

### THEOS GLASS



14174796  
Wall mount bracket THEOS  
Anthracite gray



14077796  
Hot-dipped galvanized wall angled  
steel bracket, cataphoresis and  
polyester powder  
Anthracite gray

