

IEC Appliance Inlet C14 with Filter, Fuseholder 1- or 2-pole, Line Switch 2-pole

new



Screw-on mounting horizontal (version B)  
Order required accessories separately



Screw-on mounting vertical (version A)



Snap-in mounting



70° C

See below:

[Approvals and Compliances](#)

## Description

- Panel mount :  
Screw-on from front side
- 4 Functions :  
Appliance Inlet Protection class I , Line Switch 2-pole , Fuseholder for fuse-links 5 x 20 mm 1- or 2-pole , Line filter in standard and medical version
- V-Lock notch standard
- Quick connect terminals 6.3 x 0.8 mm

## Unique Selling Proposition

- Various mounting options
- Attractive flat design
- Switch for highest inrush current
- V-Lock cord retaining

## Characteristics

- Ultra-compact design. Ideal for low profile designs
- Aluminum case provides good shielding
- All single elements are already wired
- Fuse drawer meets requirements of medical standard IEC/EN 60601-1
- Ideal for application with high transient loads
- Suitable for use in equipment according to IEC/UL 60950
- Suitable for use in medical equipment according to IEC/UL 60601-1

## Other versions on request

- Solder terminals
- Fuse drawer 1-pole, plus spare fuse case
- Fuse drawer 2-pole, with shorting bar
- Other rocker marking
- Line switch, illuminated
- Line switch 1-pole
- Medical version M80
- Class X1- and Y1-capacitors for enhanced withstand voltage

## References

Alternative: version without line filter [DD11](#)  
Alternative: version for snap-in mounting [KMF](#)  
Alternative: version with 2-stage filter [DD14](#)

## Weblinks

[pdf data sheet](#), [html data sheet](#), [General Product Information](#),  
[Distributor-Stock-Check](#), [Accessories](#), [Detailed request for product](#),  
[Landing Page](#)

## Technical Data

Ratings IEC	1 - 10A @ Ta 40 °C / 250VAC; 50Hz
Ratings UL/CSA	1 - 8A @ Ta 40 °C / 250VAC; 60Hz
Leakage Current	standard < 0.5mA (250V / 60Hz) medical < 5 µA (250 V / 60 Hz)
Dielectric Strength	> 1.7 kVDC between L-N > 2.7 kVDC between L/N-PE Test voltage (2 sec)
Allowable Operation Temperature	-25 °C to 85 °C
Climatic Category	25/085/21 acc. to IEC 60068-1
IP-Protection	from front side IP40 acc. to IEC 60529
Protection Class	Suitable for appliances with protection class I acc. to IEC 61140
Terminal	Quick connect terminals 6.3 x 0.8 mm
Panel Thickness S	Screw-on mounting: max 8mm Mounting screw torque max 0.5Nm Snap-in: 1 mm to 3mm
Material: Housing	Thermoplastic, black, UL 94V-0

appliance inlet/-outlet	C14 acc. to IEC 60320-1 UL 498, CSA C22.2 no. 42 (for cold conditions) pin-temperature 70 °C, 10A, Protection Class I
Fuseholder	1 or 2 pole, Shocksafe category PC2 acc. to IEC 60127-6, for fuse-links 5 x 20mm
Rated Power Acceptance @ Ta 23 °C	5 x 20: 2W (1 pole)/ 1.6W (2-pole) per pole
Power Acceptance @ Ta > 23°C	Admissible power acceptance at higher ambient temperature see derating curves
Line Switch	Rocker switch 2-pole, non-illuminated, acc. to IEC 61058-1 <a href="#">Technical Details</a>
Line Filter	Standard and Medical Version, IEC 60939, UL 1283, CSA C22.2 no. 8 <a href="#">Technical Details</a>
MTBF	> 2'000'000h acc. to MIL-HB-217 F

## Approvals and Compliances



Detailed information on product approvals, code requirements, usage instructions and detailed test conditions can be looked up in [Details about Approvals](#)

SCHURTER products are designed for use in industrial environments. They have approvals from independent testing bodies according to national and international standards. Products with specific characteristics and requirements such as required in the automotive sector according to IATF 16949, medical technology according to ISO 13485 or in the aerospace industry can be offered exclusively with customer-specific, individual agreements by SCHURTER.

## Approvals









The approval mark is used by the testing authorities to certify compliance with the safety requirements placed on electronic products.

Approval Reference Type: DD12

Approval Logo	Certificates	Certification Body	Description
	<a href="#">VDE Approvals</a>	VDE	Certificate Number: 40001522
	<a href="#">UL Approvals</a>	UL	UL File Number: E72928




## Product standards

Product standards that are referenced

Organization	Design	Standard	Description
	Designed according to	IEC 60320-1	Appliance couplers for household and similar general purposes
	Designed according to	IEC 60939	Passive filters for suppressing electromagnetic interference
	Designed according to	IEC 60127-6	Miniature fuses. Part 6. Fuse-holders for miniature fuse-links
	Designed according to	IEC 61058-1	Switches for appliances. Part 1. General requirements
	Designed according to	UL 498	Standard for Attachment Plugs and Receptacles
	Designed according to	UL 1283	Electromagnetic interference filters
	Designed according to	CSA C22.2 no. 42	General Use Receptacles, Attachment Plugs, and Similar Wiring Devices
	Designed according to	CSA C22.2 no. 8	Electromagnetic interference (EMI) filters

## Application standards

Application standards where the product can be used

Organization	Design	Standard	Description
	Designed for applications acc.	IEC/UL 60950	IEC 60950-1 includes the basic requirements for the safety of information technology equipment.
	Designed for applications acc.	IEC 60601-1	Medical electrical equipment - Part 1: General requirements for basic safety and essential performance
	Designed for applications acc.	IEC 60335-1	Safety of electrical appliances for household and similar purposes. Meets the requirements for appliances in unattended use. This includes the enhanced requirements of glow wire tests acc. to IEC 60695-2-11 or -12 & -13.

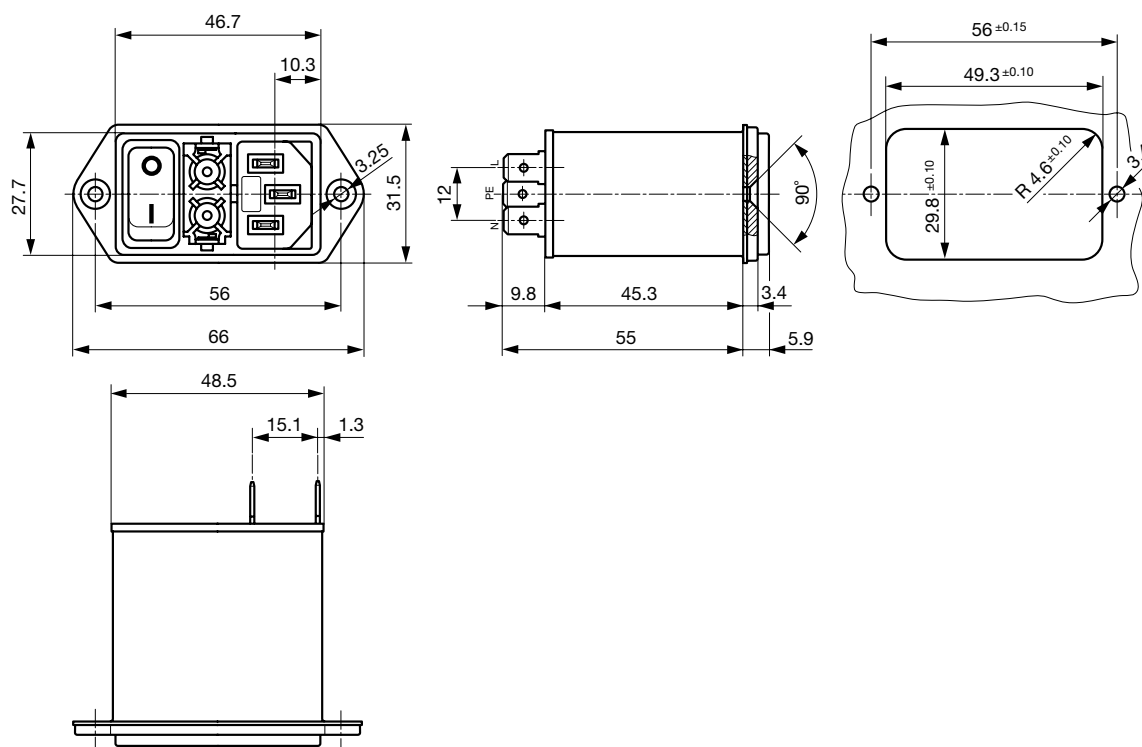
## Compliances

The product complies with following Guide Lines

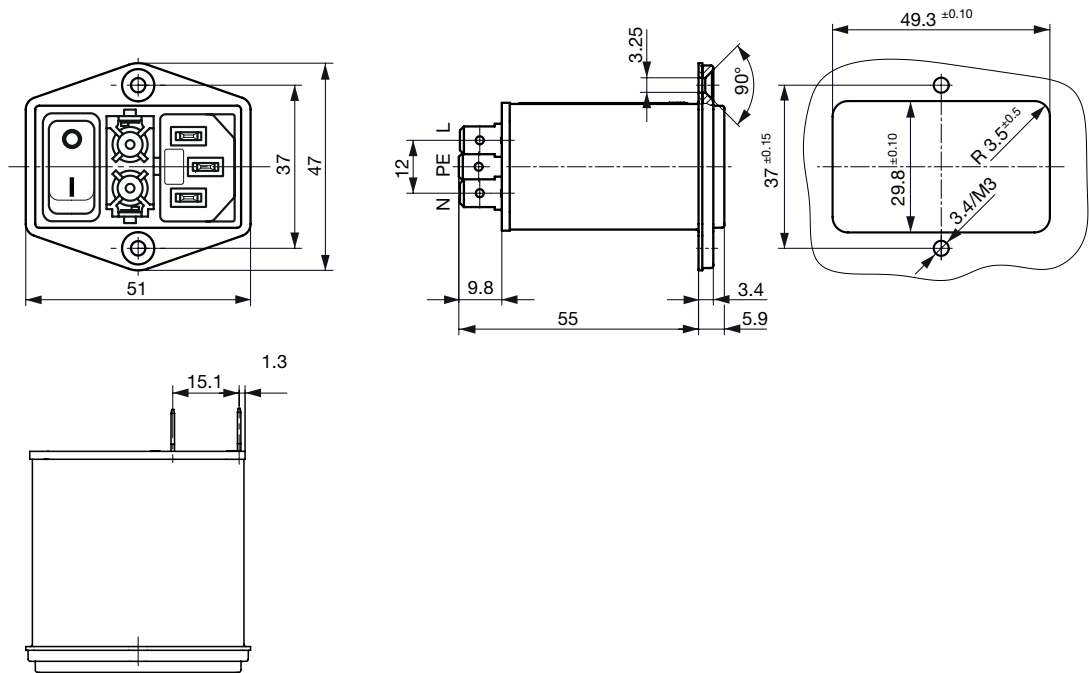
Identification	Details	Initiator	Description
CE	CE declaration of conformity	SCHURTER AG	The CE marking declares that the product complies with the applicable requirements laid down in the harmonisation of Community legislation on its affixing in accordance with EU Regulation 765/2008.
RoHS	RoHS	SCHURTER AG	Directive RoHS 2011/65/EU, Amendment (EU) 2015/836
e	China RoHS	SCHURTER AG	The law SJ / T 11363-2006 (China RoHS) has been in force since 1 March 2007. It is similar to the EU directive RoHS.
REACH	REACH	SCHURTER AG	On 1 June 2007, Regulation (EC) No 1907/2006 on the Registration, Evaluation, Authorization and Restriction of Chemicals 1 (abbreviated as "REACH") entered into force.
V-Lock		SCHURTER AG	V-Lock system are based on a matching plug-dose combination. The connector is equipped with a notch intended for use with the latching cordset. The cord latching system prevents against accidental removal of the cordset.
00	White paper Glow wire test	SCHURTER AG	Meets the requirements of IEC 60335-1 for appliances in unattended use. This includes the enhanced requirements of glow wire tests acc. to IEC 60695-2-11 or -12 &-13.
T	Medical Equipment	SCHURTER AG	Suitable for use in medical equipment according to IEC/UL 60601-1

## Dimensions [mm]

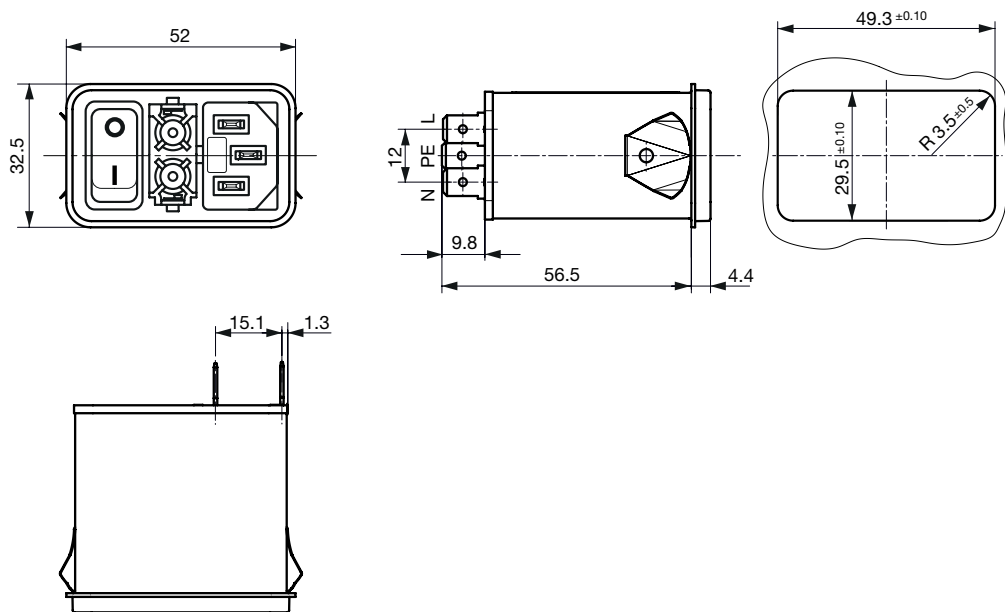
Screw version A



Screw version B



Snap-in mounting from front side

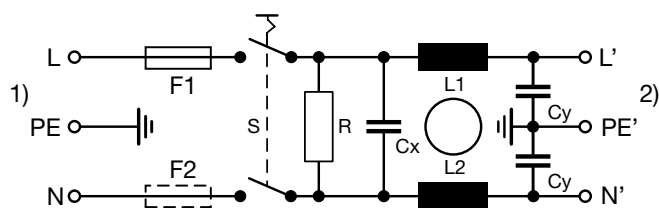


## Technical Data of Filter-Components

Rated Current [A]	Filter-Type	Inductance L1/ L2 [mH]	Inductance L3 [mH]	Capacitance CX [nF]	Capacitance CY [nF]	R [MΩ]
1	Standard Version	2 x 10	-	100	2.2	1
2	Standard Version	2 x 4	-	100	2.2	1
4	Standard Version	2 x 1.5	-	100	2.2	1
6	Standard Version	2 x 0.8	-	100	2.2	1
8	Standard Version	2 x 0.6	-	100	2.2	1
10	Standard Version	2 x 0.3	-	100	2.2	1
6	Standard Version with Ground Line Choke	2 x 0.8	-	100	2.2	1
10	Standard Version with Ground Line Choke	2 x 0.3	-	100	2.2	1
1	Medical Version (M5)	2 x 10	-	100	-	1
2	Medical Version (M5)	2 x 4	-	100	-	1
4	Medical Version (M5)	2 x 1.5	-	100	-	1
6	Medical Version (M5)	2 x 0.8	-	100	-	1
8	Medical Version (M5)	2 x 0.6	-	100	-	1
10	Medical Version (M5)	2 x 0.3	-	100	-	1
1	Medical Version (M80)	2 x 10	-	100	0.47	1

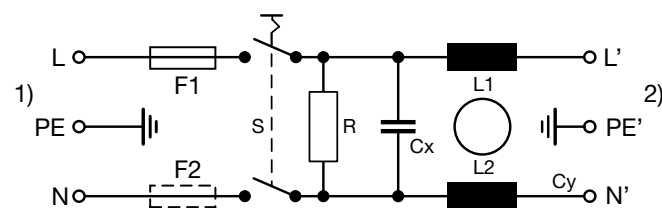
## Diagrams

Standard Version, medical Version M80  
non-illuminated



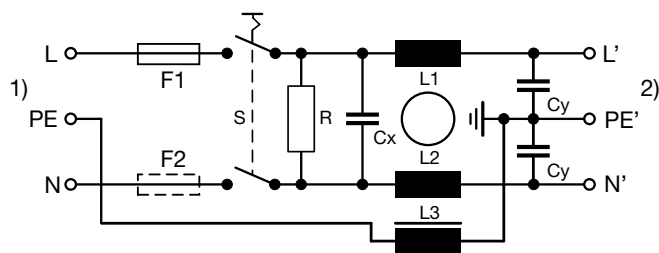
1) Line  
2) Load

Medical version M5  
non-illuminated



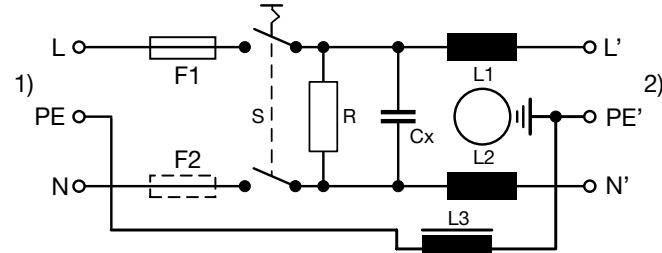
1) Line  
2) Load

Standard Version, medical Version M80  
with PE-choke



1) Line  
2) Load

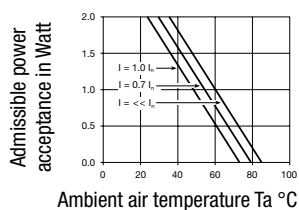
Medical version M5  
with PE-choke



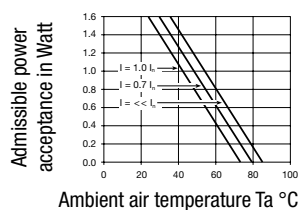
1) Line  
2) Load

## Derating Curves

1-pole

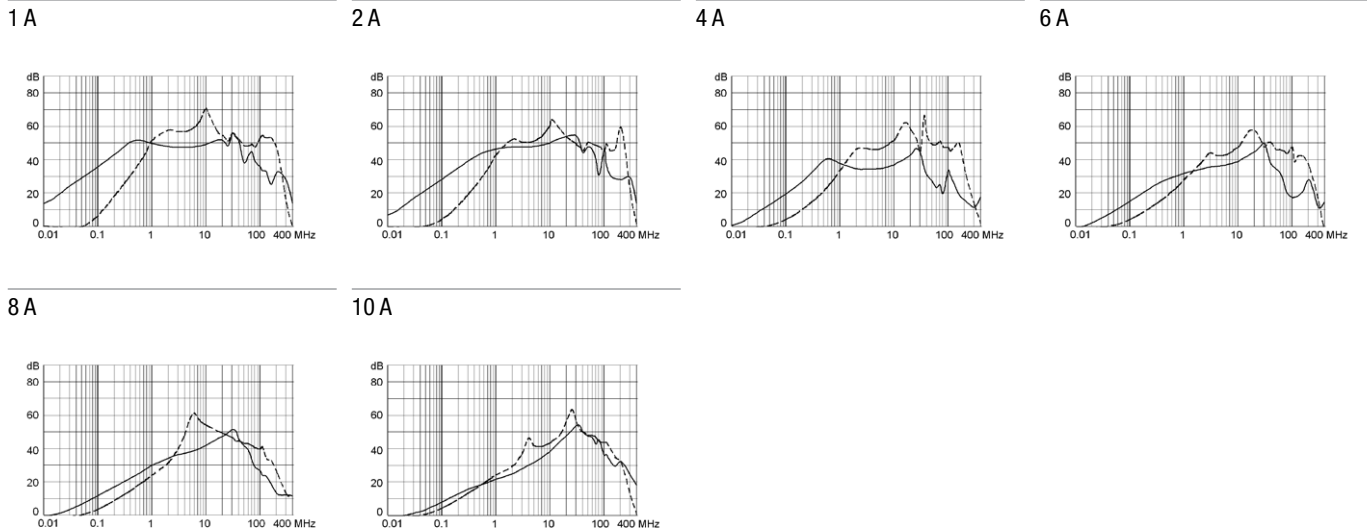


2-pole

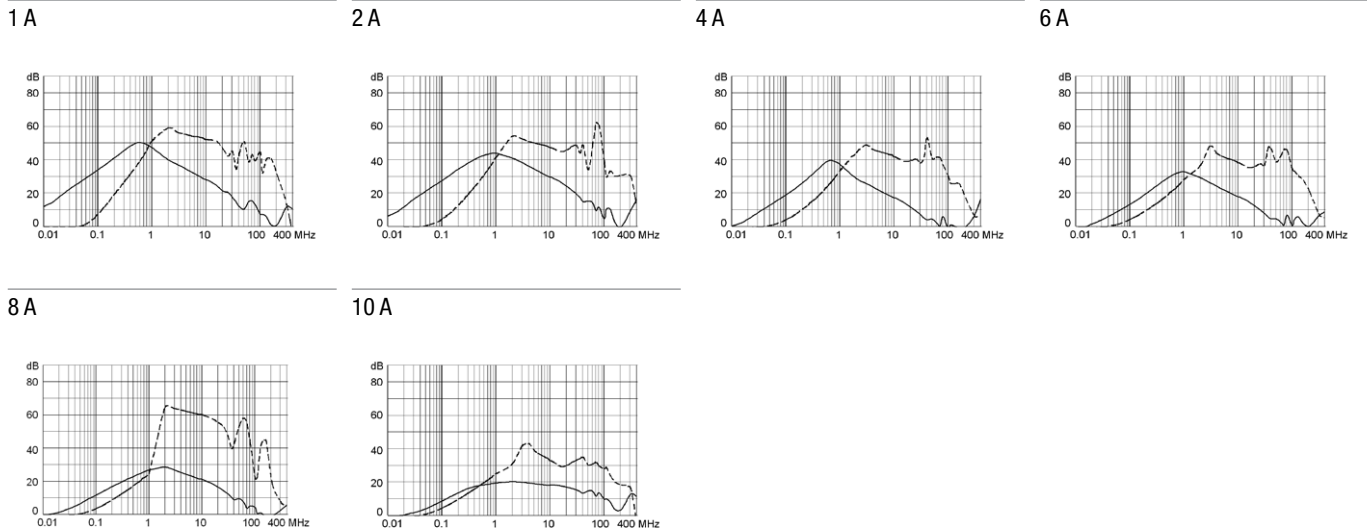


Attenuation Loss

Standard version



Medical version (M5)



All Variants

Rated Current [A]	Filter-Type	Mounting	Fuseholder	Line Switch	Illumination	Color	Order Number
1	Standard Version	Screw-on A	1-pole	2-pole	non-illuminated	black	<a href="#">DD12.1111.111</a>
1	Standard Version	Snap-in	2-pole	2-pole	non-illuminated	black	<a href="#">3-107-465</a>
1	Standard Version	Screw B	2-pole	2-pole	non-illuminated	black	<a href="#">3-109-955</a>
1	Standard Version	Screw-on A	2-pole	2-pole	non-illuminated	black	<a href="#">DD12.1121.111</a>
2	Standard Version	Screw-on A	1-pole	2-pole	non-illuminated	black	<a href="#">DD12.2111.111</a>
2	Standard Version	Snap-in	2-pole	2-pole	non-illuminated	black	<a href="#">3-107-466</a>
2	Standard Version	Screw B	2-pole	2-pole	non-illuminated	black	<a href="#">3-109-956</a>
2	Standard Version	Screw-on A	2-pole	2-pole	non-illuminated	black	<a href="#">DD12.2121.111</a>
2	Standard Version	Screw-on A	2-pole	2-pole	illuminated, red	black	<a href="#">DD12.2123.111</a>
2	Standard Version	Screw-on A	2-pole	2-pole	illuminated, green	black	<a href="#">DD12.2124.111</a>
4	Standard Version	Screw B	1-pole	2-pole	non-illuminated	black	<a href="#">3-110-001</a>
4	Standard Version	Snap-in	1-pole	2-pole	non-illuminated	black	<a href="#">3-110-032</a>
4	Standard Version	Screw-on A	1-pole	2-pole	non-illuminated	black	<a href="#">DD12.4111.111</a>
4	Standard Version	Snap-in	2-pole	2-pole	non-illuminated	black	<a href="#">3-107-467</a>

Rated Current [A]	Filter-Type	Mounting	Fuseholder	Line Switch	Illumination	Color	Order Number
4	Standard Version	Screw B	2-pole	2-pole	non-illuminated	black	3-109-957
4	Standard Version	Screw-on A	2-pole	2-pole	non-illuminated	black	DD12.4121.111
6	Standard Version	Snap-in	1-pole	2-pole	non-illuminated	black	3-110-010
6	Standard Version	Screw B	1-pole	2-pole	non-illuminated	black	3-110-031
6	Standard Version	Screw-on A	1-pole	2-pole	non-illuminated	black	DD12.6111.111
6	Standard Version	Screw B	2-pole	2-pole	non-illuminated	black	3-102-857
6	Standard Version	Snap-in	2-pole	2-pole	non-illuminated	black	3-102-861
6	Standard Version	Screw-on A	2-pole	2-pole	non-illuminated	black	DD12.6121.111
6	Standard Version	Screw-on A	2-pole	2-pole	illuminated red	black	DD12.6123.111
8	Standard Version	Screw-on A	1-pole	2-pole	non-illuminated	black	DD12.8111.111
8	Standard Version	Snap-in	2-pole	2-pole	non-illuminated	black	3-107-468
8	Standard Version	Screw B	2-pole	2-pole	non-illuminated	black	3-109-958
8	Standard Version	Screw-on A	2-pole	2-pole	non-illuminated	black	DD12.8121.111
10	Standard Version	Screw-on A	1-pole	2-pole	non-illuminated	black	DD12.9111.111
10	Standard Version	Screw B	2-pole	2-pole	non-illuminated	black	3-105-315
10	Standard Version	Snap-in	2-pole	2-pole	non-illuminated	black	3-107-469
10	Standard Version	Screw-on A	2-pole	2-pole	non-illuminated	black	DD12.9121.111
6	Standard Version with Ground Line Choke	Screw B	2-pole	2-pole	non-illuminated	black	3-109-943
10	Standard Version with Ground Line Choke	Screw-on A	2-pole	2-pole	non-illuminated	black	3-102-855
1	Medical Version (M5)	Snap-in	2-pole	2-pole	non-illuminated	black	3-107-472
1	Medical Version (M5)	Screw B	2-pole	2-pole	non-illuminated	black	3-109-994
1	Medical Version (M5)	Screw-on A	2-pole	2-pole	non-illuminated	black	DD12.1321.111
2	Medical Version (M5)	Snap-in	2-pole	2-pole	non-illuminated	black	3-107-473
2	Medical Version (M5)	Screw B	2-pole	2-pole	non-illuminated	black	3-109-995
2	Medical Version (M5)	Screw-on A	2-pole	2-pole	non-illuminated	black	DD12.2321.111
4	Medical Version (M5)	Snap-in	2-pole	2-pole	non-illuminated	black	3-107-474
4	Medical Version (M5)	Screw B	2-pole	2-pole	non-illuminated	black	3-109-997
4	Medical Version (M5)	Screw-on A	2-pole	2-pole	non-illuminated	black	DD12.4321.111
6	Medical Version (M5)	Snap-in	2-pole	2-pole	non-illuminated	black	3-107-475
6	Medical Version (M5)	Screw B	2-pole	2-pole	non-illuminated	black	3-109-998
6	Medical Version (M5)	Screw-on A	2-pole	2-pole	non-illuminated	black	DD12.6321.111
8	Medical Version (M5)	Snap-in	2-pole	2-pole	non-illuminated	black	3-107-476
8	Medical Version (M5)	Screw B	2-pole	2-pole	non-illuminated	black	3-109-999
8	Medical Version (M5)	Screw-on A	2-pole	2-pole	non-illuminated	black	DD12.8321.111
10	Medical Version (M5)	Snap-in	2-pole	2-pole	non-illuminated	black	3-107-477
10	Medical Version (M5)	Screw B	2-pole	2-pole	non-illuminated	black	3-110-000
10	Medical Version (M5)	Screw-on A	2-pole	2-pole	non-illuminated	black	DD12.9321.111
1	Medical Version (M80)	Screw-on A	2-pole	2-pole	non-illuminated	black	DD12.1621.111


Most Popular.

Availability for all products can be searched real-time: <https://www.schurter.com/en/Stock-Check/Stock-Check-SCHURTER>




10 A version only IEC approval.

**Packaging unit** 10 Pcs



Required Accessory

	Description	
	<a href="#">Fusedrawer 2</a> Fusedrawer für Fuse Links 5x20 mm, with or without Voltage Selector Insert	
	Fingergrip, 2-pole	4301.1401
	Extra-Safe, 2-pole	4301.1403
	Fingergrip, 1-pole	4301.1405
	Extra-Safe, 1-pole	4301.1407
		...

Accessories

	<a href="#">Wire Harness</a> Wire harness for SCHURTER products	
	<a href="#">Assorted Covers</a> Rear Cover	
	0859.0076	
	<a href="#">Cord retaining kits</a> Cord retaining strain relief	
	Flat head, A	4700.0001

Mating Outlets/Connectors

Category / Description		
	<a href="#">Appliance Outlet Overview complete</a>	
	4787, Mounting: Screw-on mounting, Appliance Outlet: IEC Solder terminals, 10 A, Suitable for appliances with protection class I	4787
	4788, Mounting: Snap-in version, Appliance Outlet: IEC Solder terminals or quick connect terminals, 10 A, Suitable for appliances with protection class I	4788
	IEC Appliance Outlet F or H, Screw-on Mounting, Front Side, Solder, PCB or Quick-connect Terminal	5091
	<a href="#">Appliance Outlet further types to DD12</a>	
	<a href="#">Connector Overview complete</a>	
	4022 Mounting: Power Supply Cord, 3 x 1.5 mm², Screw clamps, Connector: IEC C13	4022
	4782 Mounting: Power Cord, 3 x 1 mm² / 3 x 18 AWG, Cable, Connector: IEC C13	4782
	4012 Mounting: Power Supply Cord, 3 x 1 mm², Screw clamps, Connector: IEC C13	4012
	4785 Mounting: Power Cord, 3 x 1 mm² / 3 x 18 AWG, Cable, Connector: IEC C13	4785
	4300-06 Mounting: Power Cord, 3 x 1 mm² / 3 x 18 AWG, Cable, Connector: IEC C13	4300-06
<a href="#">Connector further types to DD12</a>		...



## Mating Outlets/Connectors shuttered



[Power Cord Overview complete](#)

VAC13KS, Overview, V-Lock cord retaining, diverse Connector IEC C13, diverse, black

VAC13KS

[Power Cord further types to DD12](#)